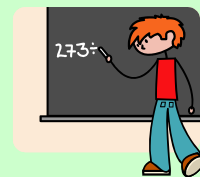


# 2003 National Survey of Children's Health

---

CHILD HEALTH & HEALTH CARE MEASURES

SPSS CODEBOOK



*Version 1.2, updated December 2008*



# Table of Contents

---



|  |    |
|--|----|
| Purpose of the 2003 NSCH SPSS Codebook .....   | 1  |
| The Data Resource Center for Child and Adolescent Health .....                                   | 1  |
| Overview of the 2003 NSCH.....   | 1  |
| Important Information Regarding the 2003 NSCH Data .....   | 2  |
| Recommended Citation.....  | 4  |
| References.....  | 4  |
| <i>Physical and Dental Health</i> .....  | 5  |
| 1.1 Child Health Status .....  | 5  |
| 1.2 Healthy Teeth .....  | 6  |
| 1.3 Breastfed Ever .....   | 7  |
| 1.4 BMI-for-Age .....  | 8  |
| 1.5 Physical Activity .....  | 9  |
| 1.6 Lost School Days.....  | 10 |
| 1.7 Childhood Injuries.....  | 11 |
| 1.8 Accidental Poisoning .....   | 12 |
| 1.9 Moderate or Severe Health Conditions (In Development).....                                   | 13 |
| 1.10 Impact of Asthma of Child: asthma-related health issues during the past 12 months .....     | 14 |
| 1.10a Impact of Asthma on Child: no asthma-related health issues during the past 12 months ..... | 15 |
| 1.11 Impact of Asthma on Family .....  | 16 |
| 1.12 Hospitalization for Asthma.....   | 17 |
| <i>Emotional and Mental Health</i> .....   | 18 |
| 2.1 Parent-Reported Concerns.....  | 18 |

Table of Contents

2.2 At Risk for Developmental Delay (In Development) ..... 19

2.3 Socio-Emotional Difficulties ..... 20

2.4 Impact of Children’s Socio-Emotional Difficulties on Family ..... 21

2.5 Social Competence (In Development)..... 22

2.6 Problematic Behaviors..... 23

2.7 Medication for ADD/ADHD ..... 24

2.8 Autism Ever ..... 25

*Health Insurance Coverage ..... 26*

3.1 Currently Insured ..... 26

3.2 Consistent Health Insurance Coverage..... 27

3.3 Insurance Type ..... 28

*Preventive Medical Care ..... 29*

4.1 Preventive Medical Care ..... 29

4.2 Getting Needed Preventive Dental Care ..... 30

4.3 Medical and Dental Preventive Care ..... 31

4.4 Emergency Room Visits ..... 32

4.5 Getting Needed Mental Health Care ..... 33

4.6 Getting Needed Medical Care ..... 34

4.7 Getting Needed Prescription Medication ..... 35

4.8 Medical Home ..... 36

4.9 Personal Doctor or Nurse (PDN) ..... 41

4.10 Communication with PDN..... 42

4.11 Getting Needed Care from PDN..... 43

4.12 Access to Specialty Care or Services..... 44

4.13 Care Coordination from PDN..... 45

4.14 Doctor Asks About Concerns ..... 46

|   |   |           |
|---|---|-----------|
| 4.15  | Getting Needed Information .....              | 47        |
| <i>Community and School Activities.....</i> |   | <i>48</i> |
| 5.1   | Early Childhood School .....                  | 48        |
| 5.2   | Repeating Grades in School.....               | 49        |
| 5.3   | Activities Outside of School .....            | 50        |
| 5.4   | Volunteer Activities .....                    | 51        |
| 5.5   | Work for Pay .....                            | 52        |
| 5.6   | Reading for Pleasure .....                    | 53        |
| 5.7   | Religious Service Attendance.....             | 54        |
| <i>Family Health and Activities .....</i>   |   | <i>55</i> |
| 6.1   | Maternal Physical Health Status.....          | 55        |
| 6.2   | Maternal Mental Health Status .....           | 56        |
| 6.3   | Overall Maternal Health Status.....           | 57        |
| 6.4   | Household Smoking.....                        | 58        |
| 6.5   | Working Poor Households.....                  | 59        |
| 6.6   | Outings with Family .....                     | 60        |
| 6.7   | Reading to Young Children .....               | 61        |
| 6.8   | Shared Meals.....                             | 62        |
| 6.9   | Adequate Sleep .....                          | 63        |
| 6.10  | TV Watching .....                             | 64        |
| 6.11  | Staying Home Alone .....                      | 65        |
| 6.12  | Parental Aggravation with Child .....         | 66        |
| 6.13  | Last-Minute Child Care Changes .....          | 67        |
| 6.14  | Impact of Child Care on Family Work Life..... | 68        |
| 6.15  | Child Care Issues .....                       | 69        |
| 6.16  | Non-Parental Child Care .....                 | 70        |

Table of Contents

*Neighborhood Safety and Support*..... 71

7.1 Supportive Neighborhoods ..... 71

7.2 Safe Neighborhoods..... 72

7.3 Safe Schools..... 73

*Stratifiers* ..... 74

Gender..... 74

Age Group (3)..... 75

Age Group (5)..... 76

Race and Ethnicity..... 77

Special Health Care Needs Status..... 78

Family Structure ..... 81

Household Income..... 82

Insurance Type..... 83

Insurance Status..... 84

*Appendix A: Unweighted Frequency Tables*.....A-1

*Appendix B: Medical Home Component and Interim Variables*.....B-1

## **Acknowledgements**

This publication represents the work of the Child and Adolescent Health Measurement Initiative (CAHMI), in collaboration with Health Systems Research, Inc., an Altarum Company (HSR). The CAHMI would like to extend a special thank you to the Federal Maternal and Child Health Bureau for their support of the Data Resource Center for Child and Adolescent Health (DRC) and for the availability of the national and state-level survey data upon which the indicator code set forth in this document is based.

We also recognize the National Center for Health Statistics (NCHS) SLAITS team who led the data collection and development of the initial code for many DRC indicators. The indicators outlined here represent the intellectual leadership of many DRC advisors and experts nationally and in states. In addition, those researchers whom the CAHMI worked with to assist in replicating the code used to develop the DRC indicators in their own research have been very helpful to us in formulating indicator methods and the development of this codebook.

Special thanks to Kathy Newton and Debra Read of the CAHMI and Stacy Gleason and Holly Doggett of HSR for their effort in producing of this codebook, and to Stephen Blumberg, PhD, and his colleagues at the NCHS for their continued collaboration in making sure the code is right!





## Purpose of the 2003 NSCH SPSS Codebook

---



This codebook contains SPSS program statements that can be applied to the public use data file for the 2003 National Survey of Children's Health (NSCH) to create the Key Child Health Indicators and variables used to stratify these items in the interactive data query feature of the National Data Resource Center for Child and Adolescent Health (DRC), located online at [www.childhealthdata.org](http://www.childhealthdata.org).

The codebook is designed as a resource for researchers and analysts who are interested in understanding and replicating the Key Child Health Indicator variables developed from the 2003 NSCH for the National Data Resource Center for Child and Adolescent Health (DRC). Its purpose is to expedite research by helping to standardize and improve the comparability of information derived from the 2003 NSCH.

The DRC maintains a complete 2003 NSCH indicator data set, available in either SAS or SPSS format. The data set includes all 65 Key Child Health Indicators, indicators pertinent to Healthy People 2010 goals, and demographic and individual question variables. To request a copy, contact the Child and Adolescent Health Measurement Initiative (CAHMI) at [cahmi@ohsu.edu](mailto:cahmi@ohsu.edu).

## The Data Resource Center for Child and Adolescent Health

---

The Data Resource Center for Child and Adolescent Health (DRC) is an easy-to-use public Web site that eliminates barriers and reduces time and resources needed to obtain key findings on the health and health care of children, youth and families in the United States. The DRC is sponsored by the Maternal and Child Health Bureau and is led by The Child and Adolescent Health Measurement Initiative (CAHMI) based at the Oregon Health and Science University in Portland, Oregon. It is located online at [www.childhealthdata.org/](http://www.childhealthdata.org/).

The main feature of the DRC is an interactive data search tool that includes over 100 standardized indicators from the two extensive national- and state-based surveys on the health and health care of children, youth and families: the *2001 National Survey of Children with Special Health Care Needs* (NS-CSHCN), and the *2003 National Survey of Children's Health* (NSCH). Data search results can be stratified by the age, race/ethnicity, income and other pertinent characteristics of children and youth nationally or for individual states. Links to the survey instruments, sampling diagrams, methods reports and other survey specific resources are included on the DRC Web site.

## Overview of the 2003 NSCH

---

The 2003 National Survey of Children's Health is a national telephone survey conducted during 2003–2004 by the Centers for Disease Control and Prevention, National Center for Health Statistics, and sponsored by the U.S. Department of Health and Human Services Administration, Maternal and Child

Health Bureau. The survey is designed to (1) estimate national and state-level prevalence for a variety of child health indicators, (2) generate information about children, families, and neighborhoods to help guide policymakers, advocates, and researchers, (3) provide baseline estimates for federal and state performance measures, Healthy People 2010 objectives and states' needs assessments, and (4) complement the National Survey of Children with Special Health Care Needs (NS-CSHCN).

The NSCH provides a broad range of information about children's health and well-being collected in a manner that allows comparisons among states as well as nationally. A total of 102,353 surveys completed nationally by parents/caregivers of children and youth ages 0–17 years — between 1,483 and 2,241 surveys per state — were collected. Survey results are weighted to represent the population of non-institutionalized children and youth ages 0–17 years in each state. Topics include demographics, physical and mental health status, health insurance, access and use of health care services, medical home, early childhood-specific information (0–5 years), middle childhood- and adolescent-specific information (6–17 years), family health and activities, parental health status and perceptions of neighborhood characteristics.

The public use data file for the 2003 NSCH, along with relevant background information and documentation can be obtained online at [www.cdc.gov/nchs/about/major/slaits/nsch.htm](http://www.cdc.gov/nchs/about/major/slaits/nsch.htm). Additional information and results from the NSCH are available in the DRC at [www.childhealthdata.org](http://www.childhealthdata.org).

## Important Information Regarding the 2003 NSCH Data

---

### *Weighting*

Each record in the 2003 NSCH public release data set is assigned a sampling weight, which is composed of a base sampling weight and a post-stratification adjustment to match the child population in each state. The base sampling weight adjusts for number of residential telephone lines and sources of non-response. The interview response weights are further adjusted to match the age, race/ethnicity and gender distributions in the child population for each state based on July 2003 Census Bureau estimates. The post-stratification procedure also adjusts for the number of households without telephones in each state. The variable WEIGHT\_I, included in the public use data file, weights the survey responses to reflect the non-institutionalized population of children and youth ages 0–17 in each state.

### *Variance Estimation*

Use of statistical software with the capacity to take into account the complex sampling design of the survey is necessary to appropriately calculate the variances and associated standard errors and confidence intervals required for accurate statistical hypothesis testing. Computer programs capable of variance estimation for complex sample designs include SUDAAN, SAS V 9.0+, STATA, WesVar, and SPSS Complex Samples.

The NSCH is designed to provide independent data sets for each of the 50 states and the District of Columbia. Subsetting the survey data to a particular state does not compromise the design structure of the survey. However, subsetting further to a specific population subgroup (age group, ethnicity or race, or

poverty level, for example) within or across states will lead to incorrect standard error estimation. Most software packages that analyze complex sample data will incorrectly compute variances for subsetted data when the sample design is compromised because complete design information is not available. To avoid this problem, use a subpopulation procedure such as SUDAAN's SUBPOPN option that allows for the targeting of specific subpopulations for analysis while retaining the full sample design information.

The only substate geographic information included in the NSCH public use data set is a variable for Metropolitan Statistical Area (MSA) status. The MSA status information is available for the 35 states in which the population is at least 500,000 in both categories (MSA and non-MSA). Zip code data is collected with the NSCH; however, this information is not released in the public use data set due to confidentiality restrictions. The confidential zip code data can be made available to researchers for on site analysis at the Data Research Center of the National Center for Health Statistics (NCHS) in Hyattsville, MD. The process requires submitting a proposal to the NCHS. For more information, see [www.cdc.gov/nchs/r&d/rdc.htm](http://www.cdc.gov/nchs/r&d/rdc.htm).

### ***Interpretation of Results***

The respondents to the NSCH survey are parents; however, the results are weighted to reflect the population of children and youth ages 0–17, not parents or families. Thus, results are reported in terms of children/youth, even if the question refers to the parents or family. For example, when reporting on maternal health status it is correct to say: "...percentage of children whose mothers are in excellent or very good health," NOT "...percentage of mothers who are in excellent or very good health...."

The condition-specific information in this survey is based on parent report, not clinical diagnosis. Height and weight information used to calculate the Body Mass Index (BMI)-for-age indicator is also derived from parent report, not biometric measurement.

Pay careful attention to the valid denominator of responders to specific questions when interpreting results for this survey. Although most of the questions were asked for all children ages 0–17, two sections of the survey targeted specific age groups: early childhood (ages 0–5) and middle childhood and adolescence (ages 6–17). In several parts of the survey, follow-up questions are asked only if parents gave a specific response to an earlier question.

### ***Treatment of Unknown/Missing Values***

Responses of "Don't know" or "Refused" and system missing data are not included in the denominators used in the construction of the variables in this codebook. In nearly all cases, the unknown values make up less than 1 percent of the responses to any single question. However, a few questions have higher proportions of unknown values, most notably Household Income (about 10 percent unknown values nationally), and BMI-for-age (6.5 percent nationally).

### ***Verification***

Unweighted frequency distributions for all of the variables in this codebook are located in Appendix A as a resource for cross checking results. Results may also be compared with results from the interactive data query in the DRC.

### ***Additional Information on Survey Design and Methodology***

The NCHS report, *Design and Operation of the National Survey of Children's Health, 2003 (2)* is an excellent resource. This document includes detailed descriptions of questionnaire development, sample selection and weighting procedures, events that affected data collection, adjustments made to protect data confidentiality, and more. View or download the methods report from the DRC Web site for the NSCH at [www.nschdata.org/content/LearnAboutTheSurvey.aspx](http://www.nschdata.org/content/LearnAboutTheSurvey.aspx) or the NSCH Web Site at [www.cdc.gov/nchs/data/slaits/NSCH\\_Methodology\\_Report.pdf](http://www.cdc.gov/nchs/data/slaits/NSCH_Methodology_Report.pdf).

## **Recommended Citation**

---

Publication or presentation of any analysis involving variables constructed using code from this document in any form should be appropriately cited. The following format is recommended:

Child and Adolescent Health Measurement Initiative (CAHMI), *2003 National Survey of Children's Health SPSS Codebook*, National Data Resource Center on Child and Adolescent Health, [www.childhealthdata.org](http://www.childhealthdata.org).

## **References**

---

1. Child and Adolescent Health Measurement Initiative (CAHMI), "The Children with Special Health Care Needs (CSHCN) Screener." 2002, [www.ohsdoernbecher.com/CAHMI/CSHCN-screener.pdf](http://www.ohsdoernbecher.com/CAHMI/CSHCN-screener.pdf).
2. Blumberg SJ, Olson L, Frankel MR, Osborn L, Srinath KP, Giambo P. "Design and operation of the National Survey of Children's Health, 2003." National Center for Health Statistics. *Vital Health Stat* 1(43). 2005.
3. U.S. Department of Health and Human Services, Health Resources and Services Administration, Maternal and Child Health Bureau. "The National Survey of Children's Health 2003." Rockville, Maryland: U.S. Department of Health and Human Services, 2005.
4. Department of Health and Human Services, Centers for Disease Control and Prevention, National Center for Health Statistics, Division of Health Interview Statistics, Special Population Surveys Branch. "Progress toward implementing community-based systems of services for children with special health care needs: Summary tables from the National Survey of Children with Special Health Care Needs, 2001." April 2003.

| <b>INDICATOR 1.1</b>   |  | <b>In general, how would you describe (child's name)'s health?</b> |
|--|--|--|
| <b>Survey Items Used</b>   | S2Q01  |  |
| <b>Numerators</b>  | <ul style="list-style-type: none"> <li>• Children whose health status is excellent or very good</li> <li>• Children whose health status is good</li> <li>• Children whose health status is fair or poor</li> </ul> |  |
| <b>Denominator</b>   | Children ages 0–17 years   |  |
| <b>Description</b>   | Percent of children ages 0–17 whose health status is excellent/very good, good, or fair/poor, as reported by their parents.  |  |
| <b>Notes for Data-Users</b>  |  |  |
| <br>   |  |  |
| <b>SPSS Code and Annotation</b>  |  |  |
| <pre> RECODE   S2Q01   (3=2) (1 thru 2=1) (4 thru 5=3) (ELSE=Copy) INTO ind1_1 . VARIABLE LABELS ind1_1 "Indicator 1.1: In general, how would you describe (child's name)'s health?". VALUE LABELS ind1_1 1 "Excellent/very good" 2 "Good" 3 "Fair/poor" 6 "Don't know" 7 "Refused". MISSING VALUES ind1_1 (6,7). FORMATS ind1_1 (f4.0) . EXECUTE . </pre> |  |  |

| <b>INDICATOR 1.2</b>  |  | <b>How would you describe the condition of (child's name)'s teeth?</b> |
|---|--|--|
| <b>Survey Items Used</b>  | S2Q54  |  |
| <b>Numerators</b>   | <ul style="list-style-type: none"> <li>• Children/youth whose teeth are in excellent or very good condition</li> <li>• Children/youth whose health status are in good condition</li> <li>• Children/youth whose health status are in fair or poor condition</li> </ul> |  |
| <b>Denominator</b>  | Children/youth ages 1–17 years who have one or more natural teeth  |  |
| <b>Description</b>  | Percent of children/youth ages 1–17 whose teeth are in excellent/very good condition, good condition, or fair/poor condition, as reported by their parents.  |  |
| <b>Notes for Data-Users</b>   |  |  |
| Children under 1 and children/youth who did not have natural teeth at the time of the survey (S2Q54 = has no natural teeth) were not included in any of the indicators addressing dental care.  |  |  |
| <b>SPSS Code and Annotation</b>   |  |  |
| <pre> RECODE   S2Q54   (3=2) (1 thru 2=1) (4 thru 5=3) (ELSE=Copy) INTO ind1_2 . VARIABLE LABELS ind1_2 "Indicator 1.2: How would you describe the condition of (child's name)'s teeth?". VALUE LABELS ind1_2 1 "Excellent/very good condition" 2 "Good condition" 3 "Fair/poor condition"   6 "Child has no natural teeth" 96 "Don't know" 97 "Refused". MISSING VALUES ind1_2 (6,96,97). FORMATS ind1_2 (f4.0) . EXECUTE . </pre> |  |  |

| <b>INDICATOR 1.3</b>   |  | <b>Was (child's name) ever breastfed or fed breast milk?</b> |
|--|--|--|
| <b>Survey Items Used</b>   | S6Q59  |  |
| <b>Numerator</b>   | Young children who were breastfed or fed breast milk for any length of time            |  |
| <b>Denominator</b>   | Children ages 0–5 years  |  |
| <b>Description</b>   | Percent of children ages 0–5 who were ever breastfed or fed breast milk (S6Q59 = Yes). |  |
| <b>Notes for Data-Users</b>  |  |  |
|  |  |  |
| <b>SPSS Code and Annotation</b>  |  |  |
| <p>COMPUTE ind1_3 = S6Q59.</p> <p>VARIABLE LABELS ind1_3 "Indicator 1.3: Was (child's name) ever breastfed or fed breast milk?".</p> <p>VALUE LABELS ind1_3 0 'No' 1 'Yes' 6 "Don't know" 7 "Refused".</p> <p>MISSING VALUES ind1_3 (6,7).</p> <p>FORMATS ind1_3 (f4.0) .</p> <p>EXE .</p> |  |  |

| <b>INDICATOR 1.4</b>  |   | <b>What is the weight status of children/youth based on Body Mass Index-for-Age (BMI-for-age)?</b> |
|---|---|--|
| <b>Survey Items Used</b>  | S2Q02, S2Q03, AGEYR_CHILD   |  |
| <b>Numerators</b>   | <ul style="list-style-type: none"> <li>• Children/youth who are overweight</li> <li>• Children/youth who are at risk of being overweight</li> <li>• Children/youth who are normal weight</li> <li>• Children/youth who are underweight</li> </ul> |  |
| <b>Denominator</b>  | Children/youth ages 10–17 years   |  |
| <b>Description</b>  | Percent of children/youth ages 10–17 who are overweight, at risk of overweight, normal weight, or underweight according to BMI-for-age calculated from parent report of child's height and weight.  |  |
| <b>Notes for Data-Users</b>   |   |  |
| <p>BMI-for-age calculated from the NSCH 2003 is based on parent-reported height and weight of children. Calculation of BMI-for-age is usually based on the age of the child in months. Because age was only reported in years for this survey, children were assumed to be at the midpoint of the age-year for purposes of calculating BMI-for-age. It should be recognized that height and weight were based on the parents' reports and were not independently measured. Height and weight estimates based on parent reporting from the NSCH 2003 were compared to national estimates based on independent measurement from the National Health and Nutrition Examination Survey. This comparison revealed that, for children under 10 years of age, height was generally underreported and weight was generally overreported. Therefore, BMI for children under 10 years of age has not been included as part of this indicator. For more information about BMI-for-age, go to: <a href="http://www.cdc.gov/nccdphp/dnpa/bmi/bmi-for-age.htm">www.cdc.gov/nccdphp/dnpa/bmi/bmi-for-age.htm</a></p> <p>The number of unknown values for this variable is unusually high (6.5%). Unknown values are not included in the denominator; weighted population counts may be underestimated.</p> |   |  |
| <b>SPSS Code and Annotation</b>   |   |  |
| <pre>DO IF ageyr_child &gt;= 10. RECODE   BMICLASS (else=copy) INTO ind1_4. END IF.  VAR LAB ind1_4 "Indicator 1.4: What is the weight status of children/youth ages 10-17 based on Body Mass Index for age (BMI-for-age)? (derived)". VAL LAB ind1_4 1 'Underweight' 2 'Normal Weight' 3 'At Risk for Overweight' 4 'Overweight'. FORMATS ind1_4 f(4.0) . EXE.</pre>   |   |  |



|  |   |
|--|---|
| <b>INDICATOR 1.5</b>   | <b>During the past week, on how many days did (child's name) exercise or participate in physical activity for at least 20 minutes that made him/her sweat and breathe hard?</b>   |
| <b>Survey Items Used</b>   | S7Q21   |
| <b>Numerators</b>  | <ul style="list-style-type: none"> <li>• Children/youth who exercised on no days during the past week</li> <li>• Children/youth who exercised on 1–3 days during the past week</li> <li>• Children/youth who exercised on 4–6 days during the past week</li> <li>• Children/youth who exercised every day during the past week</li> </ul> |
| <b>Denominator</b>   | Children/youth ages 6–17 years  |
| <b>Description</b>   | Percent of children/youth ages 6–17 who did not engage in vigorous physical activity or who engaged in vigorous physical activity for 20 minutes or more on 1–3 days, 4–6 days, or every day of the past week   |
| <b>Notes for Data-Users</b>  |   |
| <b>SPSS Code and Annotation</b>  |   |
| <p>RECODE s7q21 (0=0) (1 thru 3=1) (4 thru 6=2) (7=3) (else=copy) into ind1_5.<br/> VAR LAB ind1_5 "Indicator 1.5: During the past week, on how many days did (child's name) exercise or" +<br/> " participate in physical activity for at least 20 minutes that made him/her sweat and breathe hard?" +<br/> " (S7Q21 -- ages 6-17 only)".<br/> VAL LAB ind1_5 0 '0 days' 1 '1 - 3 days' 2 '4 - 6 days' 3 'Every day' 96 'DK' 97 'Refused'.<br/> MISSING VALUES ind1_5 (96,97).<br/> FORMATS ind1_5 (f4.0).<br/> EXE.</p> |   |

| <b>INDICATOR 1.6</b>   |   | <b>During the past 12 months, about how many days did (child's name) miss school because of illness or injury?</b> |
|--|---|--|
| <b>Survey Items Used</b>   | S7Q02   |  |
| <b>Numerators</b>  | <ul style="list-style-type: none"> <li>• Children/youth who missed no school days due to illness/injury</li> <li>• Children/youth who missed 1–5 school days due to illness/injury</li> <li>• Children/youth who missed 6–10 school days due to illness/injury</li> <li>• Children/youth who missed 11 or more school days due to illness/injury</li> </ul> |  |
| <b>Denominator</b>   | Children/youth ages 6–17 years  |  |
| <b>Description</b>   | Percent of children/youth ages 6–17 who did not miss school, or who missed school 1–5 days, 6–10 days, or 11 or more days because of illness or injury.   |  |
| <b>Notes for Data-Users</b>  |   |  |
| <b>SPSS Code and Annotation</b>  |   |  |
| <pre> RECODE S7Q02R   (0=0) (1 thru 5=1) (6 thru 10=2) (11 thru 240 = 3) (ELSE=Copy) INTO ind1_6 .  VARIABLE LABELS ind1_6 "Indicator 1.6: During the past 12 months, about how many days did (child's name) miss school because of illness or injury?". VALUE LABELS ind1_6 0 'None' 1 '1 - 5 days' 2 '6 - 10 days' 3 '11 or more days'   994 'home schooled' 995 'did not go to school' 996 "Don't know" 997 "Refused". MISSING VALUES ind1_6 (994 thru 997). FORMATS ind1_6 (f4.0) . EXECUTE . </pre> |   |  |

|  |  |
|--|--|
| <b>INDICATOR 1.7</b>   | <b>During the past 12 months, has (child's name) been injured and required medical attention?</b>                          |
| <b>Survey Items Used</b>   | S6Q55  |
| <b>Numerator</b>   | Young children who experienced injuries requiring medical attention during the past 12 months                              |
| <b>Denominator</b>   | Children ages 0–5 years  |
| <b>Description</b>   | Percent of children ages 0–5 who experienced injuries requiring medical attention during the past 12 months (S6Q55 = Yes). |
| <b>Notes for Data-Users</b>  |  |
| <b>SPSS Code and Annotation</b>  |  |
| <pre> RECODE S6Q55   (ELSE=Copy) INTO ind1_7 .  VAR LAB ind1_7 "Indicator 1.7: During the past 12 months, has (child's name) been injured"+ " and required medical attention? (ages 0-5 only)". VAL LAB ind1_7 0 'Not injured' 1 'Injured in past 12 months' 6 'DK' 7 'Refused'. MISSING VALUES ind1_7 (6,7). FORMATS ind1_7 (f4.0). EXE. </pre> |  |

|   |   |
|---|---|
| <b>INDICATOR 1.8</b>  | <b>During the past 12 months, has (child's name) been poisoned by accident and required medical attention?</b>                  |
| <b>Survey Items Used</b>  | S6Q57   |
| <b>Numerator</b>  | Young children who required medical attention for accidental poisoning during past 12 months                                    |
| <b>Denominator</b>  | Children ages 0–5 years   |
| <b>Description</b>  | Percent of children ages 0–5 who were accidentally poisoned and required medical attention during past 12 months (S6Q57 = Yes). |
| <b>Notes for Data-Users</b>   |   |
| <b>SPSS Code and Annotation</b>   |   |
| <pre> RECODE   S6Q57   (ELSE=Copy) INTO ind1_8 . VAR LAB ind1_8 "Indicator 1.8: During the past 12 months, has (child's name) been poisoned"+ " by accident and required medical attention? (S6Q57 -- ages 0-5; national level data only)". VAL LAB ind1_8 0 'No' 1 'Yes' 6 'DK' 7 'Refused'. MISSING VALUES ind1_8 (6,7). FORMATS ind1_8 (f4.0). EXE. </pre> |   |

| <b>INDICATOR 1.9</b>  |  |
|---|--|
| <b>How many children/youth currently have health conditions described as moderate or severe by their parents?</b>   |  |
| <b>Survey Items Used</b>  | S2Q04 – S2Q17; S2Q20 – S2Q42; S2Q47, S2Q49 – S2Q50   |
| <b>Numerator</b>  | Children/youth with current health conditions rated by their parents as being moderate or severe   |
| <b>Denominator</b>  | Children/youth ages 0–17 years   |
| <b>Description</b>  | Percent of children/youth ages 0–17 whose parents report that the child has specified ongoing health condition(s) (CYSHCN and “yes” on one or more of S2Q20 – S2Q42 or S2Q49) that the parents rate as moderate or severe (S2Q47). |
| <b>Notes for Data-Users</b>   |  |
| <p>For a child to qualify as having a “current health condition,” the child’s parent must report having ever been told by a doctor or health professional that the child has one or more conditions listed in questions S2Q20 – S2Q42 or S2Q49, AND the child must have a positive screen on the CSHCN Screener which indicates that he/she currently experiences on-going health consequences from a medical, emotional, developmental, or behavioral condition lasting 12 months or longer.</p> <p>Only children whose parents report having ever been told that the child has one or more of the conditions asked about in questions S2Q20 – S2Q42 or S2Q49 are asked to rate the severity of the health conditions on these lists that the child may either have now or have had in the past. Parents of children who currently have health conditions that are not listed in questions S2Q20 – S2Q42 or S2Q49 were not given the opportunity to rate the severity of their children’s health problems.</p> |  |
| <b>SPSS Code and Annotation</b>   |  |
|   |  |

|  |  |  |
|--|--|--|
| <b>INDICATOR 1.10</b>  |  | <b>How many children/youth experienced one or more asthma-related health issues during the past 12 months?</b> |
| <b>Survey Items Used</b>   | S2Q49, S2Q50, S2Q52 – S2Q53  |  |
| <b>Numerator</b>   | Children/youth who still have asthma and also experienced one or more asthma-related health issues during the past 12 months                                       |  |
| <b>Denominator</b>   | Children/youth ages 0–17 years   |  |
| <b>Description</b>   | Percent of children/youth ages 0–17 whose parents report that the child still has asthma and has been affected by asthma-related issues during the past 12 months. |  |
| <b>Notes for Data-Users</b>  |  |  |
| <p>“Children with asthma-related health issues” are those whose parents were told at some point in time by a doctor that the child had asthma (S2Q19 = Yes). In order to qualify as being affected by asthma during the past year, children needed to still have asthma at the time of the survey (S2Q49 = Yes) AND experience one or more of the following asthma-related health issues during the past 12 months: use of asthma medication (S2Q52, response indicates use of medication within the past year), significant health difficulties due to asthma (S2Q50 = Moderate or Severe), asthma attacks (S2Q52A = Yes), or hospitalization for asthma (S2Q53 = Yes).</p> |  |  |
| <b>SPSS Code and Annotation</b>  |  |  |
| Not currently available (December 2008); for information contact CAHMI staff at <a href="mailto:CAHMI@ohsu.edu">CAHMI@ohsu.edu</a> .   |  |  |

|  |   |
|--|---|
| <b>INDICATOR 1.10a</b>   | <b>How many children/youth currently have asthma and did not experience asthma-related health issues during the past 12 months?</b>                                     |
| <b>Survey Items Used</b>   | S2Q49, S2Q50, S2Q52 – S2Q53   |
| <b>Numerator</b>   | Children/youth who still have asthma have not experienced any significant asthma-related health issues during the past 12 months  |
| <b>Denominator</b>   | Children/youth ages 0–17 years  |
| <b>Description</b>   | Percent of children/youth ages 0–17 whose parents report that the child still has asthma but have not been affected by asthma-related issues during the past 12 months. |
| <b>Notes for Data-Users</b>  |   |
| <p>“Children with asthma-related health issues” are those whose parents were told at some point in time by a doctor that the child had asthma (S2Q19 = Yes). In order to qualify as being affected by asthma during the past year, children needed to still have asthma at the time of the survey (S2Q49 = Yes) AND experience one or more of the following asthma-related health issues during the past 12 months: use of asthma medication (S2Q52, response indicates use of medication within the past year), significant health difficulties due to asthma (S2Q50 = Moderate or Severe), asthma attacks (S2Q52A = Yes), or hospitalization for asthma (S2Q53 = Yes).</p> |   |
| <b>SPSS Code and Annotation</b>  |   |
| <p>Not currently available (December 2008); for information contact CAHMI staff at <a href="mailto:CAHMI@ohsu.edu">CAHMI@ohsu.edu</a>.</p>   |   |

|  |   |
|--|---|
| <b>INDICATOR 1.11</b>  | <b>Overall, would you say (child's name)'s asthma puts a burden on your family a great deal, a medium amount, a little, or not at all?</b>  |
| <b>Survey Items Used</b>   | S2Q51   |
| <b>Numerators</b>  | <ul style="list-style-type: none"> <li>• Children with asthma whose families are affected by it a great deal or medium amount</li> <li>• Children with asthma whose families are affected by it a little or not at all</li> </ul> |
| <b>Denominator</b>   | Children/youth ages 0–17 years whose parents report child still has asthma  |
| <b>Description</b>   | Among children/youth ages 0–17 with asthma, percent whose parents report that the child's asthma affects the family a great deal or medium amount, or that it affects the family a little or not at all.                          |
| <b>Notes for Data-Users</b>  |   |
| <p>The question "Does child still have asthma?" (S2Q49) was only asked for children whose parents reported ever being told that the child had asthma (S2Q19 = Yes). Only those parents who reported the child still has asthma (S2Q49 = Yes) were asked questions about its effects on the child and family.</p>   |   |
| <b>SPSS Code and Annotation</b>  |   |
| <pre> RECODE   S2Q51   (1 thru 2=1) (3 thru 4=2) (else=copy) INTO ind1_11. VAR LAB ind1_11 "Indicator 1.11: Overall, would you say (child's name)'s asthma puts a burden"+ " on your family a great deal, a medium amount, a little, or not at all? (S2Q51 -- only asked for"+ " children who currently have asthma)" . VAL LAB ind1_11 1 'Affects family a great deal or medium amount' 2 'Affects family a little or not at all'   6 'DK' 7 'Refused'. MISSING VALUES ind1_11 (6,7). FORMATS ind1_11 (f4.0). EXE. </pre> |   |



|  |  |
|--|--|
| <b>INDICATOR 1.12</b>  | <b>During the past 12 months, has (child's name) stayed overnight in a hospital because of his/her asthma?</b>   |
| <b>Survey Items Used</b>   | S2Q19, S2Q53   |
| <b>Numerator</b>   | Children/youth who ever had asthma and were hospitalized overnight for asthma during past 12 months  |
| <b>Denominator</b>   | Children/youth ages 0–17 years   |
| <b>Description</b>   | Percent of children/youth ages 0–17 whose parents report that the child has ever had asthma and stayed overnight in a hospital for asthma during the past 12 months. |
| <b>Notes for Data-Users</b>  |  |
| S2Q53 was only asked for children whose parents reported ever being told that the child had asthma (S2Q19 = Yes).  |  |
| <b>SPSS Code and Annotation</b>  |  |
| <pre> DO IF S2Q19=1. RECODE   S2Q53   (else=copy) INTO ind1_12. END IF. EXE. DO IF S2Q19=0 . RECODE   S2Q53   (sysmis=3) INTO ind1_12. END IF. EXE. VAR LAB ind1_12 "Indicator 1.12: During the past 12 months, has (child's name) stayed"+ " overnight in a hospital because of his/her asthma? (derived - national level data only)". VAL LAB ind1_12 0 "Ever had asthma, no hospitalizations" 1 "Ever had asthma, yes hospitalized for asthma" 3 'Do not have asthma' 6 'DK' 7 'Refused'. MISSING VALUES ind1_12 (6,7). FORMATS ind1_12 (f4.0). EXE. </pre> |  |

|   |   |   |
|---|---|---|
| <b>INDICATOR 2.1</b>  |   | <b>How many children have parents with one or more concerns about child's learning, development, or behavior?</b> |
| <b>Survey Items Used</b>  | AGEYR_CHILD; S6Q08; S6Q09 – S6Q27   |   |
| <b>Numerator</b>  | Children whose parents report one or more concerns about child's learning, development, or behavior (S6Q08 = Yes and/or any of S6Q09 – S6Q27 = “a little” or “a lot”)                         |   |
| <b>Denominator</b>  | Children ages 0–5 years   |   |
| <b>Description</b>  | Percent of children ages 0–5 with parents who reported one or more concerns about their learning, development, or behavior (S6Q08 = Yes and/or any of S6Q09 – S6Q27 = “a little” or “a lot”). |   |
| <b>Notes for Data-Users</b>   |   |   |
| <p>Question S6Q08 is asked for all children ages 0–5 years. Age appropriate subsets of questions S6Q09 to S6Q27 are asked for children ages 4 months through 5 years. Items S6Q08 – S6Q27 are from the Parents' Evaluation of Developmental Status (PEDS), a parent-reported screening instrument for identifying young children at risk for developmental delay. The PEDS is a standardized tool designed to identify children at risk for developmental, behavioral, or social delays. For information about the development and scoring of the PEDS, visit <a href="http://www.pedstest.com">http://www.pedstest.com</a> ©2005, Frances Page Glascoe, Parents' Evaluation of Developmental Status — Survey Version. Forepath.org, PO Box 23186, Washington, DC 20026.</p> <p>The NSCH uses the non-clinical version of the PEDS. Researchers interested in analyzing NSCH data collected with the PEDS instrument will need to consult PEDS documentation for scoring instructions at <a href="http://www.pedstest.com">www.pedstest.com</a>. Health care providers interested in using the PEDS to assess or make decisions about the developmental status for individual children, need to use the clinical version of the PEDS instrument, which can be obtained from Ellsworth &amp; Vandermeer Press, LLC.</p> <p>National data for the PEDS are also available from the 2000 National Survey of Early Childhood Health. See <a href="http://www.cdc.gov/nchs/data/slats/NSCH_Methodology_Report.pdf">www.cdc.gov/nchs/data/slats/NSCH_Methodology_Report.pdf</a> for more information.</p> |   |   |
| <b>SPSS Code and Annotation</b>   |   |   |
| <pre>DO IF AGEYR_CHILD&lt;6. COUNT anyconcern2 = S6Q08 S6Q09 S6Q10 S6Q11 S6Q12 S6Q13 S6Q14 S6Q15 S6Q16 S6Q17 S6Q18 S6Q19 S6Q20 S6Q21 S6Q22 S6Q23 S6Q24 S6Q25 S6Q26 S6Q27 (1 thru 2). END IF.  VARIABLE LABELS anyconcern2 '# of concerns across all items' . EXE.  RECODE anyconcern2 (0=0) (1 thru highest=1) INTO ind2_1.  VAR LAB ind2_1 "Indicator 2.1: How many children (ages 0-5) have parents with one or more concerns about child's physical, behavioral or social development? ". VAL LAB ind2_1 0 "No parent-reported concerns" 1 '1 or more parent-reported concerns'. FORMATS ind2_1 (f4.0). EXE.</pre>   |   |   |

| <b>INDICATOR 2.2</b>  |  | <b>How many children are at risk for developmental delay?</b> |
|---|--|---|
| <b>Survey Items Used</b>  | AGEYR_CHILD; S6Q08; S6Q13 – S6Q27  |   |
| <b>Numerator</b>  | Young children with one or more parent-reported concerns indicative of developmental risk  |   |
| <b>Denominator</b>  | Children ages 1–5 years  |   |
| <b>Description</b>  | Percent of children ages 1–5 with one or more parent-reported concerns indicative of developmental risk (S6Q13 – S6Q27, response of “a little” or “a lot” to one or more). |   |
| <b>Notes for Data-Users</b>   |  |   |
| <p>Items S6Q08 – S6Q27 are from the Parents’ Evaluation of Developmental Status (PEDS), a parent-reported screening instrument for identifying young children at risk for developmental delay. The PEDS is a standardized tool designed to identify children at risk for developmental, behavioral, or social delays. For information about the development and scoring of the PEDS, visit <a href="http://www.pedstest.com">http://www.pedstest.com</a>, ©2005, Frances Page Glascoe, Parents’ Evaluation of Developmental Status–Survey Version. Forepath.org, PO Box 23186, Washington, DC 20026.</p> <p>The NSCH uses the non-clinical version of the PEDS. Researchers interested in analyzing NSCH data collected with the PEDS instrument will need to consult PEDS documentation for scoring instructions at <a href="http://www.pedstest.com">www.pedstest.com</a>. Health care providers interested in using the PEDS to assess or make decisions about the developmental status for individual children, need to use the clinical version of the PEDS instrument, which can be obtained from Ellsworth &amp; Vandermeer Press, LLC.</p> <p>National data for the PEDS are also available from the 2000 National Survey of Early Childhood Health. See <a href="http://www.cdc.gov/nchs/data/slaits/NSCH_Methodology_Report.pdf">www.cdc.gov/nchs/data/slaits/NSCH_Methodology_Report.pdf</a> for more information.</p> |  |   |
| <b>SPSS Code and Annotation</b>   |  |   |
| Not currently available (December 2008); for information contact CAHMI staff at <a href="mailto:CAHMI@ohsu.edu">CAHMI@ohsu.edu</a> .  |  |   |

|  |  |  |
|--|--|--|
| <b>INDICATOR 2.3</b>   |  | <b>How many children/youth have moderate or severe difficulties in the areas of emotions, concentration, behavior, or being able to get along with other people?</b> |
| <b>Survey Items Used</b>   | S2Q59 and S2Q60  |  |
| <b>Numerator</b>   | Children/youth with socio-emotional difficulties described as moderate or severe by their parents  |  |
| <b>Denominator</b>   | Children/youth ages 3–17 years   |  |
| <b>Description</b>   | Among all children/youth ages 3–17, percent with moderate to severe socio-emotional difficulties, as reported by their parents (S2Q60 = “Moderate” or “Severe”). |  |
| <b>Notes for Data-Users</b>  |  |  |
| <p>Questions S2Q59 and S2Q60 were drawn from the impact supplement to the Strengths and Difficulties Questionnaire (SDQ). Due to an inadvertent error in the questionnaire development process, the answer choices for the follow-up question do not match the answer choices for the copyrighted SDQ. Analysts should use caution when comparing estimates derived from the NSCH follow-up question to estimates derived from the proper SDQ impact question used in other surveys (e.g., the NHIS). See <a href="http://www.cdc.gov/nchs/data/slits/NSCH_Methodology_Report.pdf">www.cdc.gov/nchs/data/slits/NSCH_Methodology_Report.pdf</a> for more information.</p> |  |  |
| <b>SPSS Code and Annotation</b>  |  |  |
| <pre> NUMERIC ind2_3 (f4.0). DO IF S2Q59=0 or S2Q60=1.   COMPUTE ind2_3=0. END IF. DO IF S2Q60=2 or S2Q60=3.   COMPUTE ind2_3=1. END IF.  VAR LAB ind2_3 "Indicator 2.3: How many children/youth (ages 3-17) have moderate or severe difficulties in the areas of emotions concentration, behavior, or being able to get along with other people?". VAL LAB ind2_3 0 'No difficulties or minor difficulties' 1 'Moderate or severe difficulties in 1 or more areas'. EXE. </pre>   |  |  |

|   |  |   |
|---|--|---|
| <b>INDICATOR 2.4</b>  |  | <b>Overall, would you say (child’s name)’s mental and emotional health puts a burden on your family a great deal, a medium amount, a little, or not at all?</b> |
| <b>Survey Items Used</b>  | S2Q61  |   |
| <b>Numerator</b>  | Children/youth with socio-emotional difficulties whose families report being affected a great deal/medium amount   |   |
| <b>Denominator</b>  | Children/youth ages 3–17 years who have one or more parent-reported difficulties in the socio-emotional area   |   |
| <b>Description</b>  | Among children/youth ages 3–17 who have one or more parent-reported socio-emotional difficulties (S2Q59 = “Yes”), percent whose families are affected more than a little (S2Q61 = “medium” or “a great deal”). |   |
| <b>Notes for Data-Users</b>   |  |   |
| Only parents report who reported that their children has one or more socio-emotional difficulties (S2Q59 = Yes) were asked questions about how these difficulties affect the child and the child’s family.  |  |   |
| <b>SPSS Code and Annotation</b>   |  |   |
| <p>RECODE S2Q61<br/>           (1,2=1) (3,4=2) (else=sysmis) INTO ind2_4.</p> <p>VAR LAB Ind2_4 "Indicator 2.4: Overall, would you say (child's name)'s mental and emotional health puts a burden on your family a great deal, a medium amount, a little, or not at all? (ages 3-17 with parent-reported socio-emotional difficulties)".</p> <p>VAL LAB Ind2_4 1 'Affects family a great deal or medium amount' 2 'Affects family a little or not at all'.</p> <p>FORMATS (f4.0).</p> <p>EXE.</p> |  |   |

|  |   |
|--|---|
| <b>INDICATOR 2.5</b>   | <b>How many children/youth often exhibit caring, respectful behaviors when interacting other children and adults?</b> |
| <b>Survey Items Used</b>   | S7Q52, S7Q53, S7Q54, S7Q59  |
| <b>Numerator</b>   | In development  |
| <b>Denominator</b>   | In development  |
| <b>Description</b>   |   |
| <b>Notes for Data-Users</b>  |   |
| <p>This item is currently in development. For results on the individual items included in this indicator, please check individual questions in Section 7 of the survey: S7Q52, S7Q53, S7Q54, S7Q59.</p> <p>S7Q52 was drawn from the Positive Behaviors Scale. For more information, email SLAITS staff at <a href="mailto:slaits@cdc.gov">slaits@cdc.gov</a> or visit <a href="http://www.cdc.gov/nchs/data/slait/NSCH_Methodology_Report.pdf">www.cdc.gov/nchs/data/slait/NSCH_Methodology_Report.pdf</a></p> |   |
| <b>SPSS Code and Annotation</b>  |   |
| Not currently available (December 2008); for information contact CAHMI staff at <a href="mailto:CAHMI@ohsu.edu">CAHMI@ohsu.edu</a> .   |   |

| <b>INDICATOR 2.6      How many children/youth often exhibit two or more problematic behaviors?</b>  |  |
|---|--|
| <b>Survey Items Used</b>  | S7Q41, S7Q44, S7Q45, S7Q56   |
| <b>Numerator</b>  | Children/youth who often exhibit two or more problematic behaviors   |
| <b>Denominator</b>  | Children/youth ages 6–17 years   |
| <b>Description</b>  | Percent of children/youth ages 6–17 who often exhibit two or more problematic behaviors (S7Q41, S7Q44, S7Q45, S7Q56; response of “Usually/always” to “two or more”). |
| <b>Notes for Data-Users</b>   |  |
| <p>Problematic behaviors are defined as arguing too much, bullying or being cruel to others, disobeying, and acting stubborn, sullen or irritable.</p> <p>Questions S7Q41, S7Q44, S7Q45, S7Q48, S7Q56, S7Q62, and S7Q63 were drawn from the Behavior Problems Index. For more information, email SLAITS staff at <a href="mailto:slaits@cdc.gov">slaits@cdc.gov</a> or visit <a href="http://www.cdc.gov/nchs/data/slaits/NSCH_Methodology_Report.pdf">www.cdc.gov/nchs/data/slaits/NSCH_Methodology_Report.pdf</a>.</p>  |  |
| <b>SPSS Code and Annotation</b>   |  |
| <pre>DO IF AGEYR_CHILD&lt;=17 and AGEYR_CHILD&gt;=6 .   COUNT probbeh = S7Q41 S7Q44 S7Q45 S7Q56 (3 thru 4) . END IF. DO IF AGEYR_CHILD&lt;6 .   COMPUTE probbeh = 99. END IF. VAR LAB probbeh '# of problem behaviors'. EXE.</pre> <pre>RECODE probbeh (0 thru 1=0) (2 thru 4=1) INTO ind2_6. VAR LAB ind2_6 " Indicator 2.6: How many children/youth (ages 6-17) often exhibit 2 or more problematic behaviors? (derived)".</pre> <pre>VAL LAB ind2_6 0 'Seldom exhibits problematic behaviors' 1 'Often exhibits 2 or more problematic behaviors' 99 'Ages 0-5 not included'. MISSING VALUES ind2_6 (99). FORMATS ind2_6 (f4.0). EXE.</pre> |  |

| <b>INDICATOR 2.7</b>   |  |
|--|--|
| <b>How many children/youth whose parents have ever been told child has ADD/ADHD currently take medication for this condition?</b>  |  |
| <b>Survey Items Used</b>   | S2Q21 and S2Q62  |
| <b>Numerator</b>   | Children/youth who are currently taking medication for ADD/ADHD  |
| <b>Denominator</b>   | Children/youth ages 2–17 years   |
| <b>Description</b>   | Among children/youth ages 2–17, percent whose parents reported having ever been told by a doctor that child has ADD/ADHD and who are currently taking medication for this condition (S2Q21 and S2Q62 = “Yes”). |
| <b>Notes for Data-Users</b>  |  |
| <p>“ADD/ADHD Ever” is defined as children whose parents report ever being told by a doctor or health professional that child has Attention Deficit Disorder (ADD) or Attention Deficit Hyperactivity Disorder (ADHD) (S2Q21 = Yes).</p> <p>Use caution when interpreting responses to the questions about health conditions in the NSCH. A response of YES to having “ever been told by a doctor or other health professional” that a child has a specific health condition DOES NOT necessarily indicate that the child still has or ever had that particular condition. For this reason, affirmative responses to the specific health condition questions should not be interpreted as current prevalence.</p> |  |
| <b>SPSS Code and Annotation</b>  |  |
| <pre> RECODE S2Q62 (6,7=sysmis) (else=copy) INTO ind2_7. DO IF S2Q21=0.   COMPUTE ind2_7=3.   END IF. VAR LAB ind2_7 "Indicator 2.7: How many children/youth (ages 2-17) whose parents have ever been told child has ADD/ADHD currently take medication for this condition?". VAL LAB ind2_7 0 "ADD/ADHD ever; child not taking medication now" 1 "ADD/ADHD ever; child currently takes medication"   3 "Never told child has ADD/ADHD". FORMATS ind2_7 (f4.0). EXE.           </pre>  |  |



| <b>INDICATOR 2.8</b>   |   |
|--|---|
| <b>Has a doctor or health professional ever told you that (child's name) has autism?</b>   |   |
| <b>Survey Items Used</b>   | S2Q35   |
| <b>Numerator</b>   | Children/youth whose parents report ever being told by a doctor/health professional that child has autism.                                      |
| <b>Denominator</b>   | Children/youth ages 0–17 years  |
| <b>Description</b>   | Percent of children/youth ages 0–17 whose parents reported ever being told by a doctor/health professional that child had autism (S2Q35 = Yes). |
| <b>Notes for Data-Users</b>  |   |
| <p>Use caution when interpreting responses to the questions about specific health conditions in the NSCH. A response of YES to “having ever been told by a doctor or other health professional” that a child has a specific condition DOES NOT necessarily indicate that the child still has or ever had that particular condition. For this reason, affirmative responses to the specific health condition questions should not be interpreted as current prevalence.</p> |   |
| <b>SPSS Code and Annotation</b>  |   |
| <pre> RECODE S2Q35   (else=copy) INTO ind2_8. VAR LAB ind2_8 "Indicator 2.8: Has a doctor or health professional ever told you that (child's name) has autism?". VAL LAB ind2_8 0 'No' 1 'Yes' 6 'DK' 7 'Refused'. MISSING VALUES ind2_8 (6,7). FORMATS ind2_8 (f4.0). EXE. </pre>   |   |

|   |  |
|---|--|
| <b>INDICATOR 3.1</b>  | <b>Does (child's name) have any kind of health care coverage, including health insurance, prepaid plans such as HMOs, or government plans such as Medicaid?</b>                        |
| <b>Survey Items Used</b>  | S3Q01  |
| <b>Numerator</b>  | Children/youth who currently have health care coverage   |
| <b>Denominator</b>  | Children/youth ages 0–17 years   |
| <b>Description</b>  | Percent of children/youth ages 0–17 with any kind of health care coverage, including health insurance, prepaid plans such as HMOs, or government plans such as Medicaid (S3Q01 = Yes). |
| <b>Notes for Data-Users</b>   |  |
|   |  |
| <b>SPSS Code and Annotation</b>   |  |
| <pre> COMPUTE ind3_1 = S3Q01 . VAR LAB ind3_1 "Indicator 3.1: Does (child's name) have any kind of health care coverage?". VAL LAB ind3_1 0 'No' 1 'Yes' 6 'DK' 7 'Refused' . MISSING VALUES ind3_1 (6,7). FORMATS ind3_1 (f4.0). EXE. </pre> |  |

| <b>INDICATOR 3.2      How many children/youth had consistent health insurance coverage during the past 12 months?</b>   |  |
|---|--|
| <b>Survey Items Used</b>  | S3Q01 and S3Q04  |
| <b>Numerator</b>  | Children/youth who were consistently insured during the past year  |
| <b>Denominator</b>  | Children/youth ages 0–17 years   |
| <b>Description</b>  | Children/youth who were insured at the time of the survey (S3Q01 = Yes) and who did not experience periods of no insurance during the past 12 months (S3Q04 = No). |
| <b>Notes for Data-Users</b>   |  |
|   |  |
| <b>SPSS Code and Annotation</b>   |  |
| <pre>DO IF (S3Q01=0 or S3Q04=1) .   compute ind3_2 = 1 . end if. DO IF S3Q04=0.   compute ind3_2=0 . end if. format ind3_2 (f2.0). var lab ind3_2 "Indicator 3.2: How many children/youth (ages 0-17) had consistent health insurance coverage during the past 12 months? (derived)" . val lab ind3_2 0 'Consistently insured during past year' 1 'Currently uninsured or periods of no coverage during year' . EXE .</pre> |  |

| <b>INDICATOR 3.3</b>   |   | <b>What type of health insurance coverage, if any, did children/youth have at the time of the survey?</b> |
|--|---|---|
| <b>Survey Items Used</b>   | S3Q01, S3Q02  |   |
| <b>Numerators</b>  | <ul style="list-style-type: none"> <li>• Children/youth who are currently uninsured</li> <li>• Children/youth who currently have private insurance coverage</li> <li>• Children/youth who currently have public insurance coverage</li> </ul> |   |
| <b>Denominator</b>   | Children/youth ages 0–17 years  |   |
| <b>Description</b>   | Children/youth ages 0–17 whose health insurance coverage at the time of the survey was either private (S3Q01 = Yes and S3Q02 = No) or public (S3Q01 and S3Q02 = Yes) or none (S3Q01 = No).  |   |
| <b>Notes for Data-Users</b>  |   |   |
| Private health insurance is defined as any type of health insurance, including HMOs, other than public programs. Public health insurance is defined as Medicaid or the State Children’s Health Insurance Program (SCHIP).  |   |   |
| <b>SPSS Code and Annotation</b>  |   |   |
| <pre> RECODE S3Q02   (0=2) (ELSE=copy) INTO ind3_3. DO IF (S3Q01=0) .   COMPUTE ind3_3 = 3 . END IF.  VAR LAB ind3_3 "Indicator 3.3: What type of health insurance coverage, if any, did children/youth (ages 0-17) have at the time of the survey?". VAL LAB ind3_3 1 'Public insurance' 2 'Private insurance' 3 'Uninsured' 6 'DK' 7 'Refused'. MISSING VALUES ind3_3 (6,7). FORMATS ind3_3 (f4.0). EXE . </pre> |   |   |

| <b>INDICATOR 4.1</b>   |  | <b>How many children/youth had one or more preventive medical care visits during the past 12 months?</b> |
|--|--|--|
| <b>Survey Items Used</b>   | S4Q01 and S4Q03  |  |
| <b>Numerator</b>   | Children/youth who had one or more preventive medical care visits  |  |
| <b>Denominator</b>   | Children/youth ages 0–17 years   |  |
| <b>Description</b>   | Percent of children/youth ages 0–17 with one or more preventive medical care visits in the past 12 months. |  |
| <b>Notes for Data-Users</b>  |  |  |
| Denominator includes children/youth who did not see a health care provider for any type of medical care during 12 past months (S4Q01 = No).  |  |  |
| <b>SPSS Code and Annotation</b>  |  |  |
| <pre> RECODE S4Q03R (0=0) (1 thru 20=1) (else=copy) into ind4_1. DO IF S4Q01 = 0.   COMPUTE ind4_1 = 0. END IF.  VAR LAB ind4_1 "Indicator 4.1: How many children/youth (ages 0-17) had one or more preventive medical care visits during the past 12 months?". VAL LAB ind4_1 0 'NO preventive medical care visits' 1 'One or more preventive medical care visits' 96 'DK' 97 'Refused'. MISSING VALUES ind4_1 (96, 97). FORMATS ind4_1 (f4.0). EXE. </pre> |  |  |

| <b>INDICATOR 4.2</b>  |   |
|---|---|
| <b>How many children/youth with a need for routine preventive dental care, such as check-ups, screenings, and sealants, got all the care that was needed?</b>   |   |
| <b>Survey Items Used</b>  | S4Q10 and S4Q13   |
| <b>Numerator</b>  | Children/youth who got all needed preventive dental care  |
| <b>Denominator</b>  | Children/youth ages 1–17 years who needed preventive dental care during past 12 months                    |
| <b>Description</b>  | Percent of children/youth ages 1–17 who received needed preventive dental care during the past 12 months. |
| <b>Notes for Data-Users</b>   |   |
| <p>Children under 1 and children/youth who did not have natural teeth at the time of the survey (S2Q54 = has no natural teeth) were not included in any of the indicators addressing dental care. Children/youth who “needed preventive dental care” are defined as children/youth who saw a dentist during the past 12 months but did not get preventive dental care (S4Q09 = Yes) OR children/youth who needed preventive dental care during the past 12 months even though they did not see a dentist (S4Q10 = Yes).</p> |   |
| <b>SPSS Code and Annotation</b>   |   |
| <pre> NUMERIC ind4_2 (f4.0) . DO IF S4Q13=0 or S4Q10=1.   COMPUTE Ind4_2=1.   END IF. DO IF S4Q13=1.   COMPUTE Ind4_2=2.   END IF. VAR LAB Ind4_2 "Indicator 4.2: How many children/youth (ages 1-17) with a need for routine preventive dental care, such as check-ups, screenings, and sealants, got all the care that was needed?". VAL LAB Ind4_2 1 'Did not get all needed care' 2 'Got all needed care' . EXE. </pre>   |   |

| <b>INDICATOR 4.3</b>   |   | <b>How many children/youth had both medical AND dental preventive care visits in the past 12 months?</b> |
|--|---|--|
| <b>Survey Items Used</b>   | S4Q03 and S4Q09   |  |
| <b>Numerator</b>   | Children/youth who got both medical and dental preventive care  |  |
| <b>Denominator</b>   | Children/youth ages 0–17 years  |  |
| <b>Description</b>   | Percent of children/youth ages 0–17 with both a medical AND dental preventive care visit in the past 12 months. |  |
| <b>Notes for Data-Users</b>  |   |  |
| Children under 12 months of age needed only a preventive medical visit to qualify as a “Yes” response on this measure.   |   |  |
| <b>SPSS Code and Annotation</b>  |   |  |
| <pre> IF (S4Q01=0 or S4Q03R=0) med_prev = 1 . IF (S4Q03R&gt;=1 and S4Q03R &lt;= 95) med_prev = 2 . VARIABLE LABELS med_prev 'Medical preventive visit' . VALUE LABELS med_prev 1 'NO medical preventive visit' 2 'YES had medical preventive visit'. EXECUTE .  IF (S2Q56=1 or S2Q56=4 or S2Q56=5 or S2Q56=6 or S4Q09=0) den_prev = 1 . IF S4Q09=1 den_prev = 2 . VARIABLE LABELS den_prev 'Dental preventive visit' . VALUE LABELS den_prev 1 'NO Dental preventive visit' 2 'YES had Dental preventive visit'. EXECUTE .  IF (med_prev=1 or med_prev=2) and (den_prev=1 or den_prev=2) ind4_3 = 1 . IF (med_prev=1 or med_prev=2) and (ageyr_child=0) ind4_3 = 1 . IF (med_prev=2 and den_prev=2) ind4_3 = 2 . IF (med_prev=2 and ageyr_child=0) ind4_3 = 2 . VAR LAB ind4_3 "Indicator 4.3: How many children/youth (ages 0-17) had both medical AND dental"+ " preventive care visits in the past 12 months?". VAL LAB ind4_3 1 'Did NOT get both medical and dental preventive care visits' 2 'Got both medical and dental preventive care visits' . FORMATS ind4_3 (f4.0). EXE. </pre> |   |  |

| <b>INDICATOR 4.4</b>  |   |
|---|---|
| <b>During the past 12 months, how many times did (child's name) go to a hospital emergency room (ER) about his/her health? This includes ER visits that resulted in a hospital admission.</b>   |   |
| <b>Survey Items Used</b>  | S4Q01 and S4Q04   |
| <b>Numerators</b>   | <ul style="list-style-type: none"> <li>• Children/youth who did not go to a hospital ER</li> <li>• Children/youth who had one ER visit</li> <li>• Children/youth who had two or more ER visits</li> </ul> |
| <b>Denominator</b>  | Children/youth ages 0–17 years  |
| <b>Description</b>  | Percent of children/youth ages 0–17 who went to a hospital ER about his/her health no times, one time, or two or more times in the past 12 months.  |
| <b>Notes for Data-Users</b>   |   |
| Denominator includes children who did not see a health care provider for any type of medical care during 12 past months (S4Q01 = No).   |   |
| <b>SPSS Code and Annotation</b>   |   |
| <pre> RECODE S4Q04R (0=0) (1=1) (2 thru 5=2) (else=copy) into ind4_4. DO IF S4Q01 = 0.   COMPUTE ind4_4 = 0. END IF. VAR LAB ind4_4 "Indicator 4.4: During the past 12 months, how many times did (child's name) go"+ " to a hospital emergency room about his/her health?". VAL LAB ind4_4 0 '0 times' 1 '1 time' 2 '2 or more' 96 'DK' 97 'Refused'. MISSING VALUES ind4_4 (96, 97). FORMATS ind4_4 (f4.0). EXE. </pre> |   |



| <b>INDICATOR 4.5</b>   |   |
|--|---|
| <b>How many children/youth with current emotional, developmental, or behavioral problems that require treatment or counseling received some type of mental health care during the past 12 months?</b>  |   |
| <b>Survey Items Used</b>   | S2Q16 and S4Q23   |
| <b>Numerator</b>   | Children/youth who received treatment or counseling for mental health condition   |
| <b>Denominator</b>   | Children/youth ages 1–17 years with a current emotional, developmental, or behavioral problem requiring treatment or counseling (S2Q16 = Yes)                     |
| <b>Description</b>   | Among children/youth ages 1–17 with current emotional, developmental, or behavioral problems, percent who received treatment or counseling in the past 12 months. |
| <b>Notes for Data-Users</b>  |   |
| The denominator for this indicator only includes children/youth ages 1–17 years identified as having emotional, developmental, or behavioral problems requiring treatment or counseling at the time of the survey (S2Q16 = Yes).   |   |
| <b>SPSS Code and Annotation</b>  |   |
| <pre> NUMERIC ind4_5 (f4.0) . DO IF S2Q16=1 and S4Q23=1.   COMPUTE ind4_5=2. END IF. DO IF S2Q16=1 and S4Q23=0.   COMPUTE ind4_5=1. END IF. VAR LAB Ind4_5 "Indicator 4.5: How many children/youth (ages 1-17) with current emotional, developmental, or behavioral problems requiring treatment or counseling received some type of mental health care during the past 12 months?". VAL LAB Ind4_5 1 'Did NOT get mental health care/counseling' 2 'Received mental health care/counseling of some type'. EXE. </pre> |   |

| <b>INDICATOR 4.6</b>  |  | <b>During the past 12 months, did (child's name) receive all the medical care he/she needed?</b> |
|---|--|--|
| <b>Survey Items Used</b>  | S4Q07  |  |
| <b>Numerator</b>  | Children/youth who got all needed medical care   |  |
| <b>Denominator</b>  | Children/youth ages 0–17 years who needed and/or used medical care during the past 12 months                       |  |
| <b>Description</b>  | Percent of children/youth ages 0–17 received all the medical care they needed in the past 12 months (S4Q07 = Yes). |  |
| <b>Notes for Data-Users</b>   |  |  |
| Children/youth who “needed and/or used medical care” are defined as those who either saw a health care professional for any kind of medical care during the previous 12 months (S4Q01 = Yes) OR who needed some type of medical care during the past 12 months even though they did not see any health care professional (S4Q02 = Yes).       |  |  |
| <b>SPSS Code and Annotation</b>   |  |  |
| <pre> NUMERIC ind4_6 (f4.0) . DO IF S4Q07=0 or S4Q02=1.   COMPUTE Ind4_6=1. END IF. DO IF S4Q07=1.   COMPUTE Ind4_6=2. END IF. VAR LAB Ind4_6 "Indicator 4.6: During the past 12 months, did (child's name) receive all the medical care he/she needed?". VAL LAB Ind4_6 1 'Did not get all needed care' 2 'Got all needed care'. EXE. </pre> |  |  |

| <b>INDICATOR 4.7</b>   |  | <b>During the past 12 months, did (child's name) receive all the prescription medication (Rx) he/she needed?</b> |
|--|--|--|
| <b>Survey Items Used</b>   | S4Q17  |  |
| <b>Numerator</b>   | Children/youth who received all needed Rx  |  |
| <b>Denominator</b>   | Children/youth ages 0–17 years who needed Rx during past 12 months   |  |
| <b>Description</b>   | Percent of children/youth ages 0–17 received all the Rx they needed during the past 12 months (S4Q17 = Yes). |  |
| <b>Notes for Data-Users</b>  |  |  |
| <p>Children/youth who “need prescription medication” is defined as children/youth who currently use or have used Rx in the past 12 months (S2Q04 or S4Q15 = Yes) OR children/youth who did not use any Rx in the past 12 months (S4Q16 = Yes), even though they needed it during that time (S4Q17 = No). The number of children/youth reported to have needed Rx during the past 12 months, even though they did not use any was 1,785 (S4Q16 = Yes). Of this group, 154 were reported as not having all of the Rx they needed (S4Q17 = No).</p> |  |  |
| <b>SPSS Code and Annotation</b>  |  |  |
| <pre> RECODE S4Q17   (0=1) (1=2) (else=sysmis) INTO ind4_7. VAR LAB ind4_7 "Indicator 4.7: During the past 12 months, did (child's name) receive all the prescription medication he/she needed?". VAL LAB ind4_7 1 'Did not get all needed medication' 2 'Got all needed medication' 6 'DK' 7 'Refused'. MISSING VALUES ind4_7 (6,7). FORMATS ind4_7 (f4.0). EXE. </pre>   |  |  |

| <b>INDICATOR 4.8<br/>MEDICAL HOME<br/>Composite Measure</b>  |   | <b>How many children/youth receive health care that meets the American Academy of Pediatrics (AAP) definition of medical home?</b> |
|--|---|--|
| <b>Survey Items Used</b>   | S4Q01 and S4Q03; SA5Q01 – S5Q13a  |  |
| <b>Numerator</b>   | Children/youth meeting scoring criteria for having a Medical Home   |  |
| <b>Denominator</b>   | Children/youth ages 0–17 years  |  |
| <b>Description</b>   | Percent of children/youth ages 0–17 who have a primary care provider (e.g. personal doctor or nurse) AND one or more preventive care visits during past 12 months AND consistently received all needed care from their primary care provider. |  |
| <b>Notes for Data-Users</b>  |   |  |
| <p>The medical home composite measure and its sub-components are designed to operationalize the American Academy of Pediatrics (AAP) definition of “medical home”. According to this definition, all children ideally should have access to “accessible, continuous, comprehensive, family centered, coordinated, compassionate, and culturally effective care within a medical home.”</p> <p>For additional information about the questions in the medical home section (Section 5) of the 2003 National Survey of Children’s Health, go to: <a href="http://www.cdc.gov/nchs/data/slait/NSCH_Methodology_Report.pdf">www.cdc.gov/nchs/data/slait/NSCH_Methodology_Report.pdf</a> .</p>   |   |  |
| <b>SPSS Code and Annotation</b>  |   |  |
| <p>*****Personal doctor or nurse (PDN) Component *****</p> <p>***Personal doctor or nurse sub-component of medical home composite measure</p> <p>*NOTE: Use all responses to S5q01, including 6=DK and 7=Refused</p> <p>MISSING VALUES S5Q01 ().</p> <p>***** Family Centered Care Component *****</p> <p>*** COMMUNICATION with PDN sub-sub-component of MEDICAL HOME composite measure</p> <p>***** Step 1: The following syntax sets up the interim variables needed to construct overall score for "Communication with PDN" sub-component of MEDICAL HOME composite measure</p> <pre> RECODE S5Q02 S5Q04 (1 = 0) ( 2=25) (3=75) (4=100) (6=6) (7=7) INTO adeqtime explain . VARIABLE LABEL adeqtime "How often does ch's PDN spend enough time with them?". VARIABLE LABEL explain "How often does ch's PDN explain things so parent or ch understands?". VALUE LABEL adeqtime explain 0 'Never' 25 'Sometimes' 75 'Usually' 100 'Always' 6 'DK' 7 'Refused'. MISSING VALUES adeqtime explain (6,7). RECODE adeqtime explain (6=SYSMIS) (7=SYSMIS). EXECUTE .  COMPUTE interpret = 99. IF (s5q01 = 1) and (s5q13a = 1) interpret = 0. IF (s5q01 = 1) and (s5q13a = 2) interpret = 25. IF (s5q01 = 1) and (s5q13a = 3) interpret = 75. IF (s5q01 = 1) and (s5q13a = 4) interpret = 100. IF (s5q01 = 1) and (s5q13a = 6) interpret = 6. </pre> |   |  |

VAR LABEL interpret 'How often able to get needed interpreter other than family member for grp with PDN'.  
 VALUE LABEL interpret 0 'Never' 25 'Sometimes' 75 'Usually' 100 'Always' 6 'DK'.  
 MISSING VALUES interpret (6).

RECODE  
 interpret (99=SYSMIS).  
 EXECUTE .

\*\*\*\*\* Step 2: Construct "Communication with PDN" sub-component of MEDICAL HOME composite measure

COUNT  
 pdncomm\_cnt = adeqtime explain interpret (0, 25, 75, 100).  
 VAR LABEL pdncomm\_cnt 'Number of PDN communication elements needed'.  
 EXECUTE.

COMPUTE pdn\_sum = SUM (adeqtime, explain, interpret).  
 VAR LABEL pdn\_sum 'Total points across all needed elements of comm with PDN'.  
 EXECUTE.

DO IF (pdncomm\_cnt>0).  
 COMPUTE pdncom100 = (pdn\_sum / pdncomm\_cnt).  
 END IF.  
 VAR LABEL pdncom100 'Average score for communication with PDN sub-component of MEDICAL HOME' .  
 EXECUTE.

RECODE  
 pdncom100  
 (0 thru 67=0) (75 thru Highest=1) INTO pdncom\_2 .  
 VAR LABEL pdncom\_2 'PDN communication sub-component for Med Home composite measure'.  
 VALUE LABEL pdncom\_2 0 'Comm happens less than usually/always' 1 'Usually/always get needed communication'.  
 EXECUTE .

\*\*\*\*\*Comprehensive Care Component\*\*\*\*\*

\*\*\*ONE OR MORE PREVENTIVE medical care visits sub-component of MEDICAL HOME composite measure

MISSING VALUES s4q01 (6, 7).  
 MISSING VALUES s4q03r (96, 97).

COMPUTE prevcare\_2 = 0.  
 IF (s4q01 = 0) or (s4q03r = 0) prevcare\_2 = 1.  
 IF (s4q03r >=1) prevcare\_2 = 2.  
 VAR LABELS prevcare\_2 'At least 1 Preventive care visit during past 12 mos'.  
 VAL LABELS prevcare\_2 0 'Unknown' 1 'None in past 12 months' 2 'Had preventive care visit in past 12 months'.  
 EXECUTE.

\*\*\*GETTING CARE / advice from ch's PDN sub-component of MEDICAL HOME composite measure  
 (questions only asked for grp with PDN)

\*\*\*\*\* Step 1: The following syntax sets up the interim variables needed to construct overall score for "Getting needed care from PDN" sub-component of MEDICAL HOME composite measure

RECODE S5Q06A S5Q07A

```
(6=6) (7=7) (1 = 0) (2 = 25) (3 = 75) (4=100) (ELSE=SYSMIS) INTO phonehlp getcare .
VAR LABELS phonehlp "How often able to get advice over phone from ch's PDN when needed".
VAR LABELS getcare "How often able to get needed care right away from ch's PDN".
VALUE LABELS phonehlp getcare 0 'Never' 25 'Sometimes' 75 'Usually' 100 'Always' 6 'DK' 7 'Refused'.
RECODE
phonehlp getcare (6=SYSMIS) (7=SYSMIS) (999 = SYSMIS).
EXECUTE .
```

\*\*\*\*\* Step 2: Construct "Getting needed care from PDN" scoring sub-component of MEDICAL HOME composite measure

```
COUNT
getcare_cnt = phonehlp getcare (0, 25, 75, 100).
VAR LABEL getcare_cnt 'Number of getting care elements needed'.
EXECUTE.
```

```
COMPUTE getcare_sum = SUM (phonehlp, getcare).
VAR LABEL getcare_sum 'Total points across needed elements of getting phone or urgent care from PDN'.
EXECUTE.
```

```
DO IF (getcare_cnt>0).
COMPUTE getcare100 = (getcare_sum / getcare_cnt).
END IF.
VAR LABEL getcare100 'Average score for needed care sub-component of MEDICAL HOME' .
EXECUTE.
```

```
RECODE getcare100
(0 thru 67=0) (75 thru Highest=1) INTO getcare_2 .
VAR LABEL getcare_2 'Getting needed phone/urgent care from PDN sub-component for Med Home composite measure'.
VALUE LABEL getcare_2 0 'Care or advice available less than usually/always' 1 'Usually/always get needed care or advice'.
EXECUTE .
```

\*\*\*ACCESS TO NEEDED SPECIALIST & SERVICES sub-component of MEDICAL HOME composite measure (questions only asked for grp with PDN)

\*\*\*\*\* Step 1: The following syntax sets up the interim variables needed to construct overall score for "ACCESS to NEEDED SPECIALIST & SERVICES " sub-component of MEDICAL HOME composite measure

```
RECODE S5Q09A S5Q10A
(6=6) (7=7) (1 = 0) (2 = 25) (3 = 75) (4=100) (ELSE=SYSMIS) INTO specialist services .
VAR LABEL specialist "Problems getting needed care from specialist dr".
VAR LABEL services "Problems getting needed services or equip".
VALUE LABEL specialist services 0 'Big problem' 25 'Moderate problem' 75 'Small problem' 100 'No problem' 6 'DK' 7 'Refused'.
```

```
RECODE
specialist services (99=SYSMIS) (6=SYSMIS) (7 = SYSMIS).
EXECUTE .
```

\*\*\*\*\* Step 2: Construct "ACCESS to NEEDED SPECIALIST & SERVICES " sub-component of MEDICAL HOME composite measure

```
COUNT
access_cnt = specialist services (0, 25, 75, 100).
```

```

VAR LABEL access_cnt 'Number of access to care elements needed'.
EXECUTE.

COMPUTE access_sum = SUM (specialist, services).
VAR LABEL access_sum 'Total points across accessing needed specialist care or services elements of
MEDICAL HOME' .
EXECUTE.

DO IF (access_cnt>0).
COMPUTE access100 = (access_sum / access_cnt).
END IF.
VAR LABEL access100 'Average score for access to needed specialist care/services sub-component of
MEDICAL HOME' .
EXECUTE.

RECODE access100
(0 thru 67=0) (75 thru Highest=1) INTO access_2 .
VAR LABEL access_2 'Access to needed specialist care/services sub-component for Med Home composite
measure'.
VALUE LABEL access_2 0 'Significant problems accessing care' 1 'Few or no problems accessing care'.
EXECUTE .

*****Coordinated Care Component*****
*** FOLLOW UP w/ FAMILY sub-component of MEDICAL HOME composite measure (questions only asked
for group with PDN and needing specialist and/or specialized services)

***** Step 1: The following syntax sets up the interim variables needed to construct overall score for
"FOLLOW UP w/ FAMILY " sub-component of MEDICAL HOME composite measure

RECODE S5Q09C S5Q10C
(1=0) (2=25) (3=75) (4=100) (ELSE = SYSMIS) INTO fu_specialist fu_serve .
VAR LABEL fu_specialist 'How often PDN follows up w/ family after specialist visit'.
VAR LABEL fu_serve 'How often PDN follows up w/ family after special services/equip'.
VALUE LABEL fu_specialist fu_serve 0 'Never' 25 'Sometimes' 75 'Usually' 100 'Always'.
EXECUTE .

***** Step 2: Construct "FOLLOW UP w/ FAMILY" sub-component of MEDICAL HOME composite measure

COUNT
coor_cnt = fu_specialist fu_serve (0, 25, 75, 100).
VAR LABEL coor_cnt 'Number of coor care follow up elements needed'.
EXECUTE.

COMPUTE coor_sum = SUM (fu_specialist, fu_serve).
VAR LABEL coor_sum 'Total points on needed follow up care elements of MEDICAL HOME' .
EXECUTE.

DO IF (coor_cnt>0).
COMPUTE coor100 = (coor_sum / coor_cnt).
END IF.
VAR LABEL coor100 'Average score on follow up care from PDN coor care sub-component of MEDICAL
HOME' .
EXE.

RECODE coor100
(0 thru 67=0) (75 thru Highest=1) INTO coor_2 .

```

```
VAR LABEL coor_2 'Coor care sub-component for Med Home composite measure'.
VALUE LABEL coor_2 0 'PDN follows up less than usually/always' 1 'PDN usually/always follows up'.
EXECUTE .
```

```
***** MEDICAL HOME COMPOSITE MEASURE*****
```

```
***The following code uses the 5 sub-components created above to derive the MEDICAL HOME composite measure using score of 75 pts or above on EVERY needed sub-component scoring approach
```

```
*****Step 1: Construct medical home composite measure without the preventive care visit criterion
```

```
COUNT
```

```
mh_cnt = pdncom_2 getcare_2 access_2 coor_2 (0,1).
```

```
VAR LABEL mh_cnt 'Number of sub-components of Medical Home needed'.
```

```
EXECUTE.
```

```
COUNT
```

```
mh_cnt2 = pdncom_2 getcare_2 access_2 coor_2 (1).
```

```
VAR LABEL mh_cnt2 'Number needed Medical Home sub-components with score of 75pt or above'.
```

```
EXECUTE.
```

```
DO IF (mh_cnt>0).
```

```
COMPUTE mh2_score = (mh_cnt2 / mh_cnt) * 100.
```

```
END IF.
```

```
VAR LABEL mh2_score '% of needed MEDICAL HOME sub-components with score 75pt or above' .
```

```
EXECUTE.
```

```
COMPUTE mh_yn = 0.
```

```
IF ((SYSMIS (mh2_score)) and ((s5q01 = 6) or (s5q01 = 7))) mh_yn = 999.
```

```
IF (mh2_score = 100) mh_yn = 1.
```

```
IF (mh2_score < 100) mh_yn = 0.
```

```
VAR LABEL mh_yn "% meet MED HOME threshold of 75pts or above on EVERY needed sub-component - prev care visit not included" .
```

```
VALUE LABEL mh_yn 0 "No PDN or PDN & less than 75pts on 1 or more needed sub-components"
```

```
1 "PDN & 75 pts or above on EVERY needed sub-component" 999 "DK or Refused to PDN" .
```

```
EXECUTE.
```

```
RECODE mh_yn
```

```
(999 = SYSMIS).
```

```
EXECUTE.
```

```
*****Step 2: Construct MEDICAL HOME composite measure with at least one preventive care visit during last 12 mos criterion added
```

```
COMPUTE Ind4_8 = 999.
```

```
IF ((mh_yn= 0) and (prevcare_2 >= 1)) Ind4_8 = 0.
```

```
IF ((mh_yn= 1) and (prevcare_2 = 1)) Ind4_8 = 0.
```

```
IF ((mh_yn= 1) and (prevcare_2 = 2)) Ind4_8 = 1.
```

```
VAR LABEL Ind4_8 "How many children/youth (ages 0-17) receive health care that meets the AAP definition of medical home?".
```

```
VALUE LABEL Ind4_8
```

```
0 'Care DOES NOT meet medical home definition'
```

```
1 'Care MEETS medical home definition'.
```

```
RECODE Ind4_8
```

```
(999 = SYSMIS).
```

```
EXECUTE.
```



| <b>INDICATOR 4.9</b>   |   |
|--|---|
| <b>A personal doctor or nurse (PDN) is a health professional who knows your child well and is familiar with your child's health history. Do you have one or more persons you think of as (child's name)'s PDN?</b>   |   |
| <b>Survey Items Used</b>   | S5Q01   |
| <b>Numerator</b>   | Children/youth who have a PDN   |
| <b>Denominator</b>   | Children/youth ages 0–17 years  |
| <b>Description</b>   | Percent of children/youth ages 0–17 with parents who have one or more persons they think of as their child's PDN (S5Q01 = Yes). |
| <b>Notes for Data-Users</b>  |   |
| For more information about the scoring of this and other components of medical home derived from this survey, email <a href="mailto:cahmi@ohsu.edu">cahmi@ohsu.edu</a> .   |   |
| <b>SPSS Code and Annotation</b>  |   |
| <pre> RECODE   S5Q01   (ELSE=Copy) INTO ind4_9 .  VARIABLE LABEL ind4_9 "Indicator 4.9: A personal doctor or nurse is a health professional who knows your child well" + " and is familiar with your child's health history. Do you have one or more person(s) you think of as" + "(child's name)'s personal doctor or nurse?". VALUE LABEL ind4_9   0 'No'   1 'Yes'   6 'DK'   7 'Refused'. MISSING VALUES ind4_9 (6,7). EXECUTE. </pre> |   |

| <b>INDICATOR 4.10</b>   |  |
|---|--|
| <b>How many children/youth have a personal doctor or nurse (PDN) who consistently spends enough time with them and explains things in ways that children and parents can understand?</b>  |  |
| <b>Survey Items Used</b>  | S5Q01; S5Q02 – S5Q04   |
| <b>Numerator</b>  | Children/youth whose PDN consistently spends enough time and explains things   |
| <b>Denominator</b>  | Children/youth ages 0–17 years   |
| <b>Description</b>  | Percent of children/youth ages 0–17 whose PDN consistently spends enough time with them and explains things in a way that children and parents can understand. (S5Q01 = Yes; S5Q02 and S5Q04 = “Always” or “Usually”). |
| <b>Notes for Data-Users</b>   |  |
| <p>Questions S5Q02 and S5Q04 are only asked for children who have one or more persons their parents consider to be the child’s PDN (S5Q01 = Yes). PDN is a health professional who knows the child well and is familiar with the child’s health history. This can be a general doctor, a pediatrician, a specialist doctor, a nurse practitioner, or a physician’s assistant.</p> <p>For more information about the scoring of the components of medical home derived from this survey, email <a href="mailto:cahmi@ohsu.edu">cahmi@ohsu.edu</a>.</p>   |  |
| <b>SPSS Code and Annotation</b>   |  |
| <pre> COMPUTE ind4_10 = 99. IF (s5q01 = 0) ind4_10 = 3. IF (pdncom_2 = 0) ind4_10 = 2. IF (pdncom_2 = 1) ind4_10 = 1. MISSING VALUES ind4_10 (99). VAR LABEL ind4_10 'Indicator 4.10: How many children/youth (ages 0-17) have a personal doctor or nurse (PDN) who consistently spends' + ' enough time with them and explains things in ways that children and parents can understand?'. VALUE LABEL ind4_10   1 'Personal dr/nurse consistently spends enough time and explains well'   2 'Personal dr/nurse does not consistently spend enough time or explain well'   3 'Child does not have a personal dr/nurse'   99 'DK/Ref to all comm items or no PDN'. EXECUTE. </pre> |  |

| <b>INDICATOR 4.11</b>  |  | <b>How many children/youth have a personal doctor or nurse (PDN) who is consistently available when phone advice or urgent care is needed for child?</b> |
|--|--|--|
| <b>Survey Items Used</b>   | S5Q01; S5Q06 – S5Q07A  |  |
| <b>Numerator</b>   | Children/youth whose PDN is consistently available for phone advice and/or urgent care   |  |
| <b>Denominator</b>   | Children/youth ages 0–17 years who needed phone advice and/or urgent from their PDN during the past 12 months  |  |
| <b>Description</b>   | Among children/youth ages 0–17 with a PDN and who needed phone advice and/or urgent care, percent whose PDN is consistently available when phone advice or urgent care is needed (S5Q06A and/or S5Q07A = “Always” or “Usually”). |  |
| <b>Notes for Data-Users</b>  |  |  |
| <p>Only children who have a PDN (S5Q01 = Yes) and who needed phone advice and/or urgent care for an injury or illness during the past 12 months (S5Q06 and S6Q07 = Yes) were asked the questions about how often their PDN was available to give urgently needed care or phone advice. A PDN is a health professional who knows the child well and is familiar with the child’s health history. This can be a general doctor, a pediatrician, a specialist doctor, a nurse practitioner, or a physician’s assistant.</p> <p>For more information about the scoring of the components of medical home derived from this survey, email <a href="mailto:cahmi@ohsu.edu">cahmi@ohsu.edu</a>.</p> |  |  |
| <b>SPSS Code and Annotation</b>  |  |  |
| <pre> COMPUTE ind4_11 = 99. IF (s5q01 = 0) ind4_11 = 3. IF (getcare_2 = 0) ind4_11 = 0. IF (getcare_2 = 1) ind4_11 = 1. MISSING VALUES ind4_11 (3, 99). VAR LABEL ind4_11 "Indicator 4.11: How many children/youth (ages 0-17) have a personal doctor or nurse (PDN) who is consistently" + "available when phone advice or urgent care is needed for child? (derived -- group needing phone advice and/or urgent care only)". VALUE LABEL ind4_11   0 'PDN not consistently available'   1 'PDN consistently available'   3 'Child does not have a personal dr/nurse'   99 'DK/Ref to items, did not need, or no PDN'. EXECUTE. </pre>  |  |  |

| <b>INDICATOR 4.12</b>   |   | <b>How many children/youth had problems getting the specialty care, services, or equipment recommended by their personal doctor or nurse (PDN)?</b> |
|---|---|---|
| <b>Survey Items Used</b>  | S5Q01; S5Q09 – S5Q09A; and/or S5Q10 – S5Q10A  |   |
| <b>Numerator</b>  | Children/youth who experienced significant problems getting recommended care  |   |
| <b>Denominator</b>  | Children/youth ages 0–17 years who needed specialist care and/or specialized services or equipment recommended by their PDN during the past 12 months   |   |
| <b>Description</b>  | Among children/youth ages 0–17 who have a PDN and needed specialist care and/or specialized services or equipment recommended by their PDN, percent who experienced problems getting them (S5Q09A and/or S5Q10A = “a big problem” or “a moderate problem”). |   |
| <b>Notes for Data-Users</b>   |   |   |
| <p>Only children who have a PDN (S5Q01 = Yes) and who needed specialist care and/or specialized health services or equipment during the past 12 months (S5Q09 and S5Q10 = Yes) were asked the questions about level of problems experienced getting needed care. A PDN is a health professional who knows the child well and is familiar with the child’s health history. This can be a general doctor, a pediatrician, a specialist doctor, a nurse practitioner, or a physician’s assistant.</p> <p>For more information about the scoring of the components of medical home derived from this survey, email <a href="mailto:cahmi@ohsu.edu">cahmi@ohsu.edu</a>.</p>      |   |   |
| <b>SPSS Code and Annotation</b>   |   |   |
| <pre> COMPUTE ind4_12 = 99. IF (s5q01 = 0) ind4_12 = 3. IF (access_2 = 0) ind4_12 = 0. IF (access_2 = 1) ind4_12 = 1. MISSING VALUES ind4_12 (3, 99).  VAR LABEL ind4_12 "Indicator 4.12: How many children/youth (ages 0-17) had problems getting the specialty care, services, " + "or equipment recommended by their personal doctor/nurse (PDN)? (derived - children who needed specialty care, services, or equipment only)". VALUE LABEL ind4_12   0 'Significant problems getting recommended care'   1 'Few or no problems getting recommended care'   3 'Child does not have a personal dr/nurse'   99 'DK/Ref to items, did not need, or no PDN'. EXECUTE. </pre> |   |   |

| <b>INDICATOR 4.13</b>  |  |
|--|--|
| <b>How many children/youth have a personal doctor or nurse (PDN) who follows up with family after child sees specialist or gets specialized services/equipment?</b>  |  |
| <b>Survey Items Used</b>   | S5Q01; S5Q09C and/or S5Q10C  |
| <b>Numerator</b>   | Children/youth whose PDN consistently follows up after specialized care or equipment   |
| <b>Denominator</b>   | Children/youth ages 0–17 years who have a PDN and needed specialist care or specialized services/equipment during the past 12 months   |
| <b>Description</b>   | Among children/youth ages 0–17 who have a PDN and got specialist care or specialized services/equipment, percent whose PDN consistently follows up with family (S5Q09C and/or S5Q10C = “Usually” or “Always”). |
| <b>Notes for Data-Users</b>  |  |
| <p>Only children who have a PDN (S5Q01 = Yes) and who needed specialist care and/or specialized health services or equipment during the past 12 months (S5Q09 and S5Q10 = Yes) were asked the questions about how often their PDN followed up with the family after child received care. A PDN is a health professional who knows the child well and is familiar with the child’s health history. This can be a general doctor, a pediatrician, a specialist doctor, a nurse practitioner, or a physician’s assistant.</p> <p>For more information about the scoring of the components of medical home derived from this survey, email <a href="mailto:cahmi@ohsu.edu">cahmi@ohsu.edu</a>.</p> |  |
| <b>SPSS Code and Annotation</b>  |  |
| <pre> COMPUTE ind4_13 = 99. IF (s5q01 = 0) ind4_13 = 3. IF (coor_2 = 0) ind4_13 = 0. IF (coor_2 = 1) ind4_13 = 1. MISSING VALUES ind4_13 (3, 99).  VAR LABEL ind4_13 "Indicator 4.13: How many children/youth (ages 0-17) have a personal doctor or nurse who follows up with family after" + "child sees specialist or gets specialized services/equipment? (derived - children who needed specialty care, services, or equipment only)". VALUE LABEL ind4_13   0 'PDN does not consistently follow up'   1 'PDN consistently follows up'   3 'Child does not have a personal dr/nurse'   99 'DK/Ref to items, did not need, or no PDN'. EXECUTE. </pre>                                      |  |

| <b>INDICATOR 4.14</b>   |   |
|---|---|
| <b>During the past 12 months, did (child's name)'s doctors or other health care professionals ask if you have concerns about his/her learning, development, or behavior?</b>  |   |
| <b>Survey Items Used</b>  | S6Q28   |
| <b>Numerator</b>  | Young children who had health care visit at which a health care professional asked parents about concerns regarding child's learning, development or behavior |
| <b>Denominator</b>  | Children ages 0–5 years   |
| <b>Description</b>  | Percent of children ages 0–5 whose doctors asked if parents have concerns about child's learning, development, or behavior (S6Q28 = Yes).                     |
| <b>Notes for Data-Users</b>   |   |
| <b>SPSS Code and Annotation</b>   |   |
| <pre> RECODE S6Q28 (Else=Copy) INTO ind4_14 . DO IF AGEYR_CHILD&lt;6 and S4Q01=0.   COMPUTE ind4_14 =3. END IF.  VAR LAB ind4_14 " Indicator 4.14: During the past 12 months, did (child's name)'s doctors or other health care professionals"+ " ask if you have concerns about his/her learning, development, or behavior? (ages 0-5)". VAL LAB ind4_14 0 'Visited dr, but not asked' 1 'Visited dr, asked about concerns' 3 'Child did not visit doctor' 6 'DK' 7 'Refused'. MISSING VALUES ind4_14 (6,7). FORMATS ind4_14 (f4.0). EXE. </pre> |   |

| <b>INDICATOR 4.15</b>  |   |
|--|---|
| <b>During the past 12 months, did (child's name)'s doctors give you specific information to address your concerns about his/her learning, development, or behavior?</b>  |   |
| <b>Survey Items Used</b>   | S6Q29   |
| <b>Numerator</b>   | Children whose parents were highly concerned and got needed information from the child's doctor   |
| <b>Denominator</b>   | Children ages 0–5 years whose parents were highly concerned about their child's learning, development, or behavior  |
| <b>Description</b>   | Percent of children ages 0–5 whose parents were highly concerned about their learning, development or behavior and got information addressing their concerns from child's doctor (S6Q29 = Yes). |
| <b>Notes for Data-Users</b>  |   |
| <p>Question S6Q29 was only asked for children whose parents answered "A lot concerned" to any of questions S6Q09 through S6Q27 and/or "Yes" to question S6Q08.</p> <p>The PEDS (Parents' Evaluation of Developmental Status) is a standardized tool designed to identify children at risk for developmental, behavioral, or social delays. The NSCH uses the non-clinical version of the PEDS. Researchers interested in analyzing NSCH data collected with the PEDS instrument will need to consult PEDS documentation for scoring instructions at <a href="http://www.pedstest.com">www.pedstest.com</a>. Health care providers interested in using the PEDS to assess or make decisions about the developmental status for individual children, need to use the clinical version of the PEDS instrument, which can be obtained from Ellsworth &amp; Vandermeer Press, LLC. National data for the PEDS are also available from the 2000 National Survey of Early Childhood Health. For more information, see <a href="http://www.cdc.gov/nchs/data/slait/NSCH_Methodology_Report.pdf">www.cdc.gov/nchs/data/slait/NSCH_Methodology_Report.pdf</a>.</p> |   |
| <b>SPSS Code and Annotation</b>  |   |
| <p>RECODE S6Q29 (Else=Copy) INTO ind4_15 .<br/> VAR LAB ind4_15 "Indicator 4.15: During the past 12 months, did (child's name)'s doctors give you specific information to address your concerns about his/her learning, development, or behavior? (ages 0-5 with highly concerned parents only)".</p> <p>VAL LAB ind4_15<br/> 0 'Highly concerned but did not get info'<br/> 1 'Highly concerned AND got needed info'<br/> 6 'DK'<br/> 7 'Refused'.</p> <p>MISSING VALUES ind4_15 (6,7).<br/> FORMATS ind4_15 (f4.0).<br/> EXE.</p>  |   |

| <b>INDICATOR 5.1</b>   |  | <b>How many children regularly attended nursery school, preschool, kindergarten, Head Start, or Early Start during the past month?</b> |
|--|--|--|
| <b>Survey Items Used</b>   | S6Q51 and S6Q52  |  |
| <b>Numerator</b>   | Children who regularly attended early childhood education  |  |
| <b>Denominator</b>   | Children ages 3–5 years  |  |
| <b>Description</b>   | Percent of children ages 3–5 who regularly attended nursery school, preschool, kindergarten and/or Head Start or Early Start during the past month (S6Q51 and/or S6Q52 = Yes). |  |
| <b>Notes for Data-Users</b>  |  |  |
| Question S2Q51 (nursery school, preschool, or kindergarten attendance) is only asked for children ages 3–5 years. Question S2Q52 (Head Start or Early Start attendance) is asked for children ages 0–5 years; however, responses for children ages 3–5 years only are included in the denominator for this indicator.  |  |  |
| <b>SPSS Code and Annotation</b>  |  |  |
| <pre>DO IF (S6Q52=0 and s6q51&lt;&gt;1) or (S6Q51=0 and S6Q52&lt;&gt;1). COMPUTE ind5_1=0. END IF. DO IF (S6Q51=1 or S6Q52=1) and (AGEYR_CHILD&gt;=3). COMPUTE ind5_1=1. END IF. DO IF (S6Q51=6 or s6q51=7) and (s6q52=6 or s6q52=7). COMPUTE ind5_1=99. END IF.  VAR LAB ind5_1 "Indicator 5.1: How many children (ages 3-5) regularly attended nursery school, preschool, kindergarten, Head Start, or Early Start during the past month?". VAL LAB ind5_1   0 'Did not attend during past month'   1 'Regularly attended during past month'   99 'DK or Refused both items'. MISSING VALUES ind5_1 (99). FORMATS ind5_1 (f2.0) EXE.</pre> |  |  |



| <b>INDICATOR 5.2</b>  |  | <b>Since starting kindergarten, has (child's name) repeated any grades?</b> |
|---|--|---|
| <b>Survey Items Used</b>  | S7Q09  |   |
| <b>Numerator</b>  | Children/youth who have repeated one or more grades since starting kindergarten                                |   |
| <b>Denominator</b>  | Children/youth ages 6–17 years   |   |
| <b>Description</b>  | Percent of children/youth ages 6–17 who repeated one or more grades since starting kindergarten (S7Q09 = Yes). |   |
| <b>Notes for Data-Users</b>   |  |   |
| Question S7Q09 was asked for all children/youth currently enrolled in public or private schools, for those who were not enrolled in any school at the time of the survey (S7Q01 = Yes OR S7Q01F = Yes), and for children who were home-schooled during the past year. |  |   |
| <b>SPSS Code and Annotation</b>   |  |   |
| <pre> COMPUTE ind5_2 = S7Q09. VAR LAB ind5_2 "Indicator 5.2: Since starting kindergarten, has (child's name) repeated any grades?". VAL LAB ind5_2   0 'No'   1 'Yes'   6 'DK'   7 'Refused'. MISSING VALUES ind5_2 (6,7). FORMATS ind5_2 (f4.0). EXE. </pre>         |  |   |

|   |   |   |
|---|---|---|
| <b>INDICATOR 5.3</b>  |   | <b>Did (child's name) participate in one or more organized activities outside of school, such as sports teams or lessons, clubs, or religious groups?</b> |
| <b>Survey Items Used</b>  | S7Q10, S7Q11 or S7Q11A  |   |
| <b>Numerator</b>  | Children/youth who participated in one or more organized activities outside of school   |   |
| <b>Denominator</b>  | Children/youth ages 6–17 years  |   |
| <b>Description</b>  | Percent of children/youth ages 6–17 who participated in one or more organized activities outside of school (S7Q10 = Yes or S7Q11 = Yes or (S7Q11a = Yes). |   |
| <b>Notes for Data-Users</b>   |   |   |
| Activities outside of school are defined as: sports teams or lessons, clubs and organizations such as Scouts, religious groups or any other organized event or activity that takes place after school or on weekends.   |   |   |
| <b>SPSS Code and Annotation</b>   |   |   |
| <pre>DO IF (S7Q10=1 or S7Q11=1 or S7Q11A=1). COMPUTE ind5_3=1. END IF. DO IF (S7Q10=6 or S7Q10=7) and (S7Q11=6 or S7Q11=7) and (S7Q11A=6 or S7Q11A=7). COMPUTE ind5_3=99. END IF. DO IF (S7Q10=0 and S7Q11=0 and S7Q11A=0). COMPUTE ind5_3=0. END IF.  VAR LAB ind5_3 "Indicator 5.3: How many children/youth (ages 6-17) participate in one or more organized activities outside of school, such as sports teams or lessons, clubs, or religious groups?". VAL LAB ind5_3   0 'Did not participate in organized activities'   1 'Participated in 1 or more organized activities'   99 'DK or Refused on all three items'. MISSING VALUES ind5_3 (99). FORMATS ind5_3 (f2.0) EXE.</pre> |   |   |

| <b>INDICATOR 5.4</b>   |   |
|--|---|
| <b>During the past 12 months, has (child's name) been involved in any type of community service or volunteer work at school, church, or in the community?</b>  |   |
| <b>Survey Items Used</b>   | S7Q17   |
| <b>Numerator</b>   | Children/youth who participated in any type of community service or volunteer work  |
| <b>Denominator</b>   | Children/youth ages 12–17 years   |
| <b>Description</b>   | Percent of children/youth ages 12–17 who participated in any type of community service or volunteer work during the past 12 months (S7Q17 = Yes). |
| <b>Notes for Data-Users</b>  |   |
| <b>SPSS Code and Annotation</b>  |   |
| <pre> RECODE   S7Q17   (ELSE=Copy) INTO ind5_4 . EXECUTE . VAR LAB ind5_4 "Indicator 5.4: During the past 12 months, has (child's name) been involved in any type of"+   " community service or volunteer work at school, church, or in the community? (S7Q17 -- ages 12-17 only)". VAL LAB ind5_4   0 'Did NOT participate'   1 'Participated in volunteer work'   6 "Don't know"   7 'Refused' . MISSING VALUES ind5_4 (6,7). FORMATS ind5_4 (f2.0). exe. </pre> |   |

| <b>INDICATOR 5.5</b>   |  | <b>During the past week, how many hours did (child's name) work for pay?</b> |
|--|--|--|
| <b>Survey Items Used</b>   | S7Q19  |  |
| <b>Numerators</b>  | <ul style="list-style-type: none"> <li>Youth did not work for pay during the past week</li> <li>Youth who worked for pay 1–9 hours during the past week</li> <li>Youth who worked for pay 10 or more hours during the past week</li> </ul> |  |
| <b>Denominator</b>   | Youth ages 12–17 years   |  |
| <b>Description</b>   | Percent of youth ages 12–17 who did not work for pay, or who worked for pay 1–9 hours, or 10 or more hours.  |  |
| <b>Notes for Data-Users</b>  |  |  |
| “Working for pay” only includes work done outside the home.  |  |  |
| <b>SPSS Code and Annotation</b>  |  |  |
| <pre> RECODE S7Q19 (0=0) (1 thru 9=1) (995=1) (10 thru 200=2) (else=copy) into ind5_5. VAR LAB ind5_5 "Indicator 5.5: During the past week, how many hours did (child's name) work for pay?". VAL LAB ind5_5 0 'None' 1 'Less than 10 hours' 2 '10 hours or more' 996 'DK' 997 'Refused'. MISSING VALUES ind5_5 (996, 997). FORMATS ind5_5 (f4.0). EXE. </pre> |  |  |

| <b>INDICATOR 5.6 On an average school day, about how much time does (child's name) usually spend reading for pleasure?</b>   |   |
|--|---|
| <b>Survey Items Used</b>   | S7Q26, S7Q26A   |
| <b>Numerators</b>  | <ul style="list-style-type: none"> <li>• Children/youth who do not read on an average school day</li> <li>• Children/youth who read less than 30 minutes on an average school day</li> <li>• Children/youth who read 30–60 minutes on an average school day</li> <li>• Children/youth who read more than 60 minutes on an average school day</li> </ul> |
| <b>Denominator</b>   | Children/youth ages 6–17 years  |
| <b>Description</b>   | Percent of children/youth ages 6–17 who do not read for pleasure, or who read for less than 30 minutes, 30–60 minutes, or more than 60 minutes on an average school day.  |
| <b>Notes for Data-Users</b>  |   |
| <p>“Reading for pleasure” is defined as time when child reads to him/herself or is read to by another person. It does not include listening to books read by or with the help of an audiotape, record, CD, or computer.</p>  |   |
| <b>SPSS Code and Annotation</b>  |   |
| <pre> RECODE S7Q26 (995=0.5) (else=copy) into S7Q26r2. MISSING VALUES S7Q26r2 (996, 997). RECODE S7Q26r2 (else=copy) into S7Q26r3. MISSING VALUES S7Q26r3 (996, 997). DO IF (S7Q26A=1).   COMPUTE S7Q26r3 =( S7Q26r2*60). END IF. EXE.  RECODE S7Q26r3 (0=0) (0.5 thru 30=1) (31 thru 60=2) (61 thru 995=3) (998 thru 1800=3) (else=copy) into ind5_6. VAR LAB ind5_6 "Indicator 5.6: On an average school day, about how much time does (child's name) usually spend reading for pleasure? (ages 6-17 only)". VAL LAB ind5_6   0 'None'   1 '30 minutes or less'   2 '31-60 minutes'   3 'Over 60 minutes'   996 'DK'   997 'Refused'. MISSING VALUES ind5_6 (996, 997). FORMATS IND5_6 (F4.0). EXE. </pre> |   |

| <b>INDICATOR 5.7</b>   |  | <b>How often does (child's name) attend religious services?</b> |
|--|--|---|
| <b>Survey Items Used</b>   | S8Q02  |   |
| <b>Numerators</b>  | <ul style="list-style-type: none"> <li>• Children/youth who do not attend religious services</li> <li>• Children/youth who attend religious services once a year</li> <li>• Children/youth who attend religious services once a month</li> <li>• Children/youth who attend religious services once a week or more often</li> </ul> |   |
| <b>Denominator</b>   | Children/youth ages 0–17 years   |   |
| <b>Description</b>   | Percent of children/youth ages 0–17 who do not attend religious services, or who attend religious services at least once per year (but less than once per month), at least once per month (but less than once per week), or once per week or more.   |   |
| <b>Notes for Data-Users</b>  |  |   |
| <b>SPSS Code and Annotation</b>  |  |   |
| RECODE S8Q02R<br>(0=0) (1=1) (2=2) (3 thru 4=3) (else=copy) into ind5_7.<br><br>VAR LAB ind5_7 "Indicator 5.7: How often does (child's name) attend religious services?".<br>VAL LAB ind5_7<br>0 'Never'<br>1 'Once or more per year, less than once per month'<br>2 'Once or more per month, less than once per week'<br>3 'Once or more per week or daily'<br>6 'DK'<br>7 'Refused'.<br>MISSING VALUES ind5_7 (6,7).<br>FORMATS ind5_7 (f4.0).<br>EXE. |  |   |

| <b>INDICATOR 6.1</b>  |  | <b>Would you say that in general (child's mother's name)'s health is excellent, very good, good, fair, or poor?</b> |
|---|--|---|
| <b>Survey Items Used</b>  | S9Q08  |   |
| <b>Numerators</b>   | <ul style="list-style-type: none"> <li>• Children/youth whose mother's general health is excellent or very good</li> <li>• Children/youth whose mother's general health is good</li> <li>• Children/youth whose mother's general health is fair or poor</li> </ul> |   |
| <b>Denominator</b>  | Children/youth ages 0–17 years who live with their biological, step, foster or adoptive mothers  |   |
| <b>Description</b>  | Percent of children ages 0–17 whose mother's general health is excellent/very good, good, or fair/poor.  |   |
| <b>Notes for Data-Users</b>   |  |   |
| <p>When the respondent to S9Q08 was the child's mother (biological, step, foster, adoptive), she rated her own physical health status. Respondents who were not the child's mother (e.g., father or other relative) gave a proxy rating of the mother's physical health. Nationally, about 94 percent of children had a biological, step, foster, or adoptive mother in the household.</p> <p>Results for this question are weighted to reflect the population of children/youth ages 0–17 years, not the population of parents! "Percent of children ages 0–17 years living with mothers whose health status is excellent to poor" is the accurate way to report results — DO NOT report as "Percent of mothers...."</p> |  |   |
| <b>SPSS Code and Annotation</b>   |  |   |
| <p>RECODE S9Q08<br/>           (1 thru 2=1) (3=2) (4 thru 5=3) (else=copy) INTO ind6_1.<br/>           VAR LAB ind6_1 "Indicator 6.1: Would you say in general that (child's name)'s mother's health is excellent, very good, good, fair, or poor?".<br/>           VAL LAB ind6_1<br/>             1 "Excellent/very good"<br/>             2 'Good'<br/>             3 "Fair/poor"<br/>             6 'DK'<br/>             7 'Refused'.<br/>           MISSING VALUES ind6_1 (6,7).<br/>           FORMATS ind6_1 (f4.0).<br/>           EXE.</p>  |  |   |

| <b>INDICATOR 6.2</b>   |   |
|--|---|
| <b>Would you say in general that (child's mother's name)'s mental and emotional health is excellent, very good, good, fair, or poor?</b>   |   |
| <b>Survey Items Used</b>   | S9Q18   |
| <b>Numerators</b>  | <ul style="list-style-type: none"> <li>• Children/youth whose mother's mental and emotional health is excellent or very good</li> <li>• Children/youth whose mother's mental and emotional health is good</li> <li>• Children/youth whose mother's mental and emotional health is fair or poor</li> </ul> |
| <b>Denominator</b>   | Children/youth ages 0–17 years who live with their biological, step, foster or adoptive mothers   |
| <b>Description</b>   | Percent of children/youth ages 0–17 whose mother's mental and emotional health is excellent/very good, good, or fair/poor.  |
| <b>Notes for Data-Users</b>  |   |
| <p>When the respondent to S9Q18 was the child's mother (biological, step, foster, adoptive), she rated her own mental/emotional health status. Respondents who were not the child's mother (e.g., father or other relative) gave a proxy rating of the mother's mental and emotional health. Nationally, about 94 percent of children had a biological, step, foster, or adoptive mother in the household.</p> <p>Results for this question are weighted to reflect the population of children/youth ages 0–17 years, not the population of parents! "Percent of children/youth ages 0–17 years living with mothers whose mental health status is excellent to poor" is the accurate way to report results — DO NOT report as "Percent of mothers...."</p> |   |
| <b>SPSS Code and Annotation</b>  |   |
| <pre> RECODE S9Q18   (1 thru 2=1) (3=2) (4 thru 5=3) (else=copy) INTO ind6_2. VAR LAB ind6_2 "Indicator 6.2: Would you say in general that (child)'s mother's mental and emotional health is excellent, very good, good, fair, or poor?". VAL LAB ind6_2   1 "Excellent/very good"   2 'Good'   3 "Fair/poor"   6 'DK'   7 'Refused'. MISSING VALUES ind6_2 (6,7). FORMATS ind6_2 (f4.0). EXE. </pre>  |   |



| <b>INDICATOR 6.3 Did child/youth have a mother whose physical and mental health were BOTH excellent or very good?</b>   |   |
|---|---|
| <b>Survey Items Used</b>  | S9Q08 and S9Q18   |
| <b>Numerator</b>  | Children/youth whose mother's overall physical and mental health status is excellent or very good   |
| <b>Denominator</b>  | Children/youth ages 0–17 years who live with their biological, step, foster or adoptive mothers   |
| <b>Description</b>  | Percent of children/youth ages 0–17 whose mother's physical and mental health are BOTH excellent and very good (S9Q08 and S9Q18 both = "excellent" or "very good"). |
| <b>Notes for Data-Users</b>   |   |
| <p>When the respondent to S9Q08 or S9Q18 was the child's mother (biological, step, foster, adoptive) she rated her own physical and mental health status. Respondents who were not the child's mother (e.g., father or other relative) gave a proxy rating of the mother's physical or mental health. Nationally, about 94 percent of children had a biological, step, foster, or adoptive mother in the household.</p> <p>Results for this question are weighted to reflect the population of children/youth ages 0–17 years, not the population of parents! "Percent of children/youth ages 0–17 years living with mothers whose overall physical and mental health status is excellent or very good" is the accurate way to report results — DO NOT report as "Percent of mothers...."</p> |   |
| <b>SPSS Code and Annotation</b>   |   |
| <pre>IF (S9Q08 &lt;=5 and S9Q18 &lt;=5) Ind6_3 = 1 . IF (S9Q08 &lt;=2 and S9Q18&lt;=2 ) Ind6_3 = 2 . VAR LAB ind6_3 "Indicator 6.3: How many children/youth ages 0-17 have mothers whose physical and mental health are BOTH excellent or very good?". VAL LAB ind6_3   1 'One or both are NOT excellent/very good'   2 "Maternal physical and mental health BOTH excellent/very good". FORMATS ind6_3 (f4.0). EXE.</pre>   |   |

| <b>INDICATOR 6.4 Does anyone in the household use cigarettes, cigars, or pipe tobacco?</b>  |  |
|---|--|
| <b>Survey Items Used</b>  | S9Q11B   |
| <b>Numerator</b>  | Children/youth living in households where someone uses cigarettes, cigars, or pipe tobacco                                       |
| <b>Denominator</b>  | Children/youth ages 0–17 years   |
| <b>Description</b>  | Percent of children/youth ages 0–17 living in a household where someone uses cigarettes, cigars, or pipe tobacco (S9Q11B = Yes). |
| <b>Notes for Data-Users</b>   |  |
| Missing data for S9Q11B includes 13 percent of respondents (n = 13,277) who did not answer the question because it was added to the NSCH interview part way through the data collection process.  |  |
| <b>SPSS Code and Annotation</b>   |  |
| <p>RECODE S9Q11B<br/>                     (else=copy) INTO ind6_4.<br/>                     VAR LAB ind6_4 "Indicator 6.4: Does anyone in the household use cigarettes, cigars, or pipe tobacco?".<br/>                     VAL LAB ind6_4<br/>                     0 'No one in household smokes tobacco'<br/>                     1 'Someone in household smokes tobacco'<br/>                     6 'DK'<br/>                     7 'Refused'.<br/>                     MISSING VALUES ind6_4 (6,7).<br/>                     FORMATS ind6_4 (f4.0).<br/>                     EXE.</p> |  |

| <b>INDICATOR 6.5</b>   |  |
|--|--|
| <b>How many children/youth live in “working poor” households — parents employed full-time with incomes less than 100 percent of the Federal Poverty Level (FPL)?</b>   |  |
| <b>Survey Items Used</b>   | S11Q08; C11Q01–W9Q12A  |
| <b>Numerator</b>   | Children/youth living in “working poor” households   |
| <b>Denominator</b>   | Children/youth ages 0–17 years   |
| <b>Description</b>   | Percent of children/youth ages 0–17 living in “working poor” households (Parents employed full-time with incomes less than 100 percent of the FPL) |
| <b>Notes for Data-Users</b>  |  |
| “Working poor” is defined as a household in which one or both parents are employed full-time AND household income is below the FPL.  |  |
| <b>SPSS Code and Annotation</b>  |  |
| <p>IF (POVERTY_LEVELR &gt;0 and POVERTY_LEVELR &lt;=8) and (S11Q08=0 or S11Q08=1) ind6_5=1.<br/>                     IF (POVERTY_LEVELR=1 and S11Q08=1) ind6_5=2.<br/>                     VAR LAB ind6_5 "Indicator 6.5: How many children/youth live in 'working poor' households -- parents employed full-time with income less than Federal Poverty Level (FPL)?".<br/>                     VAL LAB ind6_5<br/>                     1 "Does not live in 'working poor' HH"<br/>                     2 "Lives in 'working poor' household".<br/>                     FORMATS ind6_5 (f4.0).<br/>                     EXE.</p> |  |

|   |   |   |
|---|---|---|
| <b>INDICATOR 6.6</b>  |   | <b>During the past week, how many times did you or any family member take (child's name) on any kind of outing, such as to the park, library, zoo, shopping, church, restaurants, or family gatherings?</b> |
| <b>Survey Items Used</b>  | S8Q01   |   |
| <b>Numerators</b>   | <ul style="list-style-type: none"> <li>• Young children who went on no family outings the previous week</li> <li>• Young children who went on 1–3 family outings the previous week</li> <li>• Young children who went on 4–6 family outings the previous week</li> <li>• Young children who went on 7 or more family outings the previous week</li> </ul> |   |
| <b>Denominator</b>  | Children ages 0–5 years   |   |
| <b>Description</b>  | Percent of children ages 0–5 who went on outings with a family member no times, 1–3 times, 4–6 times, or 7 or more times during the past week.  |   |
| <b>Notes for Data-Users</b>   |   |   |
|   |   |   |
| <b>SPSS Code and Annotation</b>   |   |   |
| <p>RECODE S8Q01R<br/>         (0=0) (1 thru 3=1) (4 thru 6=2) (7 thru 20=3) (else=copy) INTO ind6_6.<br/>         VAR LAB ind6_6 "Indicator 6.6: During the past week, how many times did you or any family member take (child's name) on any kind of outing, such as to the park, library, zoo, shopping, church, restaurants, or family gatherings? (S8Q01 -- ages 0-5 only)".<br/>         VAL LAB ind6_6<br/>         0 'None'<br/>         1 '1 - 3 times'<br/>         2 '4 - 6 times'<br/>         3 '7 or more times'<br/>         96 'DK'<br/>         97 'Refused'.<br/>         MISSING VALUES ind6_6 (96,97).<br/>         FORMATS ind6_6 (f4.0).<br/>         EXE.</p> |   |   |

| <b>INDICATOR 6.7</b>  |   | <b>During the past week, how many days did you or other family members read stories to (child's name)?</b> |
|---|---|--|
| <b>Survey Items Used</b>  | S6Q62   |  |
| <b>Numerators</b>   | <ul style="list-style-type: none"> <li>• Young children who not read aloud to during the past week</li> <li>• Young children who were read aloud to on 1–2 days during the past week</li> <li>• Young children who were read aloud to on 3–4 days during the past week</li> <li>• Young children who were read aloud to on 5–6 days during the past week</li> <li>• Young children who were read aloud to every day during the past week</li> </ul> |  |
| <b>Denominator</b>  | Children ages 0–5 years   |  |
| <b>Description</b>  | Percent of children ages 0–5 who were read aloud to by a family member on no days, 1–2 days, 3–4 days, 5–6 days, or on everyday during the past week.   |  |
| <b>Notes for Data-Users</b>   |   |  |
| <b>SPSS Code and Annotation</b>   |   |  |
| <p>RECODE S6Q62<br/>           (0=0) (1 thru 2=1) (3 thru 4=2) (5 thru 6=3) (7=4) (else=copy) INTO ind6_7.<br/>           VAR LAB ind6_7 "Indicator 6.7: During the past week, how many days did you or other family members read stories to (child's name)? (S6Q62 -- ages 0-5 only)".<br/>           VAL LAB ind6_7<br/>           0 'No days'<br/>           1 '1 or 2 days'<br/>           2 '3 or 4days'<br/>           3 '5 or 6 days'<br/>           4 'Every day'<br/>           96 'DK'<br/>           97 'Refused'.<br/>           MISSING VALUES ind6_7 (96,97).<br/>           FORMATS ind6_7 (f4.0).<br/>           EXE.</p> |   |  |

| <b>INDICATOR 6.8</b>  |  |
|---|--|
| <b>During the past week, on how many days did all the family members who live in the household eat a meal together?</b>   |  |
| <b>Survey Items Used</b>  | S8Q03  |
| <b>Numerators</b>   | <ul style="list-style-type: none"> <li>• Children/youth whose family did not eat together during the past week</li> <li>• Children/youth whose family ate together on 1–3 days during the past week</li> <li>• Children/youth whose family ate together on 4–6 days during the past week</li> <li>• Children/youth whose family ate together every day during the past week</li> </ul> |
| <b>Denominator</b>  | Children/youth ages 0–17 years   |
| <b>Description</b>  | Percent of children/youth ages 0–17 live in a household where all of the family members ate a meal together on no days, 1–3 days, 4–6 days, or everyday during the past week.  |
| <b>Notes for Data-Users</b>   |  |
| <b>SPSS Code and Annotation</b>   |  |
| <p>RECODE S8Q03<br/>           (0=0) (1 thru 3=1) (4 thru 6=2) (7=3) (else=copy) INTO ind6_8.<br/>           VAR LAB ind6_8 "Indicator 6.8: During the past week, on how many days did all the family members who live in the household eat a meal together? (S8Q03)".<br/>           VAL LAB ind6_8<br/>           0 'No days'<br/>           1 '1 - 3 days'<br/>           2 '4 - 6 days'<br/>           3 'Every day'<br/>           4 'Every day'<br/>           96 'DK'<br/>           97 'Refused'.<br/>           MISSING VALUES ind6_8 (96,97).<br/>           FORMATS ind6_8 (f4.0).<br/>           EXE.</p> |  |

| <b>INDICATOR 6.9</b>   |  | <b>During the past week, on how many nights did (child's name) get enough sleep for a child/youth his/her age?</b> |
|--|--|--|
| <b>Survey Items Used</b>   | S7Q20  |  |
| <b>Numerators</b>  | <ul style="list-style-type: none"> <li>• Children/youth who did not get enough sleep on any night during the past week</li> <li>• Children/youth who got enough sleep on 1–3 nights during the past week</li> <li>• Children/youth who got enough sleep on 4–6 nights during the past week</li> <li>• Children/youth who got enough sleep on every night during the past week</li> </ul> |  |
| <b>Denominator</b>   | Children/youth ages 6–17 years   |  |
| <b>Description</b>   | Percent of children/youth ages 6–17 who got enough sleep for a child of his/her age on no nights, 1–3 nights, 4–6 nights, or every night during the past week.   |  |
| <b>Notes for Data-Users</b>  |  |  |
| <b>SPSS Code and Annotation</b>  |  |  |
| <p>RECODE S7Q20<br/>           (0=0) (1 thru 3=1) (4 thru 6=2) (7=3) (else=copy) INTO ind6_9.<br/>           VAR LAB ind6_9 "Indicator 6.9: During the past week, on how many nights did (child's name) get enough sleep for a child his/her age? (ages 6-17)".</p> <p>VAL LAB ind6_9<br/>           0 'No nights'<br/>           1 '1 - 3 nights'<br/>           2 '4 - 6 nights'<br/>           3 'Every day'<br/>           4 'Every day'<br/>           96 'DK'<br/>           97 'Refused'.</p> <p>MISSING VALUES ind6_9 (96,97).<br/>           FORMATS ind6_9 (f4.0).<br/>           EXE.</p> |  |  |

| <b>INDICATOR 6.10</b>   |  | <b>On an average school day, about how many hours does (child's name) usually watch TV, watch videos, or play video games?</b> |
|---|--|--|
| <b>Survey Items Used</b>  | S7Q28  |  |
| <b>Numerators</b>   | <ul style="list-style-type: none"> <li>• Children/youth who do not spend time using TV/video on school days</li> <li>• Children/youth who spend an hour or less using TV/video on school days</li> <li>• Children/youth who spend 2–3 hours using TV/video on school days</li> <li>• Children/youth who spend 4 or more using TV/video on school days</li> </ul> |  |
| <b>Denominator</b>  | Children/youth ages 6–17 years   |  |
| <b>Description</b>  | Percent of children/youth ages 6–17 who usually watch TV, watch videos, or play video games for 0 hours, 1 hour or less, 2–3 hours, or 4 hours or more on an average school day.   |  |
| <b>Notes for Data-Users</b>   |  |  |
| Nationally, less than 0.5 percent of children/youth ages 6–17 years did not have a TV in the home.  |  |  |
| <b>SPSS Code and Annotation</b>   |  |  |
| <p>RECODE S7Q28<br/>           (0,26=0) (1,25=1) (2,3=2) (4 thru 24=3) (else=copy) INTO ind6_10.<br/>           VAR LAB ind6_10 "Indicator 6.10: On an average school day, about how many hours does (child's name) usually watch TV, watch videos, or play video games? (S7Q28 -- ages 6-17 only)".<br/>           VAL LAB ind6_10<br/>           0 'None'<br/>           1 '1 hour or less'<br/>           2 '2 - 3 hours'<br/>           3 '4 hours or more'<br/>           96 'DK'<br/>           97 'Refused'.<br/>           MISSING VALUES ind6_10 (96,97).<br/>           FORMATS ind6_10 (f4.0).<br/>           EXE.</p> |  |  |



|   |   |   |
|---|---|---|
| <b>INDICATOR 6.11</b>   |   | <b>Sometimes children spend time caring for themselves at home without an adult responsible for them. During the past week, did (child's name) spend time caring for himself/herself for even a small amount of time?</b> |
| <b>Survey Items Used</b>  | S7Q15   |   |
| <b>Numerator</b>  | Children who stayed alone at home for any length of time during past week   |   |
| <b>Denominator</b>  | Children ages 6–11 years  |   |
| <b>Description</b>  | Percent of children ages 6–11 who spent time caring for himself/herself for even a small amount of time during the past week (S7Q15 = Yes). |   |
| <b>Notes for Data–Users</b>   |   |   |
|   |   |   |
| <b>SPSS Code and Annotation</b>   |   |   |
| <p>RECODE S7Q15<br/>           (0=1) (1=2) (else=copy) INTO ind6_11.<br/>           VAR LAB ind6_11 "Indicator 6.11: Sometimes children spend time caring for themselves at home without an adult responsible for them. During the past week, did (child's name) spend time caring for himself/herself for even a small amount of time? (S7Q15 -- ages 6-11 only)".<br/>           VAL LAB ind6_11<br/>             1 'No'<br/>             2 'Yes'<br/>             6 'DK'<br/>             7 'Refused'.<br/>           MISSING VALUES ind6_11 (6,7).<br/>           FORMATS ind6_11 (f4.0).<br/>           EXE.</p> |   |   |

| <b>INDICATOR 6.12</b>   |   | <b>Did child/youth have parents who often felt aggravated with them during the past month?</b> |
|---|---|--|
| <b>Survey Items Used</b>  | S8Q07, S8Q08, S8Q10   |  |
| <b>Numerator</b>  | Children/youth whose parents report often feeling aggravated with child during past month                     |  |
| <b>Denominator</b>  | Children/youth ages 0–17 years  |  |
| <b>Description</b>  | Percent of children/youth ages 0–17 living with parents who report often feeling aggravated with their child. |  |
| <b>Notes for Data-Users</b>   |   |  |
| <p>“Often feeling aggravated” is parents who reported that during the last month, on average, they usually or always felt their child was much harder to care for than other children (S8Q07), or usually or always were bothered a lot by their child’s behavior (S8Q08), or usually or always felt angry with their child (S8Q10).</p> <p>S8Q07 – S8Q10 comprise the Aggravation in Parenting Scale, which was derived from the Parental Stress Index and the Parental Attitudes about Childrearing Scale. It has been used previously in the Panel Survey of Income Dynamics, the Survey of Income and Program Participation, and the Survey of Program Dynamics. Analysts should note that prior research revealed that the Aggravation in Parenting Scale has limited cultural validity among Spanish-speaking Latino parents. Removal of a single question (S8Q09) from the scale removed the measure for this group.</p> <p>See <a href="http://www.cdc.gov/nchs/data/slait/NSCH_Methodology_Report.pdf">www.cdc.gov/nchs/data/slait/NSCH_Methodology_Report.pdf</a> for more information.</p> |   |  |
| <b>SPSS Code and Annotation</b>   |   |  |
| Not currently available (December 2008); for information contact CAHMI staff at <a href="mailto:CAHMI@ohsu.edu">CAHMI@ohsu.edu</a> .  |   |  |

|   |  |   |
|---|--|---|
| <b>INDICATOR 6.13</b>   |  | <b>During the past month, how many times have you had to make different arrangements for child care at the last minute because your usual plans changed due to circumstances beyond your control?</b> |
| <b>Survey Items Used</b>  | S6Q53  |   |
| <b>Numerators</b>   | <ul style="list-style-type: none"> <li>• Young children whose parents did not need to make alternate child care arrangements during the past month</li> <li>• Young children whose parents had to make alternate child care arrangements one time during the past month</li> <li>• Young children whose parents had to make alternate child care arrangements 2–3 times during the past month</li> <li>• Young children whose parents had to make alternate child care arrangements 4 or more times during the past month</li> </ul> |   |
| <b>Denominator</b>  | Children ages 0–5 years  |   |
| <b>Description</b>  | Percent of children ages 0–5 whose parent’s made different child care arrangements at the last minute no times, one time, 2–3 times, or 4 or more times during the past month.   |   |
| <b>Notes for Data-Users</b>   |  |   |
| <b>SPSS Code and Annotation</b>   |  |   |
| <p>RECODE S6Q53<br/>         (0=0) (1=1) (2,3=2) (4 thru 100=3) (else=copy) INTO ind6_13.<br/>         VAR LAB ind6_13 "Indicator 6.13: During the past month, how many times have you had to make different arrangements for child care at the last minute because your usual plans changed due to circumstances beyond your control? (S6Q53 - ages 0-5)".<br/>         VAL LAB ind6_13<br/>         0 'None'<br/>         1 '1 time'<br/>         2 '2 - 3 times'<br/>         3 '4 or more times'<br/>         995 'Missing'<br/>         996 'DK'<br/>         997 'Refused'.<br/>         MISSING VALUES ind6_13 (995,996,997).<br/>         FORMATS ind6_13 (f4.0).<br/>         EXE.</p> |  |   |

|   |   |  |
|---|---|--|
| <b>INDICATOR 6.14</b>   |   | <b>During the past 12 months, did you or anyone in the family have to quit, not take, or greatly change your job because of problems with child care for (child's name)?</b> |
| <b>Survey Items Used</b>  | S6Q54   |  |
| <b>Numerator</b>  | Young children living with one or more family members whose employment was affected by problems with child care during the past 12 months                           |  |
| <b>Denominator</b>  | Children ages 0–5 years   |  |
| <b>Description</b>  | Percent of children ages 0–5 whose family members quit, did not take, or greatly changed a job due to a child care problem during the past 12 months (S6Q54 = Yes). |  |
| <b>Notes for Data-Users</b>   |   |  |
|   |   |  |
| <b>SPSS Code and Annotation</b>   |   |  |
| <pre> RECODE S6Q54   (0=1) (1=2) (else=copy) INTO ind6_14. VAR LAB ind6_14 "Indicator 6.14: During the past 12 months, did you or anyone in the family have to quit, not take, or greatly change your job because of problems with child care for (child's name)? (S6Q54 -- ages 0-5 only)". VAL LAB ind6_14   1 'No'   2 'Yes'   6 'DK'   7 'Refused'. MISSING VALUES ind6_14 (6,7). FORMATS ind6_14 (f4.0). EXE. </pre> |   |  |

| <b>INDICATOR 6.15</b>  |   |
|--|---|
| <b>Did child have parents who either had to make different child care arrangements in the past month or employment-related changes due to child care reasons in the past year or BOTH?</b>   |   |
| <b>Survey Items Used</b>   | S6Q53 and S6Q54   |
| <b>Numerator</b>   | Young children whose parents reported child care issues   |
| <b>Denominator</b>   | Children ages 0–5 years   |
| <b>Interpretation</b>  | Percent of children ages 0–5 years with one or more family members who either quit, did not take, or greatly changes a job because of problems with child care AND/OR children whose family had to make different child care plans at the last minute (S6Q54 = Yes AND/OR S6Q53 = Yes). |
| <b>Notes for Data-Users</b>  |   |
| <p>This indicator combines questions with different reference periods. Question S6Q53 asks about the frequency of last minute changes in child care plans during the past month. Question S6Q54 asks about employment-related issues during the past 12 months due to child care problems.</p>   |   |
| <b>SPSS Code and Annotation</b>  |   |
| <pre>DO IF (S6Q53&gt;0 and S6Q53&lt;995) or S6Q54=1. COMPUTE ind6_15=1. END IF. DO IF S6Q53=0 and S6Q54=0. COMPUTE ind6_15=0. END IF. DO IF(S6Q53&gt;=995 and S6Q54&gt;=6) or (S6Q54=0 and S6Q53&gt;=995). COMPUTE ind6_15=999. END IF. VAR LAB ind6_15 "Indicator 6.15: How many children (ages 0-5) have parents who either had to make different child care arrangements in the past month or employment-related changes due to child care reasons in the past year or BOTH? (derived)". VAL LAB ind6_15   0 'No child care issues reported'   1 'One or more child care issues reported'   999 'DK or Refused'. MISSING VALUES ind6_15 (999). FORMATS ind6_15 (f4.0). EXECUTE.</pre> |   |

| <b>INDICATOR 6.16</b>   |  |
|---|--|
| <b>Did child regularly attend non-parental child care such as a child care center, family-based center, in-home nanny, preschool, etc. during the past month?</b>   |  |
| <b>Survey Items Used</b>  | S6Q48 – S6Q52  |
| <b>Numerator</b>  | Young children who regularly attend non-parental child care  |
| <b>Denominator</b>  | Children ages 0–5 years  |
| <b>Interpretation</b>   | Percent of children ages 0–5 years who regularly attended non-parental child care in the past month. |
| <b>Notes for Data-Users</b>   |  |
| <p>“Non-parental child care” is defined as one or more of the following: child care center, family-based child care center, non-parental child care in home, nursery school, preschool, kindergarten, or Head or Early Start. “Regular attendance” is defined as attending non-parental child care one or more times per week during the month prior to the survey.</p>   |  |
| <b>SPSS Code and Annotation</b>   |  |
| <p>MISSING VALUES S6Q48, S6Q49, S6Q50, S6Q51, S6Q52 (6,7).<br/>           COMPUTE nonparental_count = sum.1 (S6Q48, S6Q49, S6Q50, S6Q51, S6Q52).<br/>           EXECUTE.</p> <p>RECODE<br/>           nonparental_count<br/>           (0=0) (1 thru Highest=1) INTO ind6_16.<br/>           VAR LAB ind6_16 "Indicator 6.16: How many children (ages 0-5) regularly attended non-parental child care"+<br/>           " such as a child care center, family-based center, in-home nanny, preschool, etc. during the past month?".<br/>           VAL LAB ind6_16<br/>           0 "No non-parental child care"<br/>           1 "Yes, had non-parental child care".<br/>           FORMATS ind6_16 (f4.0).<br/>           EXECUTE.</p> |  |

| <b>INDICATOR 7.1</b>  |  | <b>How many children/youth live in supportive neighborhoods?</b> |
|---|--|--|
| <b>Survey Items Used</b>  | S10Q01 – S10Q03; S10Q05  |  |
| <b>Numerator</b>  | Children/youth living in supportive neighborhoods  |  |
| <b>Denominator</b>  | Children/youth ages 0–17 years   |  |
| <b>Interpretation</b>   | Percent of children/youth ages 0–17 who live in supportive neighborhoods (average score of less than 2.25 points across S10Q01 – S10Q03 and S10Q05). |  |
| <b>Notes for Data-Users</b>   |  |  |
| <p>S10Q01, S10Q02, S10Q03, and S10Q05 consider parents' perceived level of neighborhood social capital, focusing specifically on positive aspects of social capital relating to children. This concept, alternatively called social support, is similar to the concept of "social cohesion and trust," which is related to variations in violence among inner-city neighborhoods. These questions were originally developed for the Longitudinal Studies of Child Abuse and Neglect and have also been used for the Survey of Income and Program Participation.</p> <p>See <a href="http://www.cdc.gov/nchs/data/slait/NSCH_Methodology_Report.pdf">www.cdc.gov/nchs/data/slait/NSCH_Methodology_Report.pdf</a> for more information.</p> <p>Scores are calculated for all children with valid responses to at least 3 of the 4 scale items. Response scoring: 1 = Definitely agree 2 = Somewhat agree 3 = Somewhat disagree 4 = Definitely disagree. Cutoff score of less than 2.25 indicates one or fewer responses of "somewhat disagree" or "definitely disagree" across scale items.</p> |  |  |
| <b>SPSS Code and Annotation</b>   |  |  |
| <pre> MISSING VALUES S10Q01 S10Q02 S10Q03 S10Q05 (6,7). COMPUTE supp_nbhd= MEAN.3(S10Q01, S10Q02, S10Q03, S10Q05) . VAR LAB supp_nbhd 'Supportive neighborhood mean score on 3 of 4 component variables'. RECODE supp_nbhd (0 thru 2.20=1) (2.25 thru 4.00=0) INTO ind7_1. VAR LAB ind7_1 "Indicator 7.1: How many children/youth (ages 0-17) live in supportive neighborhoods?". VAL LAB ind7_1 0 'Does not live in a supportive neighborhood' 1 'Lives in a supportive neighborhood'. MISSING VALUES ind7_1 (999). FORMATS ind7_1 (f4.0). EXECUTE. </pre>   |  |  |

| <b>INDICATOR 7.2</b>  |   | <b>How often do you feel (child's name) is safe in your community or neighborhood?</b> |
|---|---|--|
| <b>Survey Items Used</b>  | S10Q06  |  |
| <b>Numerators</b>   | <ul style="list-style-type: none"> <li>• Children/youth whose parents feel they are usually or always safe in their neighborhood</li> <li>• Children/youth whose parents feel they are sometimes safe in their neighborhood</li> <li>• Children/youth whose parents feel they are never safe in their neighborhood</li> </ul> |  |
| <b>Denominator</b>  | Children/youth ages 0–17 years  |  |
| <b>Interpretation</b>   | Percent of children/youth ages 0–17 whose parents feel they are usually or always, sometimes, or never safe in their community or neighborhood.   |  |
| <b>Notes for Data-Users</b>   |   |  |
| <p>Results for this question are weighted to reflect the population of children/youth ages 0–17 years, not the population of parents or family members! “Percent of children/youth ages 0–17 years whose parents feel that the child is always safe in their community or neighborhood” is the accurate way to report results — DO NOT report as “Percent of parents....”</p> |   |  |
| <b>SPSS Code and Annotation</b>   |   |  |
| <pre> RECODE S10Q06 (1=1) (2=2) (3 thru 4=3) (ELSE=COPY) INTO ind7_2. VAR LAB ind7_2 "Indicator 7.2: How often do you feel (child's name) is safe in your community or neighborhood?". VAL LAB ind7_2 1 'Never' 2 'Sometimes' 3 'Usually or always' 6 'DK' 7 'Refused'. MISSING VALUES ind7_2 (6,7). FORMATS ind7_2 (f4.0). EXECUTE. </pre>                                   |   |  |



| <b>INDICATOR 7.3</b>  |  | <b>How often do you feel (child's name) is safe at school?</b> |
|---|--|--|
| <b>Survey Items Used</b>  | S10Q07   |  |
| <b>Numerators</b>   | <ul style="list-style-type: none"> <li>• Children/youth whose parents feel they are usually or always safe at school</li> <li>• Children/youth whose parents feel they are sometimes at school</li> <li>• Children/youth whose parents feel they are never safe at school</li> </ul> |  |
| <b>Denominator</b>  | Children/youth ages 6–17 years   |  |
| <b>Interpretation</b>   | Percent of children/youth ages 0–17 whose parents feel they are usually or always, sometimes, or never safe at school.   |  |
| <b>Notes for Data-Users</b>   |  |  |
| <p>Results for this question are weighted to reflect the population of children ages 6–17 years, not the population of parents or family members. “Percent of children ages 6–17 years whose parents feel that the child is always safe at school” is the accurate way to report results — DO NOT report as “Percent of parents...”</p> |  |  |
| <b>SPSS Code and Annotation</b>   |  |  |
| <pre> RECODE S10Q07 (1=1) (2=2) (3 thru 4=3) (ELSE=COPY) INTO ind7_3. VAR LAB ind7_3 "Indicator 7.3: How often do you feel (child's name) is safe at school?". VAL LAB ind7_3   1 'Never'   2 'Sometimes'   3 'Usually or always'   6 'DK'   7 'Refused'. MISSING VALUES ind7_3 (6,7). FORMATS ind7_3 (f4.0). EXECUTE. </pre>           |  |  |

| <b>Gender</b>  |  | <b>How many males and females are in the 0- to 17-year-old population?</b> |
|--|--|--|
| <b>Survey Items Used</b>   | S1Q01  |  |
| <b>Numerators</b>  | <ul style="list-style-type: none"> <li>• Male</li> <li>• Female</li> </ul> |  |
| <b>Denominator</b>   | Children/youth ages 0–17 years   |  |
| <b>Interpretation</b>  | Percent of children/youth ages 0–17 who are male or female.                |  |
| <b>Notes for Data-Users</b>  |  |  |
|  |  |  |
| <b>SPSS Code and Annotation</b>  |  |  |
| <pre> COMPUTE sex = S1Q01 . VAR LAB sex "How many males and females are in the 0-17 year old population? (S1Q01)". VAL LAB sex   1 'Male'   2 'Female'   6 'DK'   7 'Refused'. MISSING VALUES sex (6,7). FORMATS sex (f4.0). EXECUTE. </pre> |  |  |

| <b>Age Group (3)</b>   |  | <b>How many children/youth in the 0- to 17-year-old population are in each of three age groups?</b> |
|--|--|---|
| <b>Survey Items Used</b>   | Initial sampling questions   |   |
| <b>Numerators</b>  | <ul style="list-style-type: none"> <li>• 0–5 years old</li> <li>• 6–11 years old</li> <li>• 12–17 years old</li> </ul> |   |
| <b>Denominator</b>   | Children/youth ages 0–17 years   |   |
| <b>Interpretation</b>  | Percent of children/youth who are 0–5, 6–11, or 12–17.   |   |
| <b>Notes for Data-Users</b>  |  |   |
|  |  |   |
| <b>SPSS Code and Annotation</b>  |  |   |
| <pre> RECODE AGEYR_CHILD   (0 thru 5=1) (6 thru 11=2) (12 thru 17=3) (else=copy) INTO age_3. VAR LAB age_3 "How many children/youth of different ages are in the 0-17 year old population? (3 age groups)". VAL LAB age_3   1 '0 - 5 yrs old'   2 '6 - 11 yrs old'   3 '12 - 17 yrs old'   6 'DK'   7 'Refused'. MISSING VALUES age_3 (6,7). FORMATS age_3 (f4.0). EXECUTE. </pre> |  |   |

| <b>Age Group (5)</b>   |  | <b>How many children/youth in the 0- to 17-year-old population are in each of five age groups?</b> |
|--|--|--|
| <b>Survey Items Used</b>   | Initial sampling questions   |  |
| <b>Numerators</b>  | <ul style="list-style-type: none"> <li>• 0–3 years old</li> <li>• 4–7 years old</li> <li>• 8–11 years old</li> <li>• 12–14 years old</li> <li>• 15–17 years old</li> </ul> |  |
| <b>Denominator</b>   | Children/youth ages 0–17 years   |  |
| <b>Interpretation</b>  | Percent of children/youth who are 0–3, 4–7, 8–11, 12–14, or 15–17.   |  |
| <b>Notes for Data-Users</b>  |  |  |
|  |  |  |
| <b>SPSS Code and Annotation</b>  |  |  |
| <pre> RECODE AGEYR_CHILD (0 thru 3=1) (4 thru 7=2) (8 thru 11=3) (12 thru 14=4) (15 thru 17=5) (else=copy) INTO age_5. VAR LAB age_5 "How many children/youth of different ages are in the 0-17 year old population? (5 age groups)". VAL LAB age_5 1 '0 - 3 yrs old' 2 '4 - 7yrs old' 3 '8 - 11 yrs old' 4 '12 - 14 yrs old' 5 '15 -17 yrs old' 6 'DK' 7 'Refused'. MISSING VALUES age_5 (6,7). FORMATS age_5 (f4.0). EXECUTE. </pre> |  |  |

| <b>Race and Ethnicity</b>  | <b>How many children of different races or Hispanic ethnicity are in the 0- to 17-year-old population?</b>   |
|--|--|
| <b>Survey Items Used</b>   | S11Q01; S11Q02X01 – S11Q02X07  |
| <b>Numerators</b>  | <ul style="list-style-type: none"> <li>• Hispanic</li> <li>• White, non-Hispanic</li> <li>• Black, non-Hispanic</li> <li>• Multiracial, non-Hispanic</li> <li>• Other, non-Hispanic</li> </ul> |
| <b>Denominator</b>   | Children/youth ages 0–17 years   |
| <b>Interpretation</b>  | Percent of children/youth ages 0–17 who are Hispanic/Latino, or non-Hispanic and white, black, multiracial, or of another race.  |
| <b>Notes for Data Users</b>  |  |
| <p>Children/youth reporting Hispanic or Latino ethnicity (S11Q01 = Yes) are grouped as HISPANIC, regardless of race. Non-Hispanic children are grouped by race based on responses to S11Q02X01 – S11Q02X07. Non-Hispanic children reporting more than one race category are grouped as “MULTI-RACE”. At the national level, non-Hispanic children reporting only one race category of Asian, American Indian, Alaska Native, Native Hawaiian, or Pacific Islander are combined into a single group called OTHER. This is done because only a handful of states meet the NCHS’ confidentiality standards for releasing data on these minority groups to the public. NCHS only includes individual level data for one of these minority groups in the publicly available data files when a group comprises 5 percent or more of the total child population in a state. This standard is in place to protect against the remote chance of an individual child inadvertently being identified in states with relatively few children from these minority groups in their populations. For more information, see <a href="http://www.cdc.gov/nchs/data/slait/NSCH_Methodology_Report.pdf">www.cdc.gov/nchs/data/slait/NSCH_Methodology_Report.pdf</a></p> |  |
| <b>SPSS Code and Annotation</b>  |  |
| <pre> RECODE RACER   (1=2) (2=3) (3=4) (4=5) (else=copy) INTO race_5. DO IF S11Q01 = 1.   COMPUTE race_5 = 1. END IF. VAR LAB race_5 "How many children/youth of different races or Hispanic ethnicity are in the 0-17 year old population?". VAL LAB race_5   1 'Hispanic'   2 'White non-Hispanic'   3 'Black non-Hispanic'   4 'Multiracial non-Hispanic'   5 'Other non-Hispanic'   6 'DK'   7 'Refused'. MISSING VALUES race_5 (6,7). FORMATS race_5 (f4.0). EXECUTE. </pre>  |  |

| <b>Special Health Care Needs Status</b>   |   | <b>How many children/youth have special health care needs?</b> |
|---|---|--|
| <b>Survey Items Used</b>  | S2Q04 – S2Q17   |  |
| <b>Numerator</b>  | Children/youth with qualifying responses on one or more of the five CSHCN Screener criteria                       |  |
| <b>Denominator</b>  | Children/youth ages 0–17 years  |  |
| <b>Interpretation</b>   | Percent of children/youth ages 0–17 with qualifying responses on one or more of the five CSHCN Screener criteria. |  |
| <b>Notes for Data Users</b>   |   |  |
| <p>Questions S2Q04 – S2Q17 comprise the CSHCN Screener, a validated screening instrument for identifying children with special health care needs as defined by the federal Maternal and Child Health Bureau. The CSHCN Screener asks whether a child currently experiences any of five different health consequences, and if so, whether that specific health consequence is due to a medical, behavioral, or other type of health condition that has lasted or is expected to last 12 months or longer. A child must have affirmative responses on all 3 parts (or 2 parts in the case of screening question for the ongoing emotional, developmental, or behavioral conditions criteria) of a screening question in order to qualify on that particular screening criteria.</p> <p>For more information on the development, testing, and scoring of the CSHCN Screener, email CAHMI@ohsu.edu. For more information on use of the CSHCN screener in the 2003 NSCH, see <a href="http://www.cdc.gov/nchs/data/slaits/NSCH_Methodology_Report.pdf">www.cdc.gov/nchs/data/slaits/NSCH_Methodology_Report.pdf</a>.</p> <p>Step 1 in the code below creates yes-no variables identifying children with qualifying responses to each of the five different CSHCN Screener criteria. Step 2 creates the summary variable that indicates whether or not the child/youth has special health care needs based on having qualifying responses to one or more of the five screening criteria. Step 3 of the code creates two optional analytic variables that can be used to subclassify CSHCN into mutually exclusive groups based on number and type of special health care needs.</p> |   |  |
| <b>SPSS Code and Annotation</b>   |   |  |
| <p>**SCORING the CSHCN Screener using NSCH variable names</p> <p>** STEP 1: Create interim variables that identify children with qualifying responses on each of the 5 different CSHCN Screener criteria. These five variables are also valuable analytic tools for further studying the group of children identified by the CSHCN Screener</p> <pre> COMPUTE rxmeds = 0. IF ((S2Q04 = 1) and (S2Q05 = 1) and (S2Q06 = 1)) rxmeds = rxmeds +1. EXECUTE . VARIABLE LABEL rxmeds "Qualified on rx med use?". VALUE LABEL rxmeds 0 'No' 1 'Yes'. </pre>  |   |  |

```

COMPUTE serve = 0.
IF ((S2Q07 = 1) and (S2Q08 = 1) and (S2Q09 = 1)) serve = serve + 1.
EXECUTE.
VARIABLE LABEL serve 'Qualified on service use?'.
VALUE LABEL serve 0 'No' 1 'Yes'.

```

```

COMPUTE func = 0.
IF ((S2Q10 = 1) and (S2Q11 = 1) and (S2Q12 = 1)) func = func + 1.
EXECUTE.
VARIABLE LABEL func 'Qualified on functional limits?'.
VALUE LABEL func 0 'No' 1 'Yes'.

```

```

COMPUTE therapy = 0.
IF ((S2Q13 = 1) and (S2Q14 = 1) and (S2Q15 = 1)) therapy = therapy + 1.
EXECUTE.
VARIABLE LABEL therapy 'Qualified on use of special therapies?'.
VALUE LABEL therapy 0 'No' 1 'Yes'.

```

```

COMPUTE mhealth = 0.
IF ((S2Q16 = 1) and (S2Q17 = 1)) mhealth = mhealth + 1.
EXECUTE.
VARIABLE LABEL mhealth 'Qualified on use of mental health services?'.
VALUE LABEL mhealth 0 'No' 1 'Yes'.

```

\*\* STEP 2: Compute summary CSHCN Screener score identifying children with 1 or more qualifying responses to any of the 5 screening criteria

```

COMPUTE metlwi = 0.
IF (rxmeds = 1) or (serve = 1) or (func = 1) or (therapy = 1) or (mhealth = 1) metlwi = 1.
EXECUTE.
VARIABLE LABEL metlwi 'Results for CSHCN screener'.
VALUE LABEL metlwi 1 'CSHCN' 0 'Non-CSHCN'.

```

\*\* STEP 3: Compute variables useful for sub-classifying the CSHCN Group based on quantitative and qualitative schemes

\*\*Mutually exclusive quantitative subgrouping of special health care need types -- based on number of qualifying screening criteria

```

COMPUTE lwiscrn = sum (rxmeds, serve, func, therapy, mhealth).
EXECUTE.

```

```

VARIABLE LABELS lwiscrn "CSHCN grouped according to number of qualifying screener answers".
VALUE LABELS lwiscrn

```

- 0 "Non-CSHCN"
- 1 "One qualifying answer"
- 2 "Two qualifying answers"
- 3 "Three qualifying answers"
- 4 "Four qualifying answers"
- 5 "Five qualifying answers".

\*\*Mutually exclusive qualitative subgrouping of special health care need types -- based on type of qualifying screening criteria

COMPUTE def\_4 = 0.

IF (func = 0) and ((rxmeds = 1)) and ((serve = 0) or (therapy = 0) or (mhealth = 0)) def\_4 = 1.

IF (func = 0) and ((rxmeds = 0)) and ((serve = 1) or (therapy = 1) or (mhealth = 1)) def\_4 = 2.

IF (func = 0) and ((rxmeds = 1)) and ((serve = 1) or (therapy = 1) or (mhealth = 1)) def\_4 = 3.

IF ((func = 1)) and ((serve = 1) or (therapy = 1) or (rxmeds = 1) or (mhealth = 1)) def\_4 = 4.

IF ((func = 1)) and ((serve = 0) or (therapy = 0) or (rxmeds = 0) or (mhealth = 0)) def\_4 = 4.

EXECUTE.

MISSING VALUES def\_4 ("0.").

VARIABLE LABELS def\_4 "CSHCN grouped according to type of qualifying criteria".

VALUE LABELS def\_4

0 "Non-CSHCN"

1 "Rx meds ONLY"

2 "Service use ONLY"

3 "Rx meds AND service use"

4 "Func (only or w/ any other)".

EXE.



|  |   |
|--|---|
| <b>Family Structure</b>  | <b>What are the family structure characteristics of the child's household at the time of the survey?</b>  |
| <b>Survey Items Used</b>   | S1Q02, S9Q00, S9Q01, S9Q02  |
| <b>Numerators</b>  | <ul style="list-style-type: none"> <li>• Two-parent household (biological/adoptive)</li> <li>• Two-parent stepfamily household</li> <li>• Mother-only household, no father present</li> <li>• Other family structure</li> </ul> |
| <b>Denominator</b>   | Children/youth ages 0–17 years  |
| <b>Interpretation</b>  | Percent of children/youth ages 0–17 in two-parent households, two-parent households with at least one step-parent, mother-only households with no father of any type present, or in a household of any other family structure.  |
| <b>Notes for Data-Users</b>  |   |
| <p>To protect confidentiality, a single measure of family structure was created by the NCHS for inclusion in the publicly released data file. "Family structure" refers to parents living in the household. Any of the four family structure categories may include other people who act as parents, such as grandparents, aunts, uncles, or unmarried partners of the parents. Legal guardians were not considered to be mothers or fathers. Households identified as having two mothers of the same type (biological, step, foster, or adoptive) were classified as "other family structure." However, because of this ambiguity about whether the respondent was also counted as another parent in the household, these households may actually be "single mother" households. Other households with ambiguous structure (e.g., where a father refused to indicate whether he was the biological father) were also coded as "other family structure."</p> |   |
| <b>SPSS Code and Annotation</b>  |   |
| <pre>COMPUTE famtype = FAMSTRUCT. VAR LAB famtype "How many children live in one-parent versus two-parent households? (derived)". VAL LAB famtype   1 "Two-parent household (biological/adoptive)"   2 "Two-parent household with at least one step-parent"   3 "Mother-only household with no father of any type present"   4 "All other family structures". FORMATS famtype (f4.0). EXECUTE.</pre>   |   |

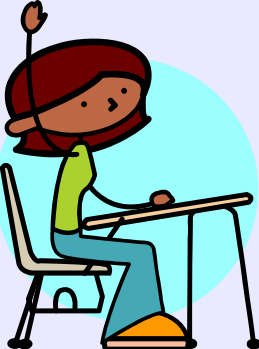
| <b>Household Income</b>   | <b>How many children/youth live in households with incomes above/below the Federal Poverty Level (FPL)?</b>  |
|---|--|
| <b>Survey Items Used</b>  | C11Q01; W9Q02 – W9Q12a   |
| <b>Numerators</b>   | <ul style="list-style-type: none"> <li>• Household income less than 100 percent of FPL</li> <li>• Household income 100–199 percent of FPL</li> <li>• Household income 200–399 percent FPL</li> <li>• Household income 400 percent FPL or more</li> </ul> |
| <b>Denominator</b>  | Children/youth ages 0–17 years   |
| <b>Interpretation</b>   | Percent of children/youth ages 0–17 living in households whose income is 0–99 percent, 100–199 percent, 200–399 percent, or 400 percent or more of FPL.  |
| <b>Notes for Data-Users</b>   |  |
| <p>Income level of household expressed as percent of FPL derived from total household income during prior year and number of people living in the household. Federal Poverty Guidelines released in 2002 and 2003 by the Department of Health and Human Services were used for the determination of household poverty status.</p> <p>For more information go to: <a href="http://www.cdc.gov/nchs/data/slraits/NSCH_Methodology_Report.pdf">http://www.cdc.gov/nchs/data/slraits/NSCH_Methodology_Report.pdf</a>.</p> <p>The number of unknown values for this variable is unusually high (10 percent). Unknown values are not included in the denominator; weighted population counts may be underestimated.</p> |  |
| <b>SPSS Code and Annotation</b>   |  |
| <pre> RECODE POVERTY_LEVELR   (1=1) (2 thru 5=2) (6 thru 7=3) (8=4) (else=copy) INTO povlev_4. VAR LAB povlev_4 "How many children/youth ages 0-17 live in households (HH) with incomes above/below Federal Poverty Level (FPL)?". VAL LAB povlev_4   1 'HH income 0 - 99% FPL'   2 'HH income 100 - 199% FPL'   3 'HH income 200 - 399% FPL'   4 'HH income 400% FPL or more'   6 'DK'   7 'Refused'. MISSING VALUES povlev_4 (6,7). FORMATS povlev_4 (f4.0). EXECUTE. </pre>  |  |

| <b>Insurance Type<br/>(Indicator 3.3)</b>   | <b>What type of health insurance coverage, if any, did children/youth have at the time of the survey?</b>   |
|---|---|
| <b>Survey Items Used</b>  | S3Q01, S3Q02  |
| <b>Numerators</b>   | <ul style="list-style-type: none"> <li>• Children/youth who are currently uninsured</li> <li>• Children/youth who currently have private insurance coverage</li> <li>• Children/youth who currently have public insurance coverage</li> </ul> |
| <b>Denominator</b>  | Children/youth ages 0–17 years  |
| <b>Interpretation</b>   | Children/youth ages 0–17 whose health insurance coverage at the time of survey was either private (S3Q01 = Yes and S3Q02 = No) or public (S3Q01 and S3Q02 = Yes) or none (S3Q01 = No).  |
| <b>Notes for Data-Users</b>   |   |
| <p>Private health insurance is defined as any type of health insurance, including HMOs, other than public programs. Public health insurance is defined as Medicaid or the State Children’s Health Insurance Program (SCHIP).</p> <p>This item serves as a stratifier as well as a key indicator.</p>  |   |
| <b>SPSS Code and Annotation</b>   |   |
| <pre> RECODE S3Q02   (0=2) (ELSE=copy) INTO ind3_3. DO IF (S3Q01=0) .   compute ind3_3 = 3 . end if. VAR LAB ind3_3 "Indicator 3.3: What type of health insurance coverage, if any, did children/youth (ages 0-17) have at the time of the survey?". VAL LAB ind3_3 1 'Public insurance' 2 'Private insurance' 3 'Uninsured' 6 'DK' 7 'Refused'. MISSING VALUES ind3_3 (6,7). FORMATS ind3_3 (f4.0). EXE . </pre> |   |

|   |  |
|---|--|
| <b>Insurance Status<br/>(Indicator 3.1)</b>   | <b>Does (child's name) have any kind of health care coverage, including health insurance, prepaid plans such as HMOs, or government plans such as Medicaid?</b>                        |
| <b>Survey Items Used</b>  | S3Q01  |
| <b>Numerator</b>  | Children/youth who currently have health care coverage.  |
| <b>Denominator</b>  | Children/youth ages 0–17 years   |
| <b>Interpretation</b>   | Percent of children/youth ages 0–17 with any kind of health care coverage, including health insurance, prepaid plans such as HMOs, or government plans such as Medicaid (S3Q01 = Yes). |
| <b>Notes for Data-Users</b>   |  |
| This item serves as a stratifier as well as a key indicator.  |  |
| <b>SPSS Code and Annotation</b>   |  |
| <pre> COMPUTE ind3_1 = S3Q01 . VAR LAB ind3_1 "Indicator 3.1: Does (child's name) have any kind of health care coverage?". VAL LAB ind3_1 0 'No' 1 'Yes' 6 'DK' 7 'Refused' . MISSING VALUES ind3_1 (6,7). FORMATS ind3_1 (f4.0). EXE. </pre> |  |

# Appendix A: Unweighted Frequency Tables

---



Unweighted Frequency Tables

Indicator 1.1: In general, how would you describe (child's name)'s health? (S2Q01)

| ind1_1              | Frequency | Percent | Cumulative Frequency | Cumulative Percent |
|---------------------|-----------|---------|----------------------|--------------------|
| Excellent/Very Good | 89155     | 87.13   | 89155                | 87.13              |
| Good                | 10680     | 10.44   | 99835                | 97.57              |
| Fair/Poor           | 2486      | 2.43    | 102321               | 100.00             |

Frequency Missing = 32

Indicator 1.2: How would you describe the condition of (child's name)'s teeth?(S2Q54 - ages 1-17 who have natural teeth)

| ind1_2                           | Frequency | Percent | Cumulative Frequency | Cumulative Percent |
|----------------------------------|-----------|---------|----------------------|--------------------|
| Excellent or very good condition | 69790     | 72.94   | 69790                | 72.94              |
| Good condition                   | 18757     | 19.60   | 88547                | 92.55              |
| Fair or poor condition           | 7130      | 7.45    | 95677                | 100.00             |

Frequency Missing = 6676

Indicator 1.3: Was (child's name) ever breastfed or fed breast milk? (S6Q59 -ages 0-5 only)

| ind1_3 | Frequency | Percent | Cumulative Frequency | Cumulative Percent |
|--------|-----------|---------|----------------------|--------------------|
| Yes    | 24285     | 73.32   | 24285                | 73.32              |
| No     | 8836      | 26.68   | 33121                | 100.00             |

Frequency Missing = 69232

Indicator 1.4: What is the weight status of children/youth ages 10-17 based on BMI-for-age? (derived)

| ind1_4                 | Frequency | Percent | Cumulative Frequency | Cumulative Percent |
|------------------------|-----------|---------|----------------------|--------------------|
| Underweight            | 2213      | 4.74    | 2213                 | 4.74               |
| Normal Weight          | 30955     | 66.27   | 33168                | 71.01              |
| At Risk for Overweight | 7119      | 15.24   | 40287                | 86.25              |
| Overweight             | 6420      | 13.75   | 46707                | 100.00             |

Frequency Missing = 55646

Indicator 1.5: During the past week, on how many days did (child's name) exercise or participate in physical activity for at least 20 minutes that made him/her sweat and breathe hard? (S7Q21 - ages 6-17 only)

| ind1_5     | Frequency | Percent | Cumulative Frequency | Cumulative Percent |
|------------|-----------|---------|----------------------|--------------------|
| 0 days     | 7705      | 11.27   | 7705                 | 11.27              |
| 1 - 3 days | 20695     | 30.28   | 28400                | 41.55              |
| 4 - 6 days | 23332     | 34.14   | 51732                | 75.69              |
| Every day  | 16617     | 24.31   | 68349                | 100.00             |

Frequency Missing = 34004

Unweighted Frequency Tables

Indicator 1.6: During the past 12 months, about how many days did (child's name) miss school because of illness or injury? (S7Q02 - ages 6-17 only)

| ind1_6                    | Frequency | Percent | Cumulative Frequency | Cumulative Percent |
|---------------------------|-----------|---------|----------------------|--------------------|
| 0 days                    | 14170     | 20.82   | 14170                | 20.82              |
| 1 - 5 days                | 41374     | 60.80   | 55544                | 81.62              |
| 6 - 10 days               | 8769      | 12.89   | 64313                | 94.51              |
| 11 + days                 | 3737      | 5.49    | 68050                | 100.00             |
| Frequency Missing = 34303 |           |         |                      |                    |

Indicator 1.7: During the past 12 months, has (child's name) been injured and required medical attention? (S6Q55 - ages 0-5 only)

| ind1_7                    | Frequency | Percent | Cumulative Frequency | Cumulative Percent |
|---------------------------|-----------|---------|----------------------|--------------------|
| Yes                       | 3326      | 9.99    | 3326                 | 9.99               |
| No                        | 29964     | 90.01   | 33290                | 100.00             |
| Frequency Missing = 69063 |           |         |                      |                    |

Indicator 1.8: During the past 12 months, has (child's name) been poisoned by accident and required medical attention? (S6Q57 - ages 0-5; national-level data only)

| ind1_8                    | Frequency | Percent | Cumulative Frequency | Cumulative Percent |
|---------------------------|-----------|---------|----------------------|--------------------|
| Yes                       | 189       | 0.57    | 189                  | 0.57               |
| No                        | 33109     | 99.43   | 33298                | 100.00             |
| Frequency Missing = 69055 |           |         |                      |                    |

Indicator 1.11: Overall, would you say (child's name)'s asthma puts a burden on your family a great deal, a medium amount, a little, or not at all? (S2Q51 - only asked for children who currently have asthma)

|  | ind1_11 | Frequency | Percent | Cumulative Frequency | Cumulative Percent |
|--|---------|-----------|---------|----------------------|--------------------|
| Affects family a great deal or medium amount |         | 1230      | 14.18   | 1230                 | 14.18              |
| Affects family a little or not at all        |         | 7445      | 85.82   | 8675                 | 100.00             |
| Frequency Missing = 93678                    |         |           |         |                      |                    |

Indicator 1.12: During the past 12 months, has (child's name) stayed overnight in a hospital because of his/her asthma? (derived - national-level data only)

|   | ind1_12 | Frequency | Percent | Cumulative Frequency | Cumulative Percent |
|---|---------|-----------|---------|----------------------|--------------------|
| Have asthma ever, no hospitalizations         |         | 11728     | 11.48   | 11728                | 11.48              |
| Have asthma ever, yes hospitalized for asthma |         | 466       | 0.46    | 12194                | 11.94              |
| Do not have asthma                            |         | 89933     | 88.06   | 102127               | 100.00             |
| Frequency Missing = 226                       |         |           |         |                      |                    |

Unweighted Frequency Tables

Indicator 2.1: How many children (ages 0-5) have parents with one or more concerns about child's learning, development, or behavior? (derived)

| ind2_1                             | Frequency | Percent | Cumulative Frequency | Cumulative Percent |
|------------------------------------|-----------|---------|----------------------|--------------------|
| 1 or more parent-reported concerns | 11695     | 35.10   | 11695                | 35.10              |
| No parent-reported concerns        | 21627     | 64.90   | 33322                | 100.00             |
| Frequency Missing = 69031          |           |         |                      |                    |

Indicator 2.3: How many children/youth (ages 3-17) have moderate or severe difficulties in the areas of emotions, concentration, behavior, or being able to get along with other people? (derived)

| ind2_3   | Frequency | Percent | Cumulative Frequency | Cumulative Percent |
|--|-----------|---------|----------------------|--------------------|
| Moderate or severe difficulties in 1 or more areas | 7466      | 8.78    | 7466                 | 8.78               |
| No difficulties or minor difficulties              | 77610     | 91.22   | 85076                | 100.00             |
| Frequency Missing = 17277                          |           |         |                      |                    |

Indicator 2.4: Overall, would you say (child's name)'s mental and emotional health puts a burden on your family a great deal, a medium amount, a little, or not at all? (S2Q61 - ages 3-17 with socio-emotional difficulties)

| ind2_4                                       | Frequency | Percent | Cumulative Frequency | Cumulative Percent |
|--|-----------|---------|----------------------|--------------------|
| Affects family a great deal or medium amount | 4151      | 28.28   | 4151                 | 28.28              |
| Affects family a little or not at all        | 10527     | 71.72   | 14678                | 100.00             |
| Frequency Missing = 87675                    |           |         |                      |                    |

Indicator 2.6: How many children/youth (ages 6-17) often exhibit two or more problematic behaviors? (derived)

| ind2_6   | Frequency | Percent | Cumulative Frequency | Cumulative Percent |
|--|-----------|---------|----------------------|--------------------|
| Often exhibits 2 or more problematic behaviors | 4934      | 7.15    | 4934                 | 7.15               |
| Seldom exhibits problematic behaviors          | 64097     | 92.85   | 69031                | 100.00             |
| Frequency Missing = 33322                      |           |         |                      |                    |

Indicator 2.7: How many children/youth (ages 2-17) whose parents have ever been told child has ADD/ADHD currently take medication for this condition?

| ind2_7  | Frequency | Percent | Cumulative Frequency | Cumulative Percent |
|---|-----------|---------|----------------------|--------------------|
| ADD/ADHD ever; child currently takes medication | 3794      | 4.22    | 3794                 | 4.22               |
| ADD/ADHD ever; child not taking medication now  | 2710      | 3.02    | 6504                 | 7.24               |
| Never told child has ADD/ADHD                   | 83326     | 92.76   | 89830                | 100.00             |
| Frequency Missing = 12523                       |           |         |                      |                    |



Unweighted Frequency Tables

Indicator 2.8: Has a doctor or health professional ever told you that (child's name) has autism? (S2Q35)

| ind2_8                  | Frequency | Percent | Cumulative Frequency | Cumulative Percent |
|-------------------------|-----------|---------|----------------------|--------------------|
| Yes                     | 495       | 0.48    | 495                  | 0.48               |
| No                      | 101726    | 99.52   | 102221               | 100.00             |
| Frequency Missing = 132 |           |         |                      |                    |

Indicator 3.1: Does (child's name) have any kind of health care coverage, including health insurance, prepaid plans such as HMOs, or government plans such as Medicaid? (S3Q01)

| ind3_1                  | Frequency | Percent | Cumulative Frequency | Cumulative Percent |
|-------------------------|-----------|---------|----------------------|--------------------|
| Yes                     | 94300     | 92.28   | 94300                | 92.28              |
| No                      | 7884      | 7.72    | 102184               | 100.00             |
| Frequency Missing = 169 |           |         |                      |                    |

Indicator 3.2: How many children/youth (ages 0-17) had consistent health insurance coverage during the past 12 months? (derived)

|   | ind3_2 | Frequency | Percent | Cumulative Frequency | Cumulative Percent |
|---|--------|-----------|---------|----------------------|--------------------|
| Currently uninsured or periods of no coverage during year |        | 13280     | 13.02   | 13280                | 13.02              |
| Consistently insured during past year                     |        | 88748     | 86.98   | 102028               | 100.00             |
| Frequency Missing = 325                                   |        |           |         |                      |                    |

Indicator 3.3: What type of health insurance coverage, if any, did children/youth (ages 0-17) have at the time of the survey? (derived)

|                          | ind3_3 | Frequency | Percent | Cumulative Frequency | Cumulative Percent |
|--------------------------|--------|-----------|---------|----------------------|--------------------|
| Public insurance         |        | 22624     | 22.33   | 22624                | 22.33              |
| Private insurance        |        | 70793     | 69.88   | 93417                | 92.22              |
| Uninsured                |        | 7884      | 7.78    | 101301               | 100.00             |
| Frequency Missing = 1052 |        |           |         |                      |                    |

Indicator 4.1: How many children/youth (ages 0-17) had one or more preventive medical care visits during the past 12 months? (derived)

|  | ind4_1 | Frequency | Percent | Cumulative Frequency | Cumulative Percent |
|--|--------|-----------|---------|----------------------|--------------------|
| One or more preventive medical care visits |        | 79190     | 78.06   | 79190                | 78.06              |
| NO preventive medical care visits          |        | 22255     | 21.94   | 101445               | 100.00             |
| Frequency Missing = 908                    |        |           |         |                      |                    |

Unweighted Frequency Tables

Indicator 4.2: How many children/youth (ages 1-17) with a need for routine preventive dental care, such as check-ups, screenings, and sealants, got all the care that was needed? (derived)

| ind4_2                      | Frequency | Percent | Cumulative Frequency | Cumulative Percent |
|-----------------------------|-----------|---------|----------------------|--------------------|
| Did not get all needed care | 4233      | 5.81    | 4233                 | 5.81               |
| Got all needed care         | 68678     | 94.19   | 72911                | 100.00             |
| Frequency Missing = 29442   |           |         |                      |                    |

Indicator 4.3: How many children/youth (ages 0-17) have both medical AND dental preventive care visits in the past 12 months? (derived)

| ind4_3   | Frequency | Percent | Cumulative Frequency | Cumulative Percent |
|--|-----------|---------|----------------------|--------------------|
| Got both medical and dental preventive care visits         | 60117     | 59.80   | 60117                | 59.80              |
| Did NOT get both medical and dental preventive care visits | 40420     | 40.20   | 100537               | 100.00             |
| Frequency Missing = 1816                                   |           |         |                      |                    |

Indicator 4.4: During the past 12 months, how many times did (child's name) go to a hospital ER about his/her health? (S4Q04 - ages 0-17)

| ind4_4                  | Frequency | Percent | Cumulative Frequency | Cumulative Percent |
|-------------------------|-----------|---------|----------------------|--------------------|
| 0 times                 | 83198     | 81.56   | 83198                | 81.56              |
| 1 time                  | 13042     | 12.79   | 96240                | 94.35              |
| 2 or more times         | 5763      | 5.65    | 102003               | 100.00             |
| Frequency Missing = 350 |           |         |                      |                    |

Indicator 4.5: How many children/youth (ages 1-17) with current emotional, developmental, or behavioral problems requiring treatment or counseling received some type of mental health care in the past 12 months? (derived)

| ind4_5  | Frequency | Percent | Cumulative Frequency | Cumulative Percent |
|---|-----------|---------|----------------------|--------------------|
| Did NOT get mental health care/counseling           | 2338      | 37.10   | 2338                 | 37.10              |
| Received mental health care/counseling of some type | 3964      | 62.90   | 6302                 | 100.00             |
| Frequency Missing = 96051                           |           |         |                      |                    |

Indicator 4.6: During the past 12 months, did (child's name) receive all the medical care he/she needed? (S4Q07 - ages 0-17 who needed or used medical care)

| ind4_6                    | Frequency | Percent | Cumulative Frequency | Cumulative Percent |
|---------------------------|-----------|---------|----------------------|--------------------|
| Yes                       | 87853     | 98.66   | 87853                | 98.66              |
| No                        | 1192      | 1.34    | 89045                | 100.00             |
| Frequency Missing = 13308 |           |         |                      |                    |

Unweighted Frequency Tables

Indicator 4.7: During the past 12 months, did (child's name) receive all the Rx he/she needed? (S4Q17 - ages 0-17 who needed Rx)

| ind4_7                            | Frequency | Percent | Cumulative Frequency | Cumulative Percent |
|-----------------------------------|-----------|---------|----------------------|--------------------|
| Did not get all needed medication | 643       | 1.01    | 643                  | 1.01               |
| Got all needed medication         | 63205     | 98.99   | 63848                | 100.00             |
| Frequency Missing = 38505         |           |         |                      |                    |

Indicator 4.8: How many children/youth (ages 0-17) receive health care that meets the AAP definition of medical home? (derived)

| ind4_8                                     | Frequency | Percent | Cumulative Frequency | Cumulative Percent |
|--|-----------|---------|----------------------|--------------------|
| Care MEETS medical home definition.        | 49089     | 48.51   | 49089                | 48.51              |
| Care DOES NOT meet medical home definition | 52105     | 51.49   | 101194               | 100.00             |
| Frequency Missing = 1159                   |           |         |                      |                    |

Indicator 4.9: A PDN is a health professional who knows your child well and is familiar with your child's health history. Do you have one or more person(s) you think of as (child's) PDN? (S5Q01 - ages 0-17)

| ind4_9                  | Frequency | Percent | Cumulative Frequency | Cumulative Percent |
|-------------------------|-----------|---------|----------------------|--------------------|
| Yes                     | 87491     | 85.73   | 87491                | 85.73              |
| No                      | 14568     | 14.27   | 102059               | 100.00             |
| Frequency Missing = 294 |           |         |                      |                    |

Indicator 4.10: How many children/youth (ages 0-17) have a PDN who consistently spends enough time with them and explains things in ways that children and parents can understand?

| ind4_10   | Frequency | Percent | Cumulative Frequency | Cumulative Percent |
|---|-----------|---------|----------------------|--------------------|
| Child does not have a personal dr/nurse                                   | 14568     | 14.29   | 14568                | 14.29              |
| Personal dr/nurse does not consistently spend enough time or explain well | 16760     | 16.44   | 31328                | 30.73              |
| Personal dr/nurse consistently spends enough time and explains well       | 70627     | 69.27   | 101955               | 100.00             |
| Frequency Missing = 398   |           |         |                      |                    |

Unweighted Frequency Tables

Indicator 4.11: How many children/youth (ages 0-17) have a PDN who is consistently available when phone advice or urgent care is needed for child? (derived - ages 0-17 who needed phone advice or urgent care)

| ind4_11                        | Frequency | Percent | Cumulative Frequency | Cumulative Percent |
|--------------------------------|-----------|---------|----------------------|--------------------|
| PDN consistently available     | 44340     | 92.34   | 44340                | 92.34              |
| PDN not consistently available | 3678      | 7.66    | 48018                | 100.00             |
| Frequency Missing = 54335      |           |         |                      |                    |

Indicator 4.12: How many children/youth (ages 0-17) had problems getting the specialty care, services, or equipment recommended by their PDN? (derived - ages 0-17 who needed specialist care or equipment)

| ind4_12                                       | Frequency | Percent | Cumulative Frequency | Cumulative Percent |
|---|-----------|---------|----------------------|--------------------|
| Few or no problems getting recommended care   | 21474     | 85.85   | 21474                | 85.85              |
| Significant problems getting recommended care | 3539      | 14.15   | 25013                | 100.00             |
| Frequency Missing = 77340                     |           |         |                      |                    |

Indicator 4.13: How many children/youth (ages 0-17) have a PDN who follows up with family after child sees specialist or gets specialized services/equipment? (derived - ages 0-17 who got specialized services or equipment)

| ind4_13                             | Frequency | Percent | Cumulative Frequency | Cumulative Percent |
|-------------------------------------|-----------|---------|----------------------|--------------------|
| PDN consistently follows up         | 14214     | 57.71   | 14214                | 57.71              |
| PDN does not consistently follow up | 10417     | 42.29   | 24631                | 100.00             |
| Frequency Missing = 77722           |           |         |                      |                    |

Indicator 4.14: During the past 12 months, did (child's name)'s doctors or other health care professionals ask if you have concerns about his/her learning, development, or behavior? (S6Q28 - ages 0-5)

| ind4_14                          | Frequency | Percent | Cumulative Frequency | Cumulative Percent |
|----------------------------------|-----------|---------|----------------------|--------------------|
| Visited dr, asked about concerns | 13349     | 40.53   | 13349                | 40.53              |
| Visited dr, but not asked        | 17397     | 52.82   | 30746                | 93.34              |
| Child did not visit doctor       | 2193      | 6.66    | 32939                | 100.00             |
| Frequency Missing = 69414        |           |         |                      |                    |

Indicator 4.15: During the past 12 months, did (child's name)'s doctors give you specific information to address your concerns about his/her learning, development, or behavior? (S6Q29 - ages 0-5 with highly concerned parents)

| ind4_15                               | Frequency | Percent | Cumulative Frequency | Cumulative Percent |
|---------------------------------------|-----------|---------|----------------------|--------------------|
| Highly concerned AND got needed info  | 1719      | 45.85   | 1719                 | 45.85              |
| Highly concerned but did not get info | 2030      | 54.15   | 3749                 | 100.00             |
| Frequency Missing = 98604             |           |         |                      |                    |

Unweighted Frequency Tables

Indicator 5.1: How many children (ages 3-5) regularly attended nursery school, preschool, kindergarten, Head Start, or Early Start during the past month? (derived)

|                                      | ind5_1 | Frequency | Percent | Cumulative<br>Frequency | Cumulative<br>Percent |
|--------------------------------------|--------|-----------|---------|-------------------------|-----------------------|
| Regularly attended during past month |        | 10197     | 62.45   | 10197                   | 62.45                 |
| Did not attend during past month     |        | 6130      | 37.55   | 16327                   | 100.00                |
| Frequency Missing = 86026            |        |           |         |                         |                       |

Indicator 5.2: Since starting kindergarten, has (child's name) repeated any grades? (S7Q09 - ages 6-17)

|                           | ind5_2 | Frequency | Percent | Cumulative<br>Frequency | Cumulative<br>Percent |
|---------------------------|--------|-----------|---------|-------------------------|-----------------------|
| Yes                       |        | 6580      | 9.55    | 6580                    | 9.55                  |
| No                        |        | 62301     | 90.45   | 68881                   | 100.00                |
| Frequency Missing = 33472 |        |           |         |                         |                       |

Indicator 5.3: How many children/youth (ages 6-17) participate in one or more organized activities outside of school, such as sports teams or lessons, clubs, or religious groups? (derived)

|  | ind5_3 | Frequency | Percent | Cumulative<br>Frequency | Cumulative<br>Percent |
|--|--------|-----------|---------|-------------------------|-----------------------|
| Participated in 1 or more organized activities |        | 58608     | 85.07   | 58608                   | 85.07                 |
| Did not participate in organized activities    |        | 10284     | 14.93   | 68892                   | 100.00                |
| Frequency Missing = 33461                      |        |           |         |                         |                       |

Indicator 5.4: During the past 12 months, has (child's name) been involved in any type of community service or volunteer work at school, church, or in the community? (S7Q17 -ages 12-17)

|                                | ind5_4 | Frequency | Percent | Cumulative<br>Frequency | Cumulative<br>Percent |
|--------------------------------|--------|-----------|---------|-------------------------|-----------------------|
| Participated in volunteer work |        | 24409     | 64.68   | 24409                   | 64.68                 |
| Did NOT participate            |        | 13329     | 35.32   | 37738                   | 100.00                |
| Frequency Missing = 64615      |        |           |         |                         |                       |

Indicator 5.5: During the past week, how many hours did (child's name) work for pay?(S7Q19 - ages 12-17)

|                           | ind5_5 | Frequency | Percent | Cumulative<br>Frequency | Cumulative<br>Percent |
|---------------------------|--------|-----------|---------|-------------------------|-----------------------|
| Did not work              |        | 27722     | 73.42   | 27722                   | 73.42                 |
| Less than 1 hour-9 hours  |        | 5217      | 13.82   | 32939                   | 87.23                 |
| 10 hours or more          |        | 4821      | 12.77   | 37760                   | 100.00                |
| Frequency Missing = 64593 |        |           |         |                         |                       |

Unweighted Frequency Tables

Indicator 5.6: On an average school day, about how much time does (child's name) usually spend reading for pleasure? (S7Q26 - ages 6-17)

| ind5_6                    | Frequency | Percent | Cumulative Frequency | Cumulative Percent |
|---------------------------|-----------|---------|----------------------|--------------------|
| None                      | 11635     | 17.17   | 11635                | 17.17              |
| 30 minutes or less        | 30872     | 45.55   | 42507                | 62.72              |
| 31-60 minutes             | 16876     | 24.90   | 59383                | 87.62              |
| Over 60 minutes           | 8391      | 12.38   | 67774                | 100.00             |
| Frequency Missing = 34579 |           |         |                      |                    |

Indicator 5.7: How often do children/youth (ages 0-17) attend religious services?(derived)

| ind5_7                  | Frequency | Percent | Cumulative Frequency | Cumulative Percent |
|-------------------------|-----------|---------|----------------------|--------------------|
| Never                   | 23102     | 22.68   | 23102                | 22.68              |
| At least once a year    | 7273      | 7.14    | 30375                | 29.82              |
| At least once a month   | 17116     | 16.80   | 47491                | 46.62              |
| Once a week, or more    | 54374     | 53.38   | 101865               | 100.00             |
| Frequency Missing = 488 |           |         |                      |                    |

Indicator 6.1: Would you say that in general (child's mother's name)'s health is excellent, very good, good, fair, or poor ? (S9Q08 - biological, step, foster, or adoptive mother in the household)

| ind6_1                   | Frequency | Percent | Cumulative Frequency | Cumulative Percent |
|--------------------------|-----------|---------|----------------------|--------------------|
| Excellent/Very Good      | 66610     | 69.69   | 66610                | 69.69              |
| Good                     | 20929     | 21.90   | 87539                | 91.59              |
| Fair/Poor                | 8042      | 8.41    | 95581                | 100.00             |
| Frequency Missing = 6772 |           |         |                      |                    |

Indicator 6.2: Would you say in general that (child's mother's name)'s mental and emotional health is excellent, very good, good, fair, or poor? (S9Q18 - biological, step, foster, or adoptive mother in the household)

| ind6_2                   | Frequency | Percent | Cumulative Frequency | Cumulative Percent |
|--------------------------|-----------|---------|----------------------|--------------------|
| Excellent/Very Good      | 71717     | 75.08   | 71717                | 75.08              |
| Good                     | 18770     | 19.65   | 90487                | 94.73              |
| Fair/Poor                | 5036      | 5.27    | 95523                | 100.00             |
| Frequency Missing = 6830 |           |         |                      |                    |

Unweighted Frequency Tables

Indicator 6.3: How many children/youth (ages 0-17) have mothers whose physical and mental health were BOTH excellent or very good? (derived)

| ind6_3   | Frequency | Percent | Cumulative Frequency | Cumulative Percent |
|--|-----------|---------|----------------------|--------------------|
| One or both are NOT excellent/very good                    | 35656     | 37.34   | 35656                | 37.34              |
| Maternal physical & mental health BOTH excellent/very good | 59822     | 62.66   | 95478                | 100.00             |
| Frequency Missing = 6875                                   |           |         |                      |                    |

Indicator 6.4: Does anyone in the household use cigarettes, cigars, or pipe tobacco?

| ind6_4                              | Frequency | Percent | Cumulative Frequency | Cumulative Percent |
|-------------------------------------|-----------|---------|----------------------|--------------------|
| Someone in household smokes tobacco | 26947     | 30.27   | 26947                | 30.27              |
| No one in household smokes tobacco  | 62085     | 69.73   | 89032                | 100.00             |
| Frequency Missing = 13321           |           |         |                      |                    |

Indicator 6.5: How many children/youth (ages 0-17) live in 'working poor' households - parents employed full-time with incomes less than 100 percent of the FPL?

| ind6_5                             | Frequency | Percent | Cumulative Frequency | Cumulative Percent |
|------------------------------------|-----------|---------|----------------------|--------------------|
| Does not live in "working poor" HH | 85068     | 91.71   | 85068                | 91.71              |
| Lives in "working poor" HH         | 7687      | 8.29    | 92755                | 100.00             |
| Frequency Missing = 9598           |           |         |                      |                    |

Indicator 6.6: During the past week, how many times did you or any family member take (child's name) on any kind of outing, such as to the park, library, zoo, shopping, church, restaurants, or family gatherings? (S8Q01 - ages 0-5 only)

| ind6_6                    | Frequency | Percent | Cumulative Frequency | Cumulative Percent |
|---------------------------|-----------|---------|----------------------|--------------------|
| None                      | 819       | 2.47    | 819                  | 2.47               |
| 1-3 times                 | 11841     | 35.64   | 12660                | 38.11              |
| 4-6 times                 | 12285     | 36.98   | 24945                | 75.09              |
| 7 or more times           | 8276      | 24.91   | 33221                | 100.00             |
| Frequency Missing = 69132 |           |         |                      |                    |

Unweighted Frequency Tables

Indicator 6.7: During the past week, how many days did you or other family members read stories to (child's name)? (S6Q62 - ages 0-5 only)

| ind6_7                    | Frequency | Percent | Cumulative Frequency | Cumulative Percent |
|---------------------------|-----------|---------|----------------------|--------------------|
| No days                   | 2171      | 6.55    | 2171                 | 6.55               |
| 1 or 2 days               | 3753      | 11.32   | 5924                 | 17.87              |
| 3 or 4 days               | 5942      | 17.93   | 11866                | 35.80              |
| 5 or 6 days               | 3962      | 11.95   | 15828                | 47.75              |
| Every day                 | 17318     | 52.25   | 33146                | 100.00             |
| Frequency Missing = 69207 |           |         |                      |                    |

Indicator 6.8: During the past week, on how many days did all the family members who live in the household eat a meal together? (S8Q03)

| ind6_8                  | Frequency | Percent | Cumulative Frequency | Cumulative Percent |
|-------------------------|-----------|---------|----------------------|--------------------|
| No days                 | 4698      | 4.60    | 4698                 | 4.60               |
| 1-3 days                | 19909     | 19.48   | 24607                | 24.08              |
| 4-6 days                | 31379     | 30.71   | 55986                | 54.79              |
| Every day               | 46203     | 45.21   | 102189               | 100.00             |
| Frequency Missing = 164 |           |         |                      |                    |

Indicator 6.9: During the past week, on how many nights did (child's name) get enough sleep for a child his/her age? (S7Q20 - ages 6-17)

| ind6_9                    | Frequency | Percent | Cumulative Frequency | Cumulative Percent |
|---------------------------|-----------|---------|----------------------|--------------------|
| 0 nights                  | 2020      | 2.95    | 2020                 | 2.95               |
| 1-3 nights                | 3728      | 5.45    | 5748                 | 8.40               |
| 4-6 nights                | 17229     | 25.18   | 22977                | 33.58              |
| Every night               | 45441     | 66.42   | 68418                | 100.00             |
| Frequency Missing = 33935 |           |         |                      |                    |

Indicator 6.10: On an average school day, about how many hours does (child's name) usually watch TV, watch videos, or play video games? (S7Q28 - ages 6-17 only)

| ind6_10                   | Frequency | Percent | Cumulative Frequency | Cumulative Percent |
|---------------------------|-----------|---------|----------------------|--------------------|
| None                      | 4827      | 7.04    | 4827                 | 7.04               |
| 1 hour or less            | 33855     | 49.41   | 38682                | 56.46              |
| 2-3 hours                 | 25466     | 37.17   | 64148                | 93.62              |
| 4 hours or more           | 4369      | 6.38    | 68517                | 100.00             |
| Frequency Missing = 33836 |           |         |                      |                    |



Unweighted Frequency Tables

Indicator 6.11: Sometimes children spend time caring for themselves at home without an adult responsible for them. During the past week, did (child's name) spend time caring for himself/herself for even a small amount of time? (S7Q15 - ages 6-11 only)

| ind6_11                   | Frequency | Percent | Cumulative Frequency | Cumulative Percent |
|---------------------------|-----------|---------|----------------------|--------------------|
| No                        | 25378     | 81.79   | 25378                | 81.79              |
| Yes                       | 5652      | 18.21   | 31030                | 100.00             |
| Frequency Missing = 71323 |           |         |                      |                    |

Indicator 6.12: How many children/youth (ages 0-17) have parents who often felt aggravated with them during the past month?

|   | ind6_12 | Frequency | Percent | Cumulative Frequency | Cumulative Percent |
|---|---------|-----------|---------|----------------------|--------------------|
| Parents seldom felt aggravated at child |         | 95349     | 93.37   | 95349                | 93.37              |
| Parents often felt aggravated at child  |         | 6771      | 6.63    | 102120               | 100.00             |
| Frequency Missing = 233                 |         |           |         |                      |                    |

Indicator 6.13: During the past month, how many times have you had to make different arrangements for child care at the last minute because your usual plans changed due to circumstances beyond your control? (S6Q53 - ages 0-5)

| ind6_13                   | Frequency | Percent | Cumulative Frequency | Cumulative Percent |
|---------------------------|-----------|---------|----------------------|--------------------|
| None                      | 23827     | 71.75   | 23827                | 71.75              |
| 1 time                    | 3537      | 10.65   | 27364                | 82.40              |
| 2-3 times                 | 4064      | 12.24   | 31428                | 94.64              |
| 4 or more times           | 1780      | 5.36    | 33208                | 100.00             |
| Frequency Missing = 69145 |           |         |                      |                    |

Indicator 6.14: During the past 12 months, did you or anyone in the family have to quit, not take, or greatly change your job because of problems with child care for (child's name)? (S6Q54 - ages 0-5 only)

| ind6_14                   | Frequency | Percent | Cumulative Frequency | Cumulative Percent |
|---------------------------|-----------|---------|----------------------|--------------------|
| Yes                       | 3435      | 10.32   | 3435                 | 10.32              |
| No                        | 29849     | 89.68   | 33284                | 100.00             |
| Frequency Missing = 69069 |           |         |                      |                    |

Indicator 6.15: How many children (ages 0-5) have parents who either had to make different child care arrangements in the past month or employment-related changes due to child care reasons in the past year or BOTH? (derived)

|  | ind6_15 | Frequency | Percent | Cumulative Frequency | Cumulative Percent |
|--|---------|-----------|---------|----------------------|--------------------|
| One or more child care issues reported |         | 11170     | 33.64   | 11170                | 33.64              |
| No child care issues reported          |         | 22035     | 66.36   | 33205                | 100.00             |
| Frequency Missing = 69148              |         |           |         |                      |                    |

Unweighted Frequency Tables

Indicator 6.16: How many children (ages 0-5) regularly attend non-parental child care such as a child care center, family-based center, in-home nanny, preschool, etc. during the past month? (derived)

| ind6_16                      | Frequency | Percent | Cumulative Frequency | Cumulative Percent |
|------------------------------|-----------|---------|----------------------|--------------------|
| Yes, non-parental child care | 22384     | 67.19   | 22384                | 67.19              |
| No non-parental child care   | 10929     | 32.81   | 33313                | 100.00             |
| Frequency Missing = 69040    |           |         |                      |                    |

Indicator 7.1: How many children/youth (ages 0-17) live in supportive neighborhoods? (derived)

| ind7_1                                   | Frequency | Percent | Cumulative Frequency | Cumulative Percent |
|--|-----------|---------|----------------------|--------------------|
| Do not live in a supportive neighborhood | 16228     | 16.28   | 16228                | 16.28              |
| Live in a supportive neighborhood        | 83439     | 83.72   | 99667                | 100.00             |
| Frequency Missing = 2686                 |           |         |                      |                    |

Indicator 7.2: How often do you feel (child's name) is safe in your community or neighborhood? (S10Q06)

| ind7_2                   | Frequency | Percent | Cumulative Frequency | Cumulative Percent |
|--------------------------|-----------|---------|----------------------|--------------------|
| Usually or always safe   | 88393     | 87.48   | 88393                | 87.48              |
| Sometimes safe           | 10556     | 10.45   | 98949                | 97.93              |
| Never safe               | 2094      | 2.07    | 101043               | 100.00             |
| Frequency Missing = 1310 |           |         |                      |                    |

Indicator 7.3: How often do you feel (child's name) is safe at school? (S10Q07 -ages 6-17)

| ind7_3                    | Frequency | Percent | Cumulative Frequency | Cumulative Percent |
|---------------------------|-----------|---------|----------------------|--------------------|
| Usually or always safe    | 60723     | 91.07   | 60723                | 91.07              |
| Sometimes safe            | 5507      | 8.26    | 66230                | 99.33              |
| Never safe                | 445       | 0.67    | 66675                | 100.00             |
| Frequency Missing = 35678 |           |         |                      |                    |

How many males and females are in the 0- to 17-year-old population? (S1Q01)

| sex                    | Frequency | Percent | Cumulative Frequency | Cumulative Percent |
|------------------------|-----------|---------|----------------------|--------------------|
| Male                   | 52554     | 51.39   | 52554                | 51.39              |
| Female                 | 49719     | 48.61   | 102273               | 100.00             |
| Frequency Missing = 80 |           |         |                      |                    |

Unweighted Frequency Tables

How many children/youth of different ages are in the 0- to 17-year-old population? (derived - 3 groups)

| age_3         | Frequency | Percent | Cumulative Frequency | Cumulative Percent |
|---------------|-----------|---------|----------------------|--------------------|
| 0-5 yrs old   | 33322     | 32.56   | 33322                | 32.56              |
| 6-11 yrs old  | 31117     | 30.40   | 64439                | 62.96              |
| 12-17 yrs old | 37914     | 37.04   | 102353               | 100.00             |

How many children/youth of different ages are in the 0- to 17-year-old population? (derived - 5 groups)

| age_5         | Frequency | Percent | Cumulative Frequency | Cumulative Percent |
|---------------|-----------|---------|----------------------|--------------------|
| 0-3 yrs old   | 22656     | 22.14   | 22656                | 22.14              |
| 4-7yrs old    | 20755     | 20.28   | 43411                | 42.41              |
| 8-11 yrs old  | 21028     | 20.54   | 64439                | 62.96              |
| 12-14 yrs old | 18174     | 17.76   | 82613                | 80.71              |
| 15-17 yrs old | 19740     | 19.29   | 102353               | 100.00             |

How many children of different races or Hispanic ethnicity are in the 0- to 17-year-old population? (derived)

| race_5                    | Frequency | Percent | Cumulative Frequency | Cumulative Percent |
|---------------------------|-----------|---------|----------------------|--------------------|
| Hispanic                  | 13357     | 13.23   | 13357                | 13.23              |
| White, non-Hispanic       | 70104     | 69.45   | 83461                | 82.69              |
| Black, non-Hispanic       | 9586      | 9.50    | 93047                | 92.18              |
| Multiracial, non-Hispanic | 3943      | 3.91    | 96990                | 96.09              |
| Other, non-Hispanic       | 3947      | 3.91    | 100937               | 100.00             |
| Frequency Missing = 1416  |           |         |                      |                    |

Results for CSHCN screener

| metlwi    | Frequency | Percent | Cumulative Frequency | Cumulative Percent |
|-----------|-----------|---------|----------------------|--------------------|
| CSHCN     | 18578     | 18.15   | 18578                | 18.15              |
| Non-CSHCN | 83775     | 81.85   | 102353               | 100.00             |

How many children live in one-parent versus two-parent households? (derived)

| famtype  | Frequency | Percent | Cumulative Frequency | Cumulative Percent |
|--|-----------|---------|----------------------|--------------------|
| Two-parent household (biological/adoptive)               | 66185     | 66.27   | 66185                | 66.27              |
| Two-parent household with at least one step-parent       | 8195      | 8.21    | 74380                | 74.47              |
| Mother-only household with no father of any type present | 20678     | 20.70   | 95058                | 95.17              |
| All other family structures                              | 4820      | 4.83    | 99878                | 100.00             |
| Frequency Missing = 2475                                 |           |         |                      |                    |

Unweighted Frequency Tables

How many children/youth (ages 0-17) live in households with incomes above/below FPL? (derived)

| povlev_4                          | Frequency | Percent | Cumulative<br>Frequency | Cumulative<br>Percent |
|-----------------------------------|-----------|---------|-------------------------|-----------------------|
| HH income 0-99 percent FPL        | 11307     | 12.17   | 11307                   | 12.17                 |
| HH income 100-199 percent FPL     | 18850     | 20.28   | 30157                   | 32.45                 |
| HH income 200-399 percent FPL     | 33540     | 36.09   | 63697                   | 68.54                 |
| HH income 400 percent FPL or more | 29242     | 31.46   | 92939                   | 100.00                |
| Frequency Missing = 9414          |           |         |                         |                       |

## Appendix B: Medical Home Variables

---



### 2003 National Survey of Children's Health

Unweighted frequency distributions  
for Medical Home sub-components,  
related interim variables and  
composite measure  
generated by the  
SPSS scoring program

**Personal Doctor or Nurse (PDN) Component**

\*\*PDN sub-component score (S5Q01)

**S5Q01 Do you have one or more persons you think of as [S.C.]'s personal doctor or nurse?**

|         |              | Frequency | Percent | Valid Percent | Cumulative Percent |
|---------|--------------|-----------|---------|---------------|--------------------|
| Valid   | 0 No         | 14568     | 14.2    | 14.2          | 14.2               |
|         | 1 Yes        | 87491     | 85.5    | 85.5          | 99.7               |
|         | 6 Don't Know | 267       | .3      | .3            | 100.0              |
|         | 7 Refused    | 26        | .0      | .0            | 100.0              |
|         | Total        | 102352    | 100.0   | 100.0         |                    |
| Missing | System       | 1         | .0      |               |                    |
| Total   |              | 102353    | 100.0   |               |                    |

**Family Centered Care Component**

\*\*Interim variables for Communication with PDN sub-component

**adeqtime How often does ch's PDN spend enough time with them?**

|         |              | Frequency | Percent | Valid Percent | Cumulative Percent |
|---------|--------------|-----------|---------|---------------|--------------------|
| Valid   | 0 Never      | 2006      | 2.0     | 2.3           | 2.3                |
|         | 25 Sometimes | 13379     | 13.1    | 15.4          | 17.7               |
|         | 75 Usually   | 17414     | 17.0    | 20.0          | 37.7               |
|         | 100 Always   | 54117     | 52.9    | 62.3          | 100.0              |
|         | Total        | 86916     | 84.9    | 100.0         |                    |
| Missing | System       | 15437     | 15.1    |               |                    |
| Total   |              | 102353    | 100.0   |               |                    |

**explain How often does ch's PDN explain things so parent or ch understands?**

|         |              | Frequency | Percent | Valid Percent | Cumulative Percent |
|---------|--------------|-----------|---------|---------------|--------------------|
| Valid   | 0 Never      | 756       | .7      | .9            | .9                 |
|         | 25 Sometimes | 3644      | 3.6     | 4.2           | 5.0                |
|         | 75 Usually   | 12003     | 11.7    | 13.8          | 18.8               |
|         | 100 Always   | 70790     | 69.2    | 81.2          | 100.0              |
|         | Total        | 87193     | 85.2    | 100.0         |                    |
| Missing | System       | 15160     | 14.8    |               |                    |
| Total   |              | 102353    | 100.0   |               |                    |

**interpret How often able to get needed interpreter other than family member for grp with PDN**

|         |              | Frequency | Percent | Valid Percent | Cumulative Percent |
|---------|--------------|-----------|---------|---------------|--------------------|
| Valid   | 0 Never      | 138       | .1      | 12.3          | 12.3               |
|         | 25 Sometimes | 335       | .3      | 29.9          | 42.3               |
|         | 75 Usually   | 99        | .1      | 8.8           | 51.1               |
|         | 100 Always   | 547       | .5      | 48.9          | 100.0              |
|         | Total        | 1119      | 1.1     | 100.0         |                    |
| Missing | 6 DK         | 8         | .0      |               |                    |
|         | System       | 101226    | 98.9    |               |                    |
|         | Total        | 101234    | 98.9    |               |                    |
| Total   |              | 102353    | 100.0   |               |                    |

**pdncomm\_cnt Number of needed PDN communication components**

|       |       | Frequency | Percent | Valid Percent | Cumulative Percent |
|-------|-------|-----------|---------|---------------|--------------------|
| Valid | 0     | 14966     | 14.6    | 14.6          | 14.6               |
|       | 1     | 643       | .6      | .6            | 15.3               |
|       | 2     | 85647     | 83.7    | 83.7          | 98.9               |
|       | 3     | 1097      | 1.1     | 1.1           | 100.0              |
|       | Total | 102353    | 100.0   | 100.0         |                    |

**pdn\_sum Total points across all needed elements of comm with PDN**

|       |         | Frequency | Percent | Valid Percent | Cumulative Percent |
|-------|---------|-----------|---------|---------------|--------------------|
| Valid | 0       | 333       | .3      | .4            | .4                 |
|       | 25      | 711       | .7      | .8            | 1.2                |
|       | 50      | 1983      | 1.9     | 2.3           | 3.5                |
|       | 75      | 545       | .5      | .6            | 4.1                |
|       | 100     | 5070      | 5.0     | 5.8           | 9.9                |
|       | 125     | 8341      | 8.1     | 9.5           | 19.4               |
|       | 150     | 5286      | 5.2     | 6.0           | 25.5               |
|       | 175     | 14730     | 14.4    | 16.9          | 42.3               |
|       | 200     | 49820     | 48.7    | 57.0          | 99.4               |
|       | 225     | 203       | .2      | .2            | 99.6               |
|       | 250     | 34        | .0      | .0            | 99.6               |
|       | 275     | 100       | .1      | .1            | 99.7               |
|       | 300     | 231       | .2      | .3            | 100.0              |
|       | Total   | 87387     | 85.4    | 100.0         |                    |
|       | Missing | System    | 14966   | 14.6          |                    |
| Total |         | 102353    | 100.0   |               |                    |

**pdncom100 Average score for communication with PDN component of MEDICAL HOME**

|         |        | Frequency | Percent | Valid Percent | Cumulative Percent |
|---------|--------|-----------|---------|---------------|--------------------|
| Valid   | 0      | 333       | .3      | .4            | .4                 |
|         | 8      | 10        | .0      | .0            | .4                 |
|         | 13     | 622       | .6      | .7            | 1.1                |
|         | 17     | 34        | .0      | .0            | 1.1                |
|         | 25     | 2087      | 2.0     | 2.4           | 3.5                |
|         | 33     | 22        | .0      | .0            | 3.6                |
|         | 38     | 367       | .4      | .4            | 4.0                |
|         | 42     | 93        | .1      | .1            | 4.1                |
|         | 50     | 4759      | 4.6     | 5.4           | 9.5                |
|         | 58     | 42        | .0      | .0            | 9.6                |
|         | 63     | 8248      | 8.1     | 9.4           | 19.0               |
|         | 67     | 143       | .1      | .2            | 19.2               |
|         | 75     | 5486      | 5.4     | 6.3           | 25.5               |
|         | 83     | 34        | .0      | .0            | 25.5               |
|         | 88     | 14688     | 14.4    | 16.8          | 42.3               |
|         | 92     | 100       | .1      | .1            | 42.4               |
|         | 100    | 50319     | 49.2    | 57.6          | 100.0              |
|         | Total  | 87387     | 85.4    | 100.0         |                    |
| Missing | System | 14966     | 14.6    |               |                    |
| Total   |        | 102353    | 100.0   |               |                    |

\*\*Communication with PDN sub-component score (**PDNCOM\_2**)

**pdncom\_2 PDN communication component for Med Home index**

|         |   | Frequency | Percent | Valid Percent | Cumulative Percent |
|---------|---|-----------|---------|---------------|--------------------|
| Valid   | 0 Comm happens less than usually/always   | 16760     | 16.4    | 19.2          | 19.2               |
|         | 1 Usually/always get needed communication | 70627     | 69.0    | 80.8          | 100.0              |
|         | Total                                     | 87387     | 85.4    | 100.0         |                    |
| Missing | System                                    | 14966     | 14.6    |               |                    |
| Total   |   | 102353    | 100.0   |               |                    |



## **Comprehensive Care Component**

\*\* Preventive Medical Care Visit sub-component score (**PREVCARE\_2**)

**prevcare\_2 At least 1 Preventive care visit during past 12 mos**

|       |   | Frequency | Percent | Valid Percent | Cumulative Percent |
|-------|---|-----------|---------|---------------|--------------------|
| Valid | 0 Unknown                                     | 908       | .9      | .9            | .9                 |
|       | 1 None in past 12 months                      | 22255     | 21.7    | 21.7          | 22.6               |
|       | 2 Had preventive care visit in past 12 months | 79190     | 77.4    | 77.4          | 100.0              |
|       | Total   | 102353    | 100.0   | 100.0         |                    |

\*\* Interim variables Getting Needed Care sub-component

**phonehp How often able to get advice over phone from ch's PDN when needed**

|         |              | Frequency | Percent | Valid Percent | Cumulative Percent |
|---------|--------------|-----------|---------|---------------|--------------------|
| Valid   | 0 Never      | 362       | .4      | .9            | .9                 |
|         | 25 Sometimes | 1682      | 1.6     | 4.3           | 5.3                |
|         | 75 Usually   | 5416      | 5.3     | 14.0          | 19.3               |
|         | 100 Always   | 31221     | 30.5    | 80.7          | 100.0              |
|         | Total        | 38681     | 37.8    | 100.0         |                    |
| Missing | System       | 63672     | 62.2    |               |                    |
|         | Total        | 102353    | 100.0   |               |                    |

**getcare How often able to get needed care right away from ch's PDN**

|         |              | Frequency | Percent | Valid Percent | Cumulative Percent |
|---------|--------------|-----------|---------|---------------|--------------------|
| Valid   | 0 Never      | 553       | .5      | 2.0           | 2.0                |
|         | 25 Sometimes | 1572      | 1.5     | 5.8           | 7.8                |
|         | 75 Usually   | 5120      | 5.0     | 18.7          | 26.5               |
|         | 100 Always   | 20074     | 19.6    | 73.5          | 100.0              |
|         | Total        | 27319     | 26.7    | 100.0         |                    |
| Missing | System       | 75034     | 73.3    |               |                    |
|         | Total        | 102353    | 100.0   |               |                    |

**getcare\_cnt Number of getting needed care sub-components**

|       |       | Frequency | Percent | Valid Percent | Cumulative Percent |
|-------|-------|-----------|---------|---------------|--------------------|
| Valid | 0     | 54335     | 53.1    | 53.1          | 53.1               |
|       | 1     | 30036     | 29.3    | 29.3          | 82.4               |
|       | 2     | 17982     | 17.6    | 17.6          | 100.0              |
|       | Total | 102353    | 100.0   | 100.0         |                    |

**getcare\_sum Total points across needed elements of getting phone or urgent care from PDN**

|         |        | Frequency | Percent | Valid Percent | Cumulative Percent |
|---------|--------|-----------|---------|---------------|--------------------|
| Valid   | 0      | 472       | .5      | 1.0           | 1.0                |
|         | 25     | 1566      | 1.5     | 3.3           | 4.2                |
|         | 50     | 292       | .3      | .6            | 4.9                |
|         | 75     | 4693      | 4.6     | 9.8           | 14.6               |
|         | 100    | 24205     | 23.6    | 50.4          | 65.0               |
|         | 125    | 647       | .6      | 1.3           | 66.4               |
|         | 150    | 1091      | 1.1     | 2.3           | 68.7               |
|         | 175    | 3204      | 3.1     | 6.7           | 75.3               |
|         | 200    | 11848     | 11.6    | 24.7          | 100.0              |
|         | Total  | 48018     | 46.9    | 100.0         |                    |
| Missing | System | 54335     | 53.1    |               |                    |
| Total   |        | 102353    | 100.0   |               |                    |

**getcare100 Average score for needed care sub-component of MEDICAL HOME**

|         |        | Frequency | Percent | Valid Percent | Cumulative Percent |
|---------|--------|-----------|---------|---------------|--------------------|
| Valid   | 0      | 472       | .5      | 1.0           | 1.0                |
|         | 13     | 132       | .1      | .3            | 1.3                |
|         | 25     | 1726      | 1.7     | 3.6           | 4.9                |
|         | 38     | 92        | .1      | .2            | 5.0                |
|         | 50     | 609       | .6      | 1.3           | 6.3                |
|         | 63     | 647       | .6      | 1.3           | 7.7                |
|         | 75     | 5692      | 5.6     | 11.9          | 19.5               |
|         | 88     | 3204      | 3.1     | 6.7           | 26.2               |
|         | 100    | 35444     | 34.6    | 73.8          | 100.0              |
|         | Total  | 48018     | 46.9    | 100.0         |                    |
| Missing | System | 54335     | 53.1    |               |                    |
| Total   |        | 102353    | 100.0   |               |                    |

**\*\*Getting Needed Care sub-component score (GETCARE\_2)**

**getcare\_2 Getting needed phone/urgent care from PDN sub-component for Med Home composite measure**

|         |   | Frequency | Percent | Valid Percent | Cumulative Percent |
|---------|---|-----------|---------|---------------|--------------------|
| Valid   | 0 Care or advice available less than usually/always | 3678      | 3.6     | 7.7           | 7.7                |
|         | 1 Usually/always get needed care or advice          | 44340     | 43.3    | 92.3          | 100.0              |
|         | Total   | 48018     | 46.9    | 100.0         |                    |
| Missing | System  | 54335     | 53.1    |               |                    |
| Total   |   | 102353    | 100.0   |               |                    |

**\*\*Interim variables Access to Specialist Care & Services sub-component**

**specialist Problems getting needed care from specialist dr**

|         |                     | Frequency | Percent | Valid Percent | Cumulative Percent |
|---------|---------------------|-----------|---------|---------------|--------------------|
| Valid   | 0 Big problem       | 966       | .9      | 4.5           | 4.5                |
|         | 25 Moderate problem | 1593      | 1.6     | 7.4           | 11.9               |
|         | 75 Small problem    | 2118      | 2.1     | 9.8           | 21.7               |
|         | 100 No problem      | 16870     | 16.5    | 78.3          | 100.0              |
|         | Total               | 21547     | 21.1    | 100.0         |                    |
| Missing | System              | 80806     | 78.9    |               |                    |
| Total   |                     | 102353    | 100.0   |               |                    |

**services Problems getting needed services or equip**

|         |                     | Frequency | Percent | Valid Percent | Cumulative Percent |
|---------|---------------------|-----------|---------|---------------|--------------------|
| Valid   | 0 Big problem       | 638       | .6      | 7.0           | 7.0                |
|         | 25 Moderate problem | 782       | .8      | 8.5           | 15.5               |
|         | 75 Small problem    | 1036      | 1.0     | 11.3          | 26.8               |
|         | 100 No problem      | 6705      | 6.6     | 73.2          | 100.0              |
|         | Total               | 9161      | 9.0     | 100.0         |                    |
| Missing | System              | 93192     | 91.0    |               |                    |
| Total   |                     | 102353    | 100.0   |               |                    |

**access\_cnt Number of needed access to care elements**

|       |       | Frequency | Percent | Valid Percent | Cumulative Percent |
|-------|-------|-----------|---------|---------------|--------------------|
| Valid | 0     | 77340     | 75.6    | 75.6          | 75.6               |
|       | 1     | 19318     | 18.9    | 18.9          | 94.4               |
|       | 2     | 5695      | 5.6     | 5.6           | 100.0              |
|       | Total | 102353    | 100.0   | 100.0         |                    |

**access\_sum Total points across accessing needed specialist care or services elements of MEDICAL HOME**

|         |        | Frequency | Percent | Valid Percent | Cumulative Percent |
|---------|--------|-----------|---------|---------------|--------------------|
| Valid   | 0      | 918       | .9      | 3.7           | 3.7                |
|         | 25     | 1456      | 1.4     | 5.8           | 9.5                |
|         | 50     | 146       | .1      | .6            | 10.1               |
|         | 75     | 1884      | 1.8     | 7.5           | 17.6               |
|         | 100    | 15920     | 15.6    | 63.6          | 81.3               |
|         | 125    | 453       | .4      | 1.8           | 83.1               |
|         | 150    | 208       | .2      | .8            | 83.9               |
|         | 175    | 680       | .7      | 2.7           | 86.6               |
|         | 200    | 3348      | 3.3     | 13.4          | 100.0              |
|         | Total  | 25013     | 24.4    | 100.0         |                    |
| Missing | System | 77340     | 75.6    |               |                    |
| Total   |        | 102353    | 100.0   |               |                    |

**access100 Average score for access to needed specialist care/services sub-component of MEDICAL HOME**

|         |        | Frequency | Percent | Valid Percent | Cumulative Percent |
|---------|--------|-----------|---------|---------------|--------------------|
| Valid   | 0      | 918       | .9      | 3.7           | 3.7                |
|         | 13     | 127       | .1      | .5            | 4.2                |
|         | 25     | 1475      | 1.4     | 5.9           | 10.1               |
|         | 38     | 109       | .1      | .4            | 10.5               |
|         | 50     | 457       | .4      | 1.8           | 12.3               |
|         | 63     | 453       | .4      | 1.8           | 14.1               |
|         | 75     | 1983      | 1.9     | 7.9           | 22.1               |
|         | 88     | 680       | .7      | 2.7           | 24.8               |
|         | 100    | 18811     | 18.4    | 75.2          | 100.0              |
|         | Total  | 25013     | 24.4    | 100.0         |                    |
| Missing | System | 77340     | 75.6    |               |                    |
| Total   |        | 102353    | 100.0   |               |                    |

**\*\*Access to Specialist Care & Services sub-component score (ACCESS\_2)**

**access\_2 Access to needed specialist care/services sub-component for Med Home composite measure**

|         |                                       | Frequency | Percent | Valid Percent | Cumulative Percent |
|---------|---------------------------------------|-----------|---------|---------------|--------------------|
| Valid   | 0 Significant problems accessing care | 3539      | 3.5     | 14.1          | 14.1               |
|         | 1 Few or no problems accessing care   | 21474     | 21.0    | 85.9          | 100.0              |
|         | Total                                 | 25013     | 24.4    | 100.0         |                    |
| Missing | System                                | 77340     | 75.6    |               |                    |
| Total   |                                       | 102353    | 100.0   |               |                    |

**Coordinated Care Component**

**\*\*Interim variables Follow Up with Family sub-component**

**fu\_specialist How often PDN follows up w/ family after specialist visit**

|         |              | Frequency | Percent | Valid Percent | Cumulative Percent |
|---------|--------------|-----------|---------|---------------|--------------------|
| Valid   | 0 Never      | 4349      | 4.2     | 20.5          | 20.5               |
|         | 25 Sometimes | 3646      | 3.6     | 17.2          | 37.8               |
|         | 75 Usually   | 3526      | 3.4     | 16.7          | 54.4               |
|         | 100 Always   | 9652      | 9.4     | 45.6          | 100.0              |
|         | Total        | 21173     | 20.7    | 100.0         |                    |
| Missing | System       | 81180     | 79.3    |               |                    |
| Total   |              | 102353    | 100.0   |               |                    |

**fu\_serve How often PDN follows up w/ family after special services/equip**

|         |              | Frequency | Percent | Valid Percent | Cumulative Percent |
|---------|--------------|-----------|---------|---------------|--------------------|
| Valid   | 0 Never      | 2247      | 2.2     | 24.8          | 24.8               |
|         | 25 Sometimes | 1857      | 1.8     | 20.5          | 45.3               |
|         | 75 Usually   | 1306      | 1.3     | 14.4          | 59.8               |
|         | 100 Always   | 3643      | 3.6     | 40.2          | 100.0              |
|         | Total        | 9053      | 8.8     | 100.0         |                    |
| Missing | System       | 93300     | 91.2    |               |                    |
| Total   |              | 102353    | 100.0   |               |                    |

**coor\_cnt Number of coor care follow up elements needed**

|       |       | Frequency | Percent | Valid Percent | Cumulative Percent |
|-------|-------|-----------|---------|---------------|--------------------|
| Valid | 0     | 77722     | 75.9    | 75.9          | 75.9               |
|       | 1     | 19036     | 18.6    | 18.6          | 94.5               |
|       | 2     | 5595      | 5.5     | 5.5           | 100.0              |
|       | Total | 102353    | 100.0   | 100.0         |                    |

**coor\_sum Total points on needed follow up care elements of MEDICAL HOME**

|         |        | Frequency | Percent | Valid Percent | Cumulative Percent |
|---------|--------|-----------|---------|---------------|--------------------|
| Valid   | 0      | 4969      | 4.9     | 20.2          | 20.2               |
|         | 25     | 3698      | 3.6     | 15.0          | 35.2               |
|         | 50     | 547       | .5      | 2.2           | 37.4               |
|         | 75     | 3130      | 3.1     | 12.7          | 50.1               |
|         | 100    | 9208      | 9.0     | 37.4          | 87.5               |
|         | 125    | 369       | .4      | 1.5           | 89.0               |
|         | 150    | 437       | .4      | 1.8           | 90.8               |
|         | 175    | 486       | .5      | 2.0           | 92.7               |
|         | 200    | 1787      | 1.7     | 7.3           | 100.0              |
|         | Total  | 24631     | 24.1    | 100.0         |                    |
| Missing | System | 77722     | 75.9    |               |                    |
| Total   |        | 102353    | 100.0   |               |                    |

**coor100 Average score on follow up care from PDN coor care sub-component of MEDICAL HOME**

|         |        | Frequency | Percent | Valid Percent | Cumulative Percent |
|---------|--------|-----------|---------|---------------|--------------------|
| Valid   | 0      | 4969      | 4.9     | 20.2          | 20.2               |
|         | 13     | 456       | .4      | 1.9           | 22.0               |
|         | 25     | 3789      | 3.7     | 15.4          | 37.4               |
|         | 38     | 155       | .2      | .6            | 38.0               |
|         | 50     | 679       | .7      | 2.8           | 40.8               |
|         | 63     | 369       | .4      | 1.5           | 42.3               |
|         | 75     | 3412      | 3.3     | 13.9          | 56.1               |
|         | 88     | 486       | .5      | 2.0           | 58.1               |
|         | 100    | 10316     | 10.1    | 41.9          | 100.0              |
|         | Total  | 24631     | 24.1    | 100.0         |                    |
| Missing | System | 77722     | 75.9    |               |                    |
| Total   |        | 102353    | 100.0   |               |                    |

**\*\*Follow Up with Family sub-component score (COOR\_2)**

**coor\_2 Coor care sub-component for Med Home composite measure**

|         |   | Frequency | Percent | Valid Percent | Cumulative Percent |
|---------|---|-----------|---------|---------------|--------------------|
| Valid   | 0 PDN follows up less than usually/always | 10417     | 10.2    | 42.3          | 42.3               |
|         | 1 PDN usually/always follows up           | 14214     | 13.9    | 57.7          | 100.0              |
|         | Total                                     | 24631     | 24.1    | 100.0         |                    |
| Missing | System                                    | 77722     | 75.9    |               |                    |
| Total   |   | 102353    | 100.0   |               |                    |

**Medical Home Composite Measure**

**\*\*Interim variables for Medical Home Composite Measure**

**mh\_cnt Number of sub-components of Medical Home needed**

|       |   | Frequency | Percent | Valid Percent | Cumulative Percent |
|-------|---|-----------|---------|---------------|--------------------|
| Valid | 0 | 14941     | 14.6    | 14.6          | 14.6               |
|       | 1 | 32130     | 31.4    | 31.4          | 46.0               |
|       | 2 | 30402     | 29.7    | 29.7          | 75.7               |
|       | 3 | 7405      | 7.2     | 7.2           | 82.9               |
|       | 4 | 17475     | 17.1    | 17.1          | 100.0              |
| Total |   | 102353    | 100.0   | 100.0         |                    |

**mh\_cnt2 Number needed Medical Home sub-components with score of 75pt or above**

|       |   | Frequency | Percent | Valid Percent | Cumulative Percent |
|-------|---|-----------|---------|---------------|--------------------|
| Valid | 0 | 24383     | 23.8    | 23.8          | 23.8               |
|       | 1 | 30895     | 30.2    | 30.2          | 54.0               |
|       | 2 | 29831     | 29.1    | 29.1          | 83.2               |
|       | 3 | 8878      | 8.7     | 8.7           | 91.8               |
|       | 4 | 8366      | 8.2     | 8.2           | 100.0              |
| Total |   | 102353    | 100.0   | 100.0         |                    |

**mh2\_score % of needed MEDICAL HOME sub-components with score 75pt or above**

|         |        | Frequency | Percent | Valid Percent | Cumulative Percent |
|---------|--------|-----------|---------|---------------|--------------------|
| Valid   | 0      | 9442      | 9.2     | 10.8          | 10.8               |
|         | 25     | 720       | .7      | .8            | 11.6               |
|         | 33     | 1262      | 1.2     | 1.4           | 13.1               |
|         | 50     | 7115      | 7.0     | 8.1           | 21.2               |
|         | 67     | 3038      | 3.0     | 3.5           | 24.7               |
|         | 75     | 5970      | 5.8     | 6.8           | 31.5               |
|         | 100    | 59865     | 58.5    | 68.5          | 100.0              |
|         | Total  | 87412     | 85.4    | 100.0         |                    |
| Missing | System | 14941     | 14.6    |               |                    |
| Total   |        | 102353    | 100.0   |               |                    |

**mh\_yn % meet MED HOME threshold of 75pts or above on EVERY needed sub-components - prev care not included**

|         |  | Frequency | Percent | Valid Percent | Cumulative Percent |
|---------|--|-----------|---------|---------------|--------------------|
| Valid   | 0 No PDN or PDN & less than 75pts on 1 or more needed sub-components | 42195     | 41.2    | 41.3          | 41.3               |
|         | 1 PDN & 75 pts or above on EVERY needed sub-component                | 59865     | 58.5    | 58.7          | 100.0              |
|         | Total  | 102060    | 99.7    | 100.0         |                    |
| Missing | System   | 293       | .3      |               |                    |
| Total   |  | 102353    | 100.0   |               |                    |

**\*\*Medical Home Composite Measure score (medhome\_comp = ind4\_8)**

**medhome\_comp How many children/youth (ages 0-17) receive health care that meets the AAP definition of medical home?**

|         |  | Frequency | Percent | Valid Percent | Cumulative Percent |
|---------|--|-----------|---------|---------------|--------------------|
| Valid   | 0 Care DOES NOT meet medical home definition | 52105     | 50.9    | 51.5          | 51.5               |
|         | 1 Care MEETS medical home definition         | 49089     | 48.0    | 48.5          | 100.0              |
|         | Total  | 101194    | 98.9    | 100.0         |                    |
| Missing | System                                       | 1159      | 1.1     |               |                    |
| Total   |  | 102353    | 100.0   |               |                    |